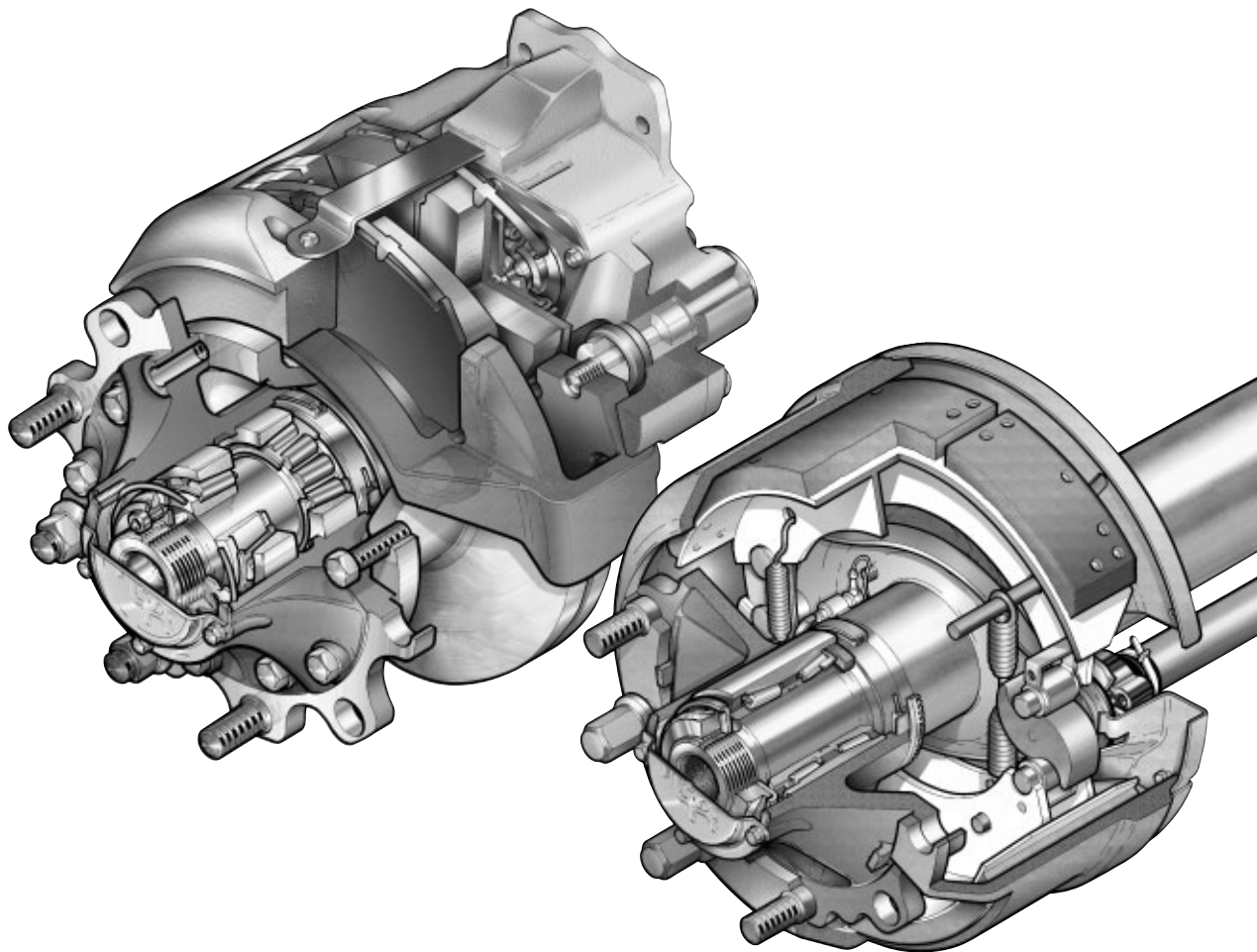




**MERITOR™**

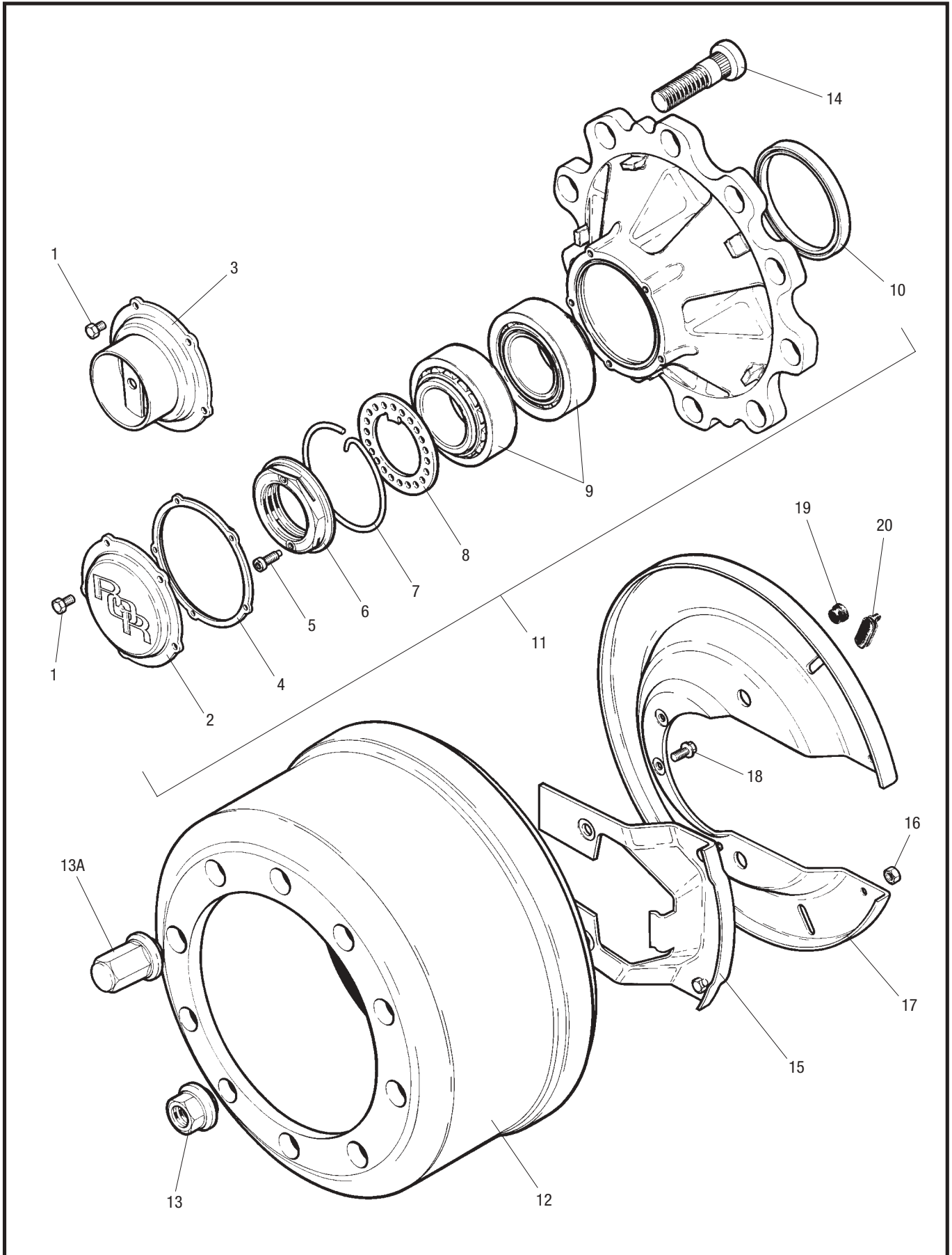
ROR Trailer Products  
Axle & Brake Parts List  
LM and LC Series Axles  
including disc and drum brake variants



**ArvinMeritor™**

# LM & LC Parts List

## LM/LC Hub Assembly



# LM & LC Parts List

## LM/LC Hub Assembly



**MERITOR™**

| Item | Description  | Part Number     |
|------|--|-----------------|
| 1    | Screw, hub cap   | 99543001        |
| 2    | Hub cap  | 21224673        |
| 3    | Hub cap – hubodometer  | 21224904        |
| 4    | Gasket, hub cap  | 21224759        |
| 5    | Screw, pinch nut   | 21224864        |
| 6    | Pinch nut  | 21224762        |
| 7    | Retaining clip   | 21224865        |
| 8    | Retaining washer   | 21224669        |
| 9    | Bearings   | 99041075        |
| 10   | Oil seal   | 21200321A       |
| 11   | LM Hub assembly*   | 14224748        |
| 11A  | LC Hub assembly (not shown)**  | —               |
| 12   | Brake drum   | 21220183V       |
| 13   | Wheel nut  | see table below |
| 14   | Wheel bolt, steel wheel  | 21220132        |
| 14   | Wheel bolt, aluminium wheel  | 21220969        |
| 14   | Wheel bolt, universal steel/aluminium, coated, (use with dacromet wheel nut) | 21226339        |
| 15   | Filler plate – for axles manufactured before April 2001                      | 15224518        |
| 15   | Filler plate – for axles manufactured after April 2001                       | 15225842        |
| 16   | Nut, filler plate  | 99544000        |
| 17   | Dust cover   | 21224522        |
| 18   | Screw, dust cover  | 99546002        |
| 19   | Plug, blanking   | 21211385        |
| 20   | Plug, inspection   | 21220719        |
| 21   | 400g Cartridge MERITOR hub grease (not shown)                                | 99538007        |
| 22   | 100g Tube Optimol Optimoly White Paste T (not shown)                         | 99538009        |

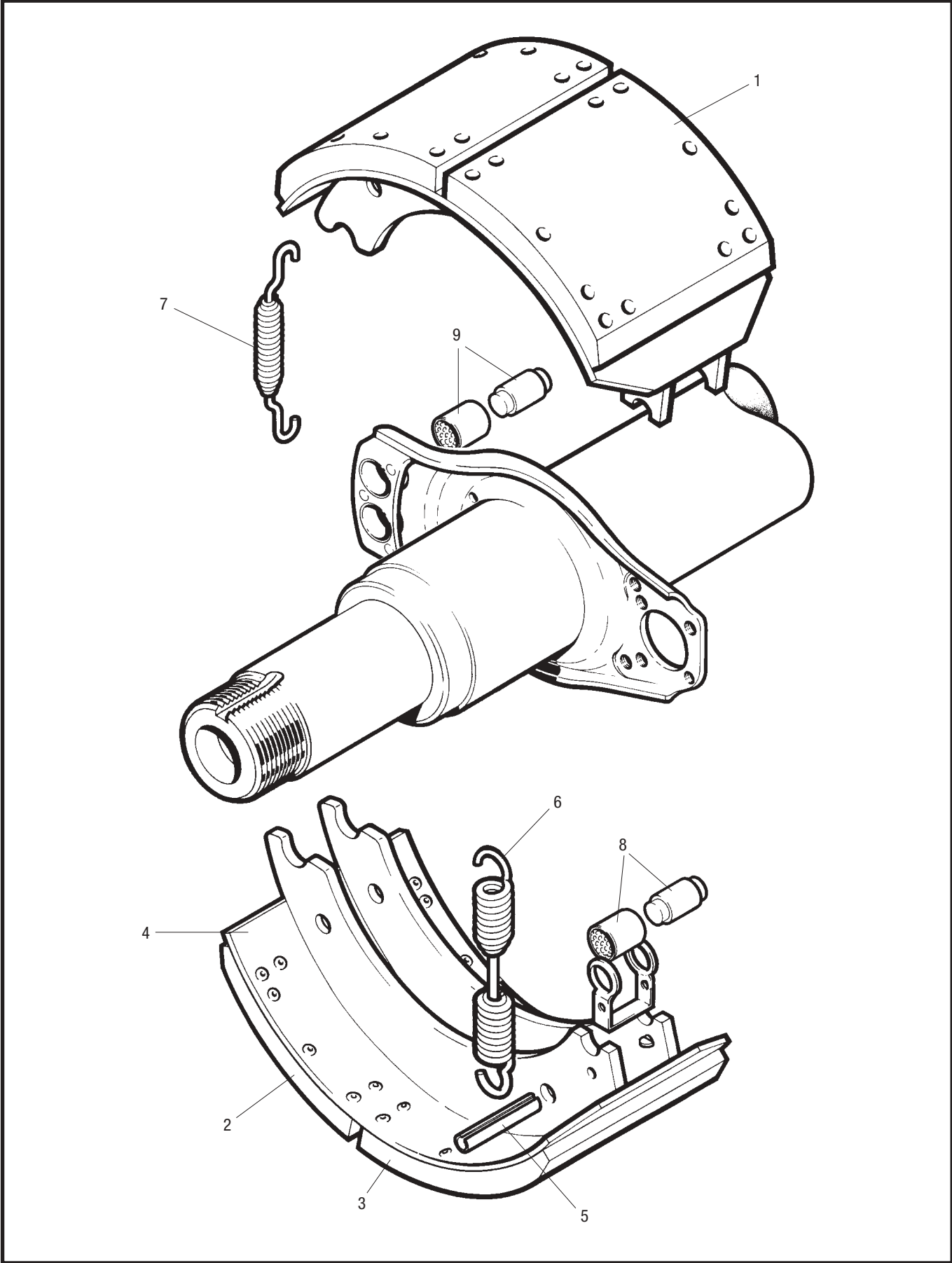
\*Does not include items 5 or 6.

\*\*see page 13 for LC hub parts

| WHEEL NUTS 32mm ACROSS FLATS |                           |               |                    |
|------------------------------|---------------------------|---------------|--------------------|
| NEW PART NUMBER              | REPLACES EXISTING NUMBERS | TYPE          | FINISH COATING     |
| <b>21226395</b>              | 21218643 / 21218644       | STANDARD OPEN | PHOSPHATE & OIL    |
| <b>21226396</b>              | 21225528 / 21225529       | STANDARD OPEN | DACROMET 500 & OIL |
| <b>21226397</b>              | 21218645 / 21218621       | CLOSED END    | PHOSPHATE & OIL    |
| <b>21226484</b>              | N/A                       | CLOSED END    | DACROMET 500 & OIL |

# LM & LC Parts List

## LM/LC Brake Assembly



# LM & LC Parts List

## LM/LC Brake Assembly



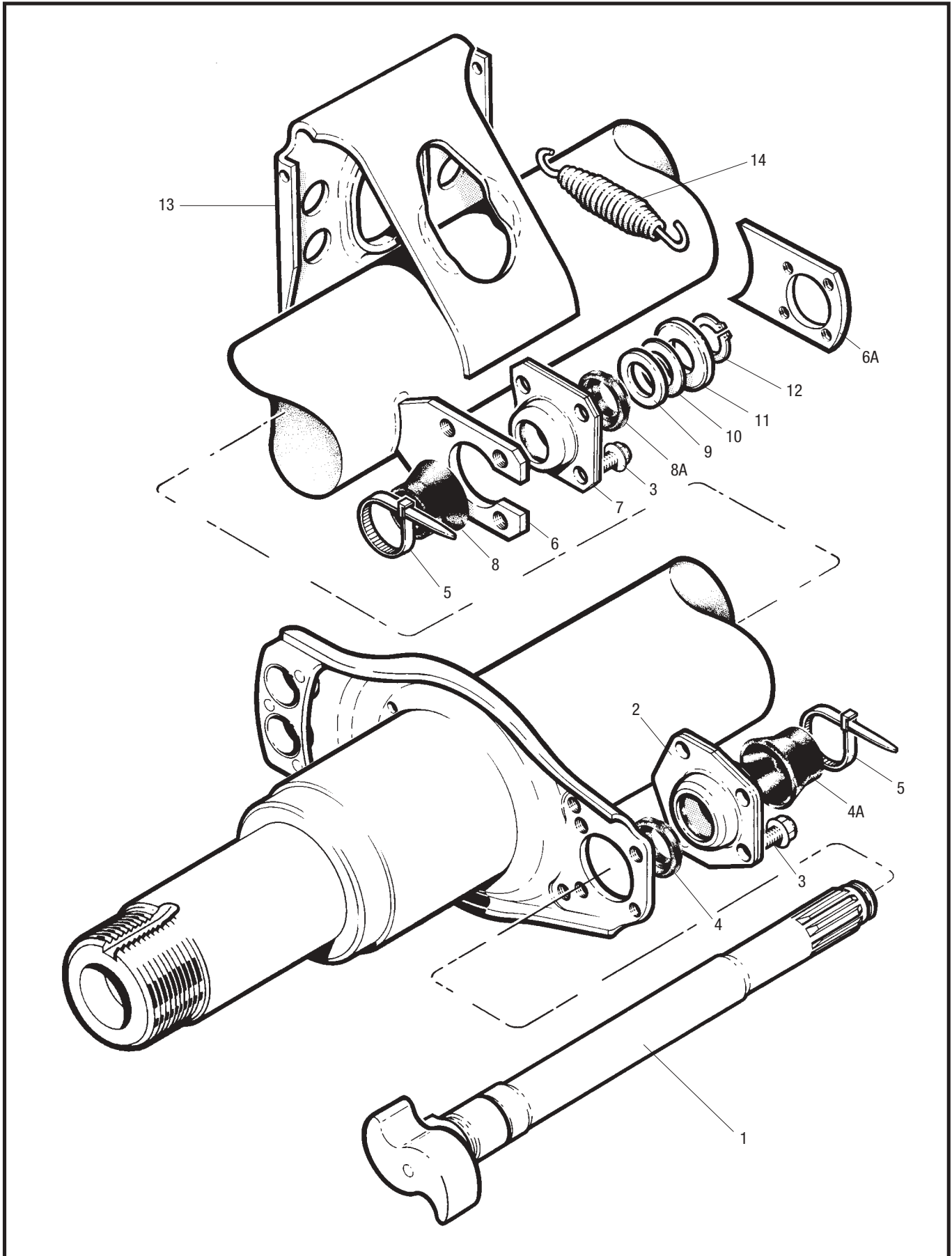
| Item | Description                                     | Part Number                                     |
|------|---|---|
| 1    | Brake shoe lined assembly                       | 15224952R                                       |
| 2    | Brake lining, anchor end                        | } Brake lining kit (including rivets)<br>BLKQ+R |
| 3    | Brake lining, cam end                           |   |
| 4    | Brake shoe assembly, welded                     | 15224724S                                       |
| 5    | Roll pin  | 21220171  |
| 6    | Return spring                                   | 21221224  |
| 7    | Retaining spring                                | 21205194  |
| 8    | Cam roller assembly                             | 15226262  |
| 9    | Anchor pin and bush assembly                    | 15226632  |
| *10  | 25g Sachet MERITOR brake grease (not shown)     | 99226786  |
| *11  | 400g Cartridge MERITOR brake grease (not shown) | 99226787  |

\*Must be used with items 8 and 9.

NB. Items 8 and 9 must be used as a matched set, individual components are not interchangeable with old style parts.

# LM & LC Parts List

LM/LC Camshaft Assembly – up to 31st March 2001



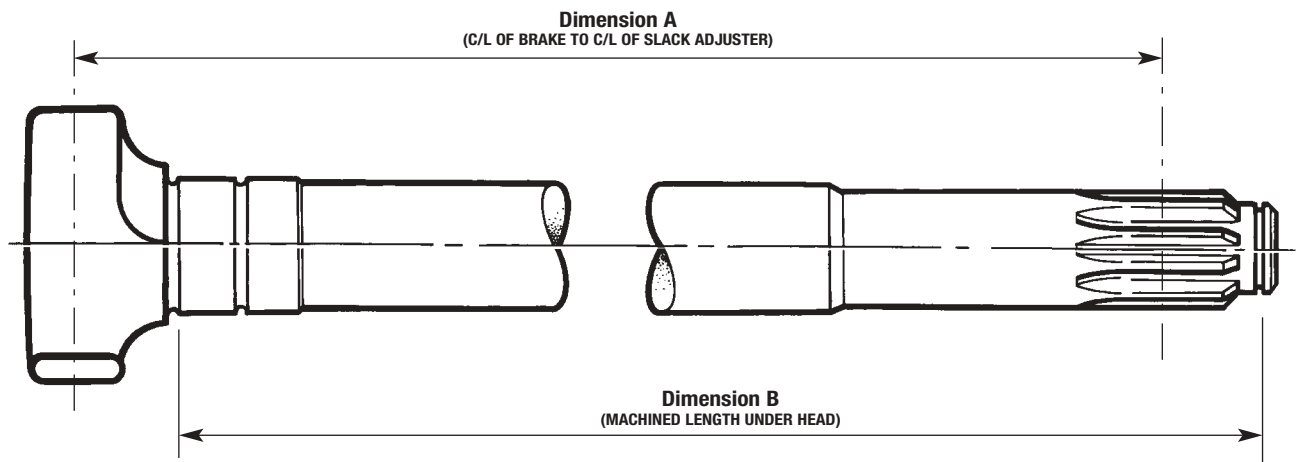
# LM & LC Parts List

LM/LC Camshaft Assembly – up to 31st March 2001



| Item | Description                                   | Part Number     |
|------|---|-----------------|
| 1    | Camshaft LH/RH                                | See table below |
| 2    | Cam head bearing assembly                     | 15224821        |
| 3    | Screw, bearing                                | 99546002        |
| 4    | Inner boot, cam end                           | 21224729        |
| 4A   | Outer boot, cam end                           | 21224730        |
| 5    | Tie wrap                                      | 21221065        |
| 6    | Camshaft bracket                              | 21220982        |
| 6A   | Camshaft bracket (axles built after Sept '99) | 21020300        |
| 7    | Spline end bearing assembly                   | 15213430        |
| 8    | Inner boot, spline end                        | 21204849        |
| 8A   | Outer boot, spline end                        | 21205667        |
| 9    | Washer, spacing, thick                        | 21006627        |
| 10   | Washer, spacing, thin                         | 21006662        |
| 11   | Retaining washer                              | 21219862        |
| 12   | Circlip                                       | 99507030        |
| 13   | Air chamber bracket                           | 21221004        |
| 14   | Assister spring                               | 21210215        |
| *15  | 25g Sachet MERITOR grease (not shown)         | 99226786        |
| *15  | 400g Cartridge MERITOR grease (not shown)     | 99226787        |

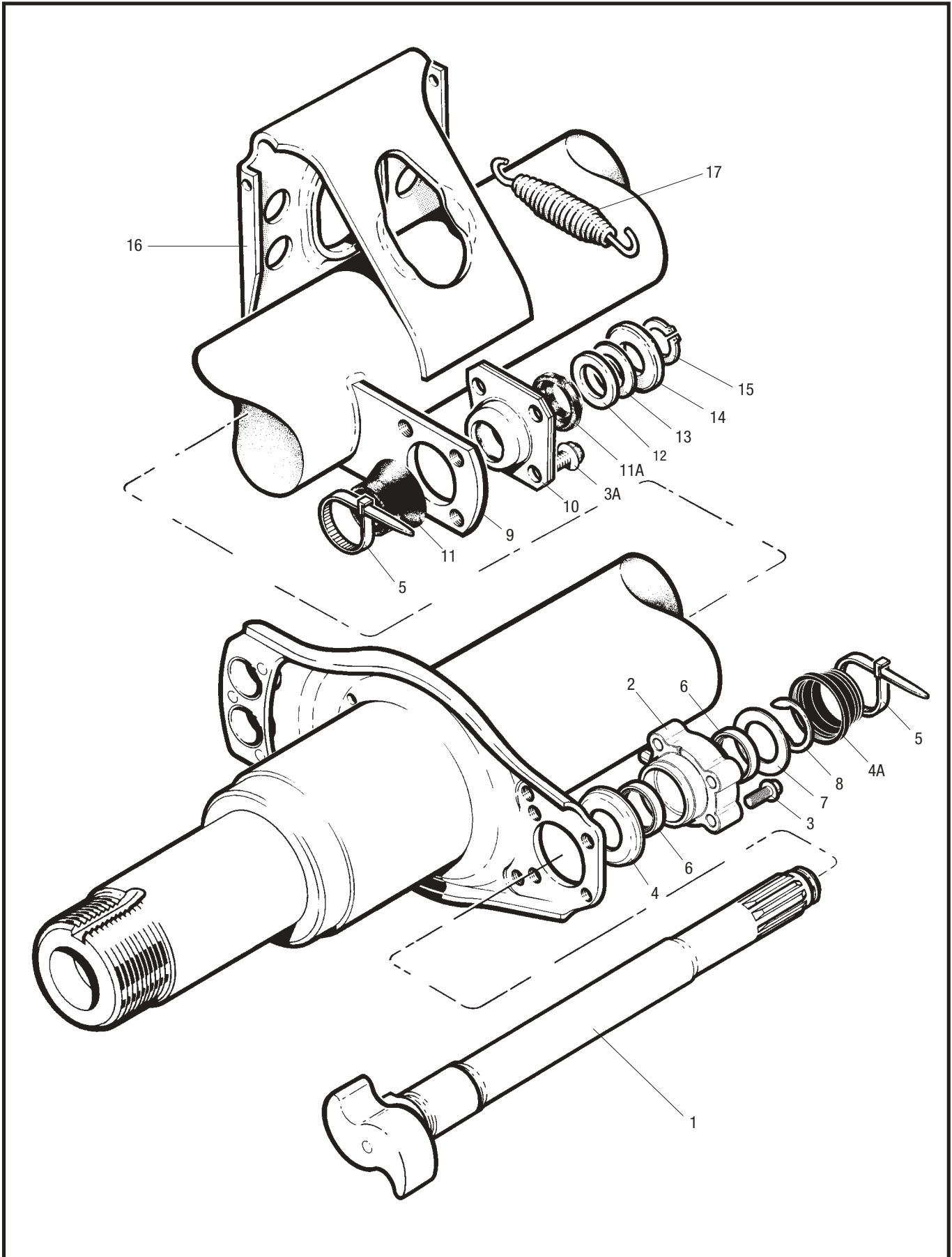
NB. Item 15 must be used on items 2 & 7.



| Dimension 'A' | Dimension 'B' | Part Number |           |
|---------------|---------------|-------------|-----------|
|               |               | Right Hand  | Left Hand |
| 229.9         | 232.4         | 21224857    | 21224858  |
| 253.5         | 258.0         | 21224855    | 21224856  |
| 412.2         | 416.7         | 21224849    | 21224850  |
| 475.7         | 480.2         | 21224847    | 21224848  |
| 521.0         | 525.5         | 21224793    | 21224794  |
| 544.5         | 549.0         | 21224853    | 21224854  |
| 564.0         | 568.5         | 21224851    | 21224852  |
| 583.0         | 587.5         | 21224795    | 21224796  |
| 605.5         | 610.0         | 21224845    | 21224846  |
| 622.5         | 627.0         | 21224843    | 21224844  |
| 632.5         | 637.0         | 21224841    | 21224842  |
| 658.8         | 663.3         | 21224859    | 21224860  |

# LM & LC Parts List

LM/LC Camshaft Assembly – from 1st April 2001





# LM & LC Parts List

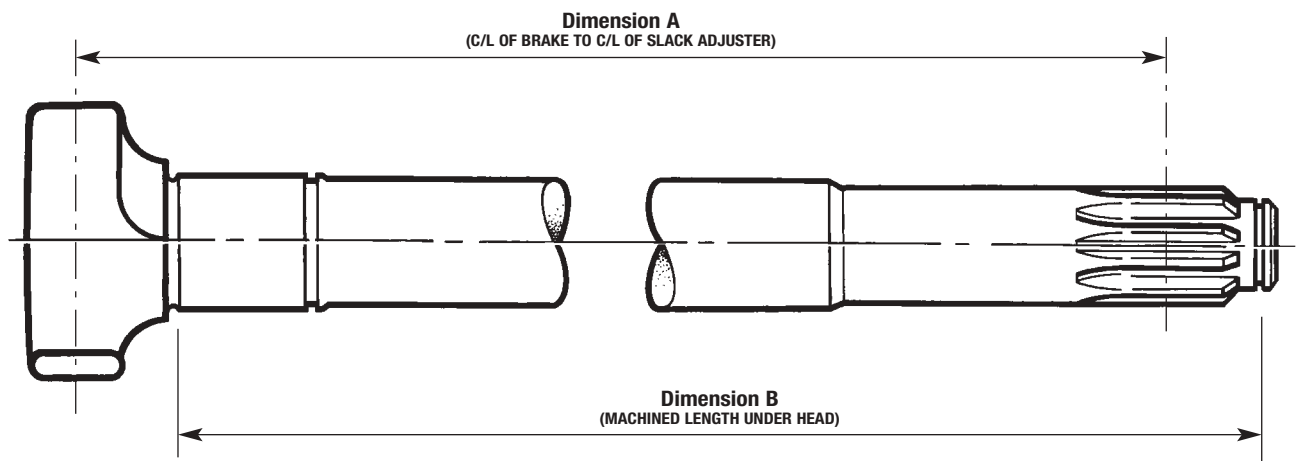
LM/LC Camshaft Assembly – from 1st April 2001



| Item | Description                               | Part Number     |
|------|---|-----------------|
| 1    | Camshaft LH/RH                            | See table below |
| 2    | Cam head bearing assembly**               | A23105Q1213     |
| 3    | Screw, bearing, cam end**                 | 99546000        |
| 3A   | Screw, bearing, spline end**              | 99546002        |
| 4    | Washer seal**                             | 1229K4795       |
| 4A   | Boot, cam end**                           | 2260K1155       |
| 5    | Tie wrap**                                | 21221065        |
| 6    | Lip seal (part of item 2)                 | -               |
| 7    | Washer**                                  | 1229S4101       |
| 8    | Snap ring**                               | 1229T4102       |
| 9    | Camshaft bracket                          | 21020300        |
| 10   | Spline end bearing assembly**             | 15213430        |
| 11   | Inner boot, spline end**                  | 21204849        |
| 11A  | Outer boot, spline end**                  | 21205667        |
| 12   | Washer, spacing, thick**                  | 21006627        |
| 13   | Washer, spacing, thin**                   | 21006662        |
| 14   | Retaining washer**                        | 21219862        |
| 15   | Circlip**                                 | 99507030        |
| 16   | Air chamber bracket                       | 21221004        |
| 17   | Assister spring                           | 21210215        |
| *18  | 25g Sachet MERITOR grease (not shown)     | 99226786        |
| *18  | 400g Cartridge MERITOR grease (not shown) | 99226787        |

\*NB. Item 18 must be used on items 2 & 10.

\*\* All contained in service kit AXL 140

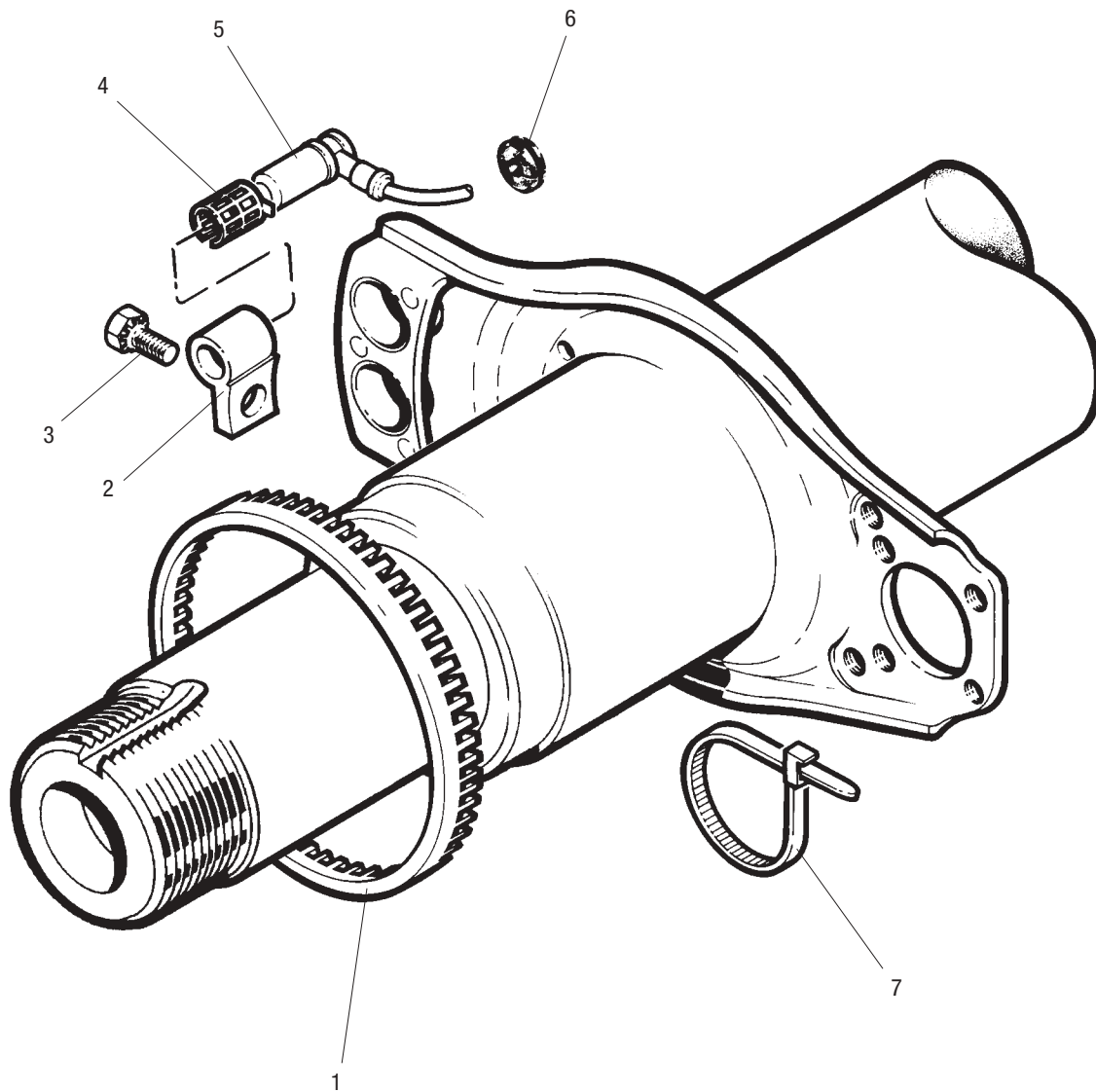


| Dimension 'A' | Dimension 'B' | Part Number |           |
|---------------|---------------|-------------|-----------|
|               |               | Right Hand  | Left Hand |
| 412.2         | 416.7         | 21227086    | 21227087  |
| 521.0         | 525.5         | 21227084    | 21227085  |
| 544.5         | 549.0         | 21227082    | 21227083  |
| 583.0         | 587.5         | 21227080    | 21227081  |
| 605.5         | 610.0         | 21227078    | 21227079  |
| 622.5         | 627.0         | 21227076    | 21227077  |
| 632.5         | 637.0         | 21227074    | 21227075  |
| 188.5*        | 193.00*       | 21225020*   | 21225021* |

\*Steering axle

# LM & LC Parts List

## LM/LC ABS Assembly



# LM & LC Parts List

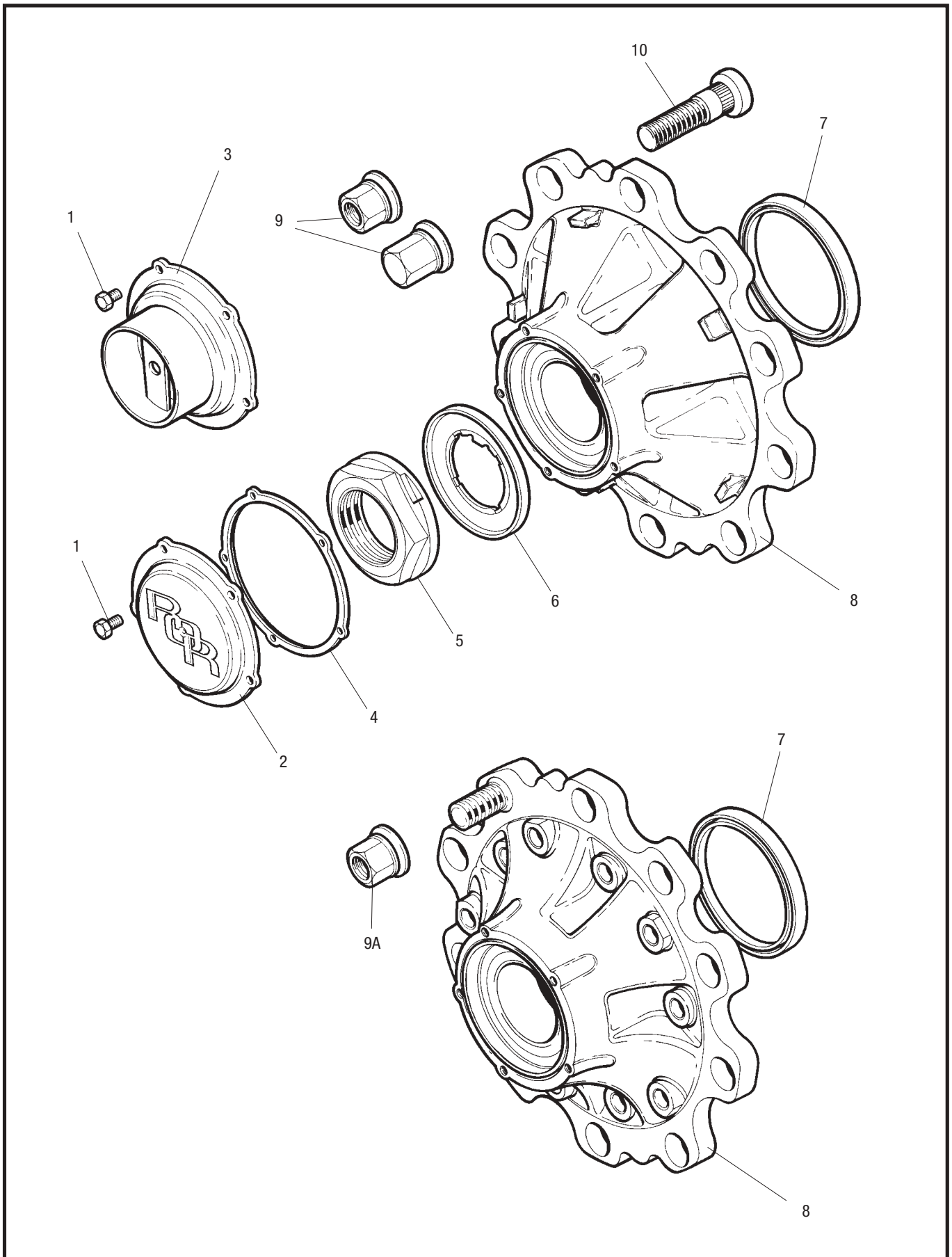
## LM/LC ABS Assembly



| <b>Item</b> | <b>Description</b>                 | <b>Part Number</b> |
|-------------|------------------------------------|--------------------|
| 1           | Pole wheel                         | 21213316           |
| 2           | Sensor block                       | 22224705           |
| 3           | Screw, sensor block                | 99541002           |
| 4           | Spring clip                        | 21213036           |
| 5           | Sensor                             | 21213034           |
| 6           | Strain relief bush                 | 21222319           |
| 7           | Cable tie                          | 21221065           |
| 8           | Grease for sensor bush (not shown) | 99226786           |

# LM & LC Parts List

## LC Hub Assembly



# LM & LC Parts List

## LC Hub Assembly

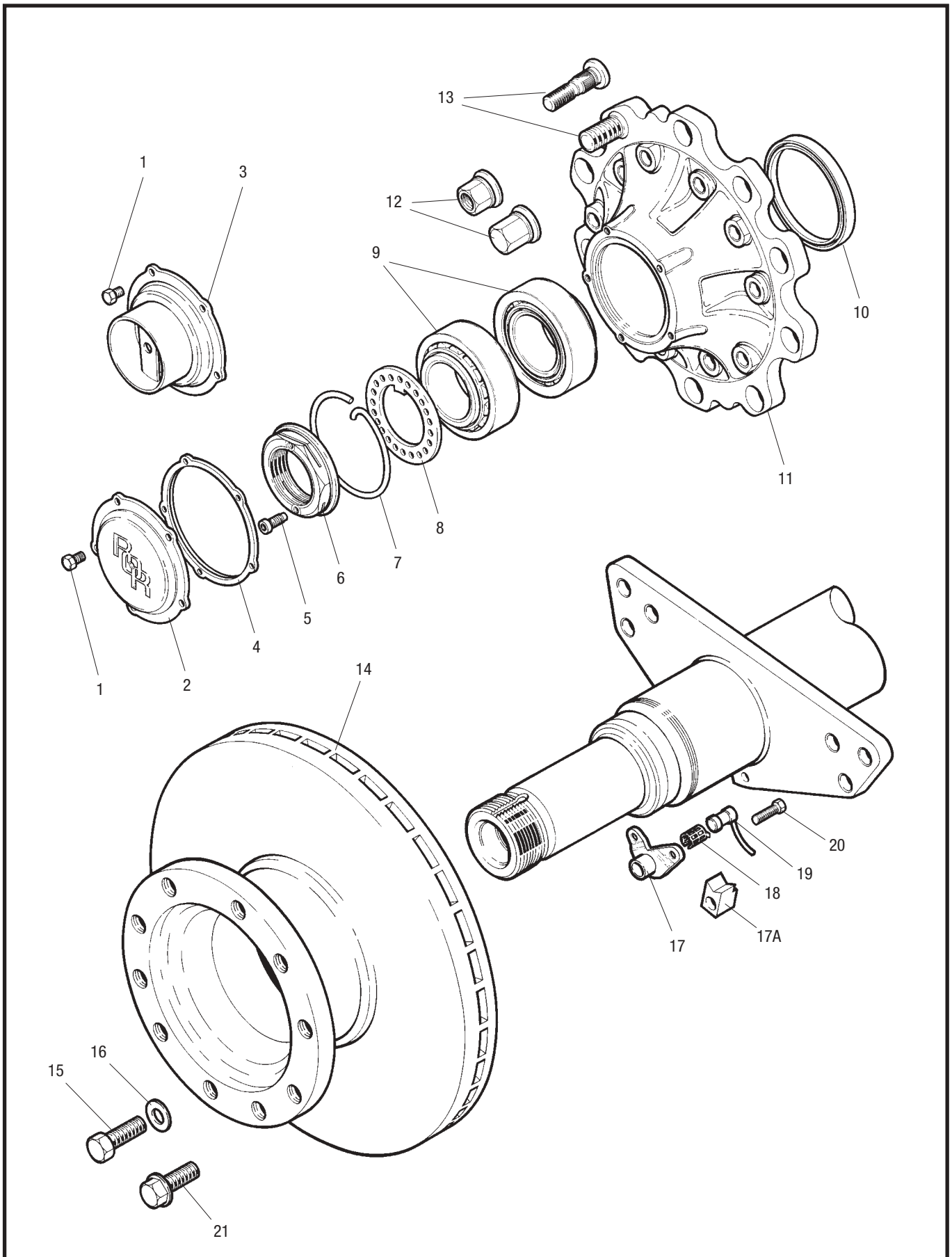


| Item | Description  | Part Number     |
|------|--|-----------------|
| 1    | Screw, hub cap   | 99543001        |
| 2    | Hub cap  | 21224673        |
| 3    | Hub cap – hubodometer  | 21224904        |
| 4    | Gasket, hub cap  | 21224759        |
| 5    | Axle end nut   | 21225405        |
| 6    | Stake washer assembly  | 21225514        |
| 7    | Auxiliary oil seal   | 21200321A       |
| 8    | LC Hub assembly, drum brake  | 14225290        |
| 8    | LC Hub assembly, disc brake  | 14225494        |
| 9    | Wheel nut, drum brake  | see table below |
| 9A   | Wheel nut, disc brake  | 21226396        |
| 10   | Wheel bolt, steel wheel  | 21225086        |
| 10   | Wheel bolt, aluminium wheel  | 21220132        |
| 10   | Wheel bolt, universal steel/aluminium wheel, coated, (use with dacromat wheel nut) | 21226340        |

| WHEEL NUTS 32mm ACROSS FLATS |                           |               |                    |
|------------------------------|---------------------------|---------------|--------------------|
| NEW PART NUMBER              | REPLACES EXISTING NUMBERS | TYPE          | FINISH COATING     |
| <b>21226395</b>              | 21218643 / 21218644       | STANDARD OPEN | PHOSPHATE & OIL    |
| <b>21226396</b>              | 21225528 / 21225529       | STANDARD OPEN | DACROMET 500 & OIL |
| <b>21226397</b>              | 21218645 / 21218621       | CLOSED END    | PHOSPHATE & OIL    |
| <b>21226484</b>              | N/A                       | CLOSED END    | DACROMET 500 & OIL |

# LM & LC Parts List

## LM DX195 Hub, Disc and ABS Assembly



# LM & LC Parts List

## LM DX195 Hub, Disc and ABS Assembly



**MERITOR™**

| Item | Description  | Part Number     |
|------|--|-----------------|
| 1    | Screw, hub cap   | 99543001        |
| 2    | Hub cap  | 21224673        |
| 3    | Hub cap – hubodometer  | 21224904        |
| 4    | Gasket, hub cap  | 21224759        |
| 5    | Screw, pinch nut   | 21224864        |
| 6    | Pinch nut  | 21224762        |
| 7    | Retaining clip   | 21224865        |
| 8    | Retaining washer   | 21224669        |
| 9    | Bearings   | 99041075        |
| 10   | Oil seal   | 21200321A       |
| 11   | LM Hub assembly*   | 14225425        |
| 11A  | LC Hub assembly (not shown)**  | –               |
| 12   | Wheel nut  | see table below |
| 13   | Wheel bolt, steel wheel  | 21225086        |
| 13   | Wheel bolt, aluminium wheel  | 21220132        |
| 13   | Wheel bolt, universal steel/aluminium wheel, coated, (use with dacromat wheel nut) | 21226340        |
| 14   | Brake disc   | 21227349        |
| 15   | M16 x 65 Brake disc mounting bolt  | 21225100        |
| 16   | Hardened washer  | 21224978        |
| 17   | Sensor bracket (from June 2000)  | 21226429        |
| 17A  | Sensor block (pre June 2000)   | 21213035        |
| 18   | Spring clip  | 21213036        |
| 19   | Sensor   | 21213034        |
| 20   | Screw, sensor bracket (from June 2000)   | 99543002        |
| 21   | M16 x 60 Brake disc flanged mounting bolt – replaces items 15 & 16 from July 2001  | 21227263        |

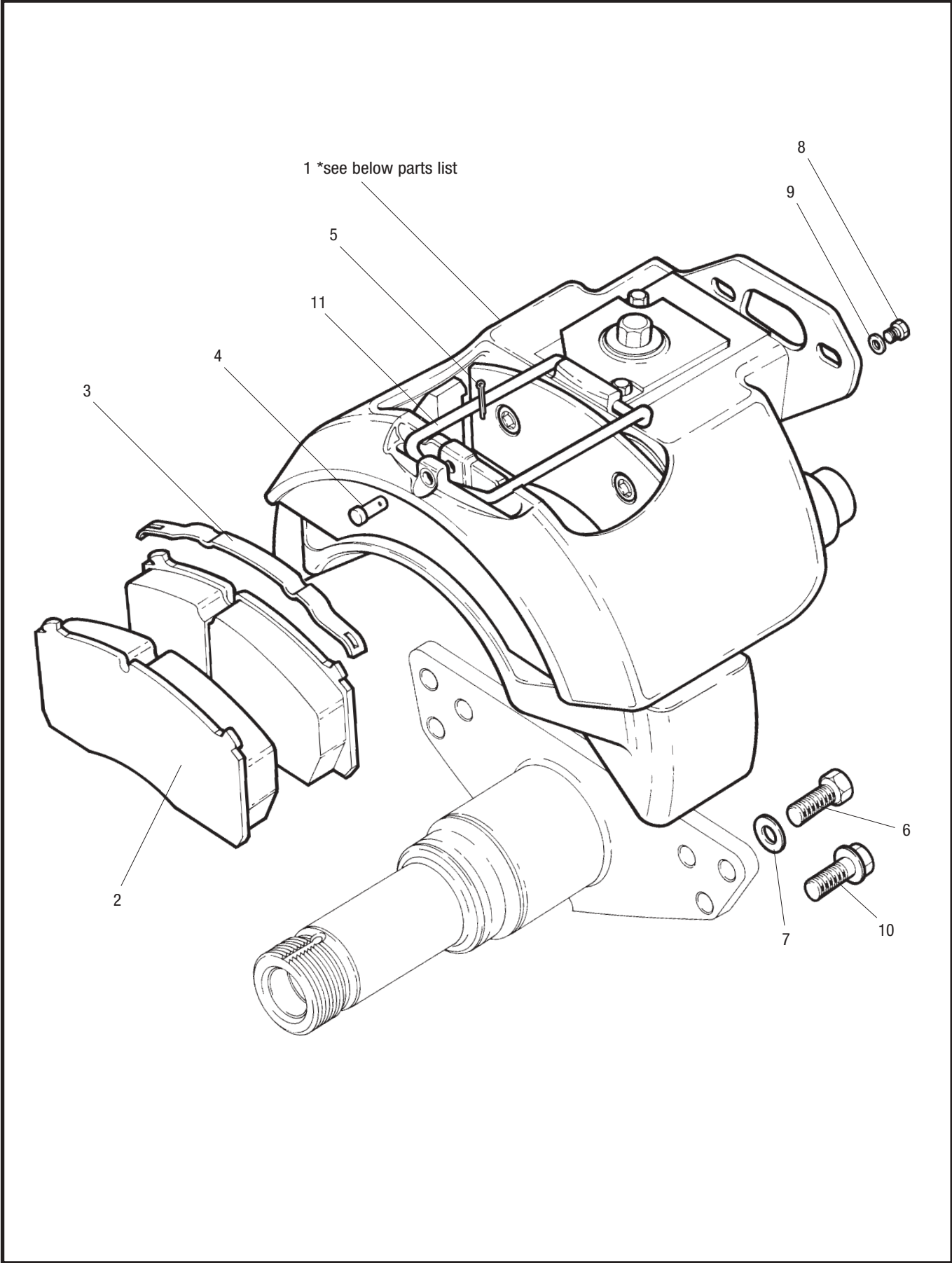
\*Does not include items 5 or 6.

\*\*see page 13 for LC hub parts

| WHEEL NUTS 32mm ACROSS FLATS |                           |               |                    |
|------------------------------|---------------------------|---------------|--------------------|
| NEW PART NUMBER              | REPLACES EXISTING NUMBERS | TYPE          | FINISH COATING     |
| <b>21226395</b>              | 21218643 / 21218644       | STANDARD OPEN | PHOSPHATE & OIL    |
| <b>21226396</b>              | 21225528 / 21225529       | STANDARD OPEN | DACROMET 500 & OIL |
| <b>21226397</b>              | 21218645 / 21218621       | CLOSED END    | PHOSPHATE & OIL    |
| <b>21226484</b>              | N/A                       | CLOSED END    | DACROMET 500 & OIL |

# LM & LC Parts List

## DX195 Brake Assembly





# LM & LC Parts List

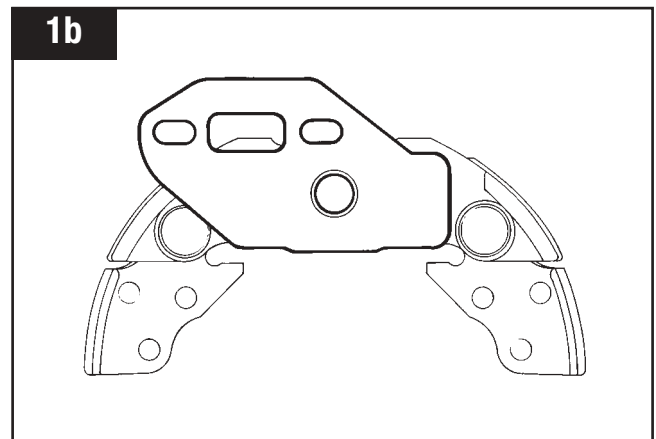
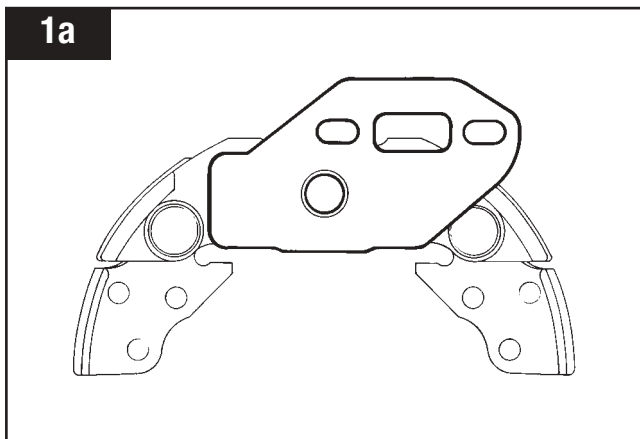
## DX195 Brake Assembly



| Item | Description  | Part Number |
|------|--|-------------|
| 1a   | Brake assembly DX195 25, 33 & 51 (service exchange) L.H.                     | 15224836SR  |
| 1b   | Brake assembly DX195 26, 34 & 52 (service exchange) R.H.                     | 15224837SR  |
| 2    | Brake pad kit  | MDP5076     |
| 3    | Spring pad**   | -           |
| 4    | Retaining pin**  | -           |
| 5    | Split pin**  | -           |
| 6    | M16 x 45 Caliper mounting bolt   | 21224908    |
| 7    | Hardened washer  | 21224978    |
| 8    | Plug**   | -           |
| 9    | Retaining washer**   | -           |
| 10   | M16 x 45 Caliper flanged mounting bolt – replaces items 6 & 7 from July 2001 | 21227146    |
| 11   | Stabiliser bar   | 2297J6692   |

\*\* Available in kit MBA100

### \* Brake Assembly Rear View

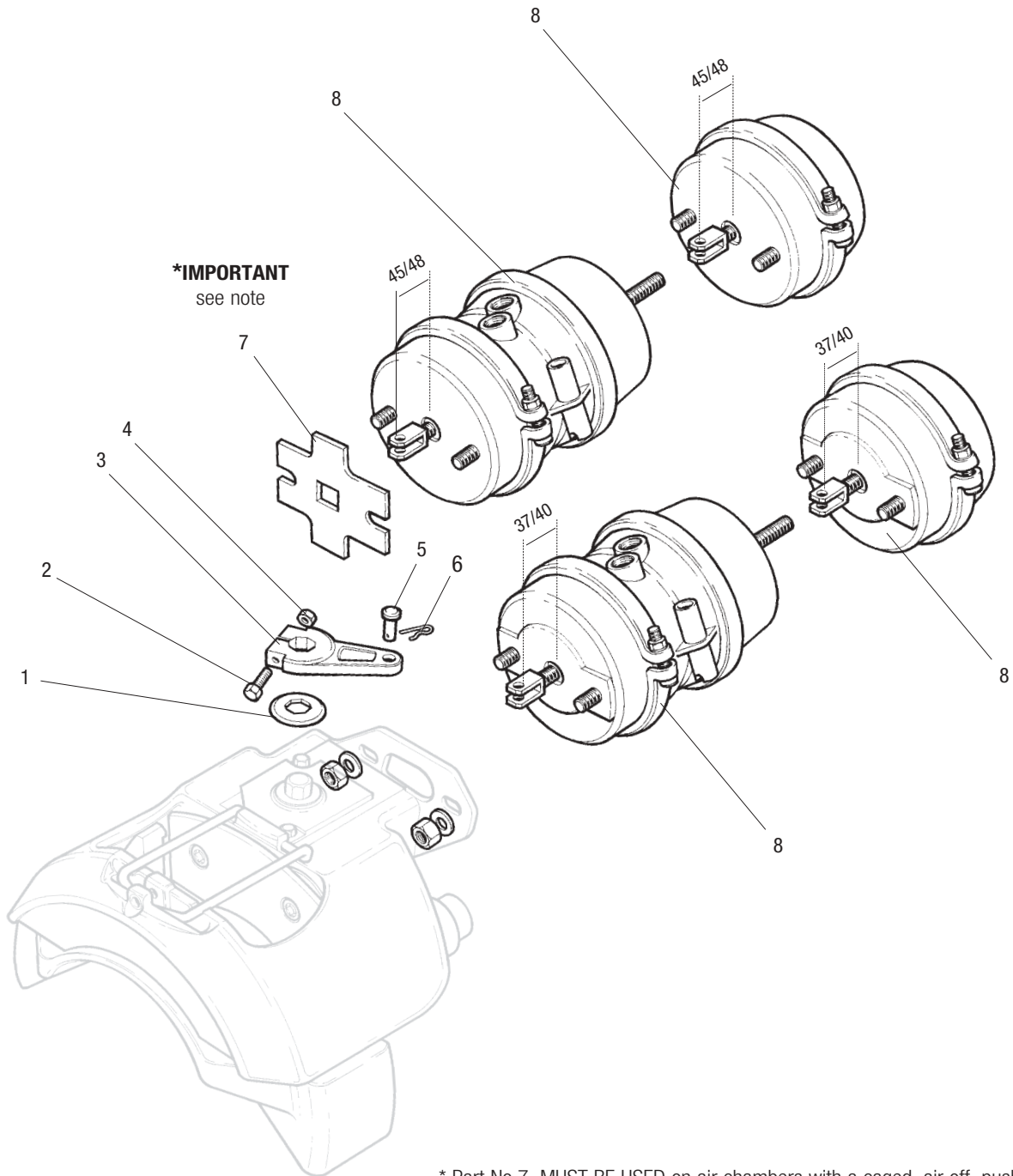


### DX195 Caliper Part Number Cross Reference

| Caliper  | Part Number                 |
|--|-----------------------------|
| DX195-45 with 90mm lever & pads                                  | 15224836SR (no pads/levers) |
| DX195-46 with 90mm lever & pads                                  | 15224837SR (no pads/levers) |
| DX195-47 with 80mm lever & pads                                  | 15224836SR (no pads/levers) |
| DX195-48 with 80mm lever & pads                                  | 15224837SR (no pads/levers) |
| DX195-51 ( <i>Aftermarket part numbers</i> ) – replaces DX195-33 | 15224836SR (no pads/levers) |
| DX195-52 ( <i>Aftermarket part numbers</i> ) – replaces DX195-34 | 15224837SR (no pads/levers) |

# LM & LC Parts List

## DX195 Actuation and Air Chambers



\* Part No.7. MUST BE USED on air chambers with a caged, air off, push rod length of 45/48mm, measured from the mounting face of the chamber to the centre of the clevis pin hole.

Later models of brake chamber with 37/40mm pushrod length have a formed front housing and MUST NOT be fitted with the spacer plate

# LM & LC Parts List

## DX195 Actuation and Air Chambers



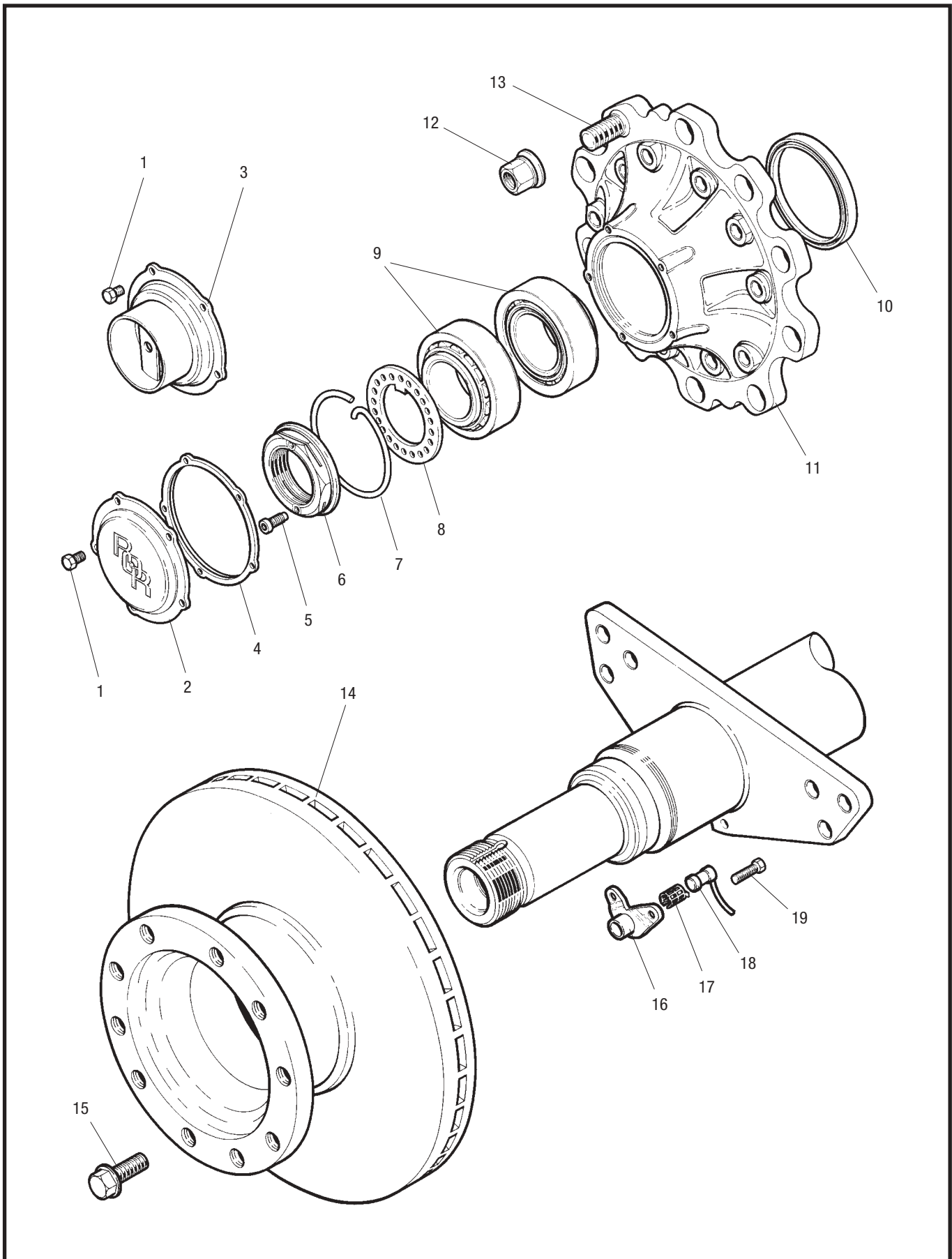
| Item | Description        | Part Number         |                     |
|------|--------------------|---------------------|---------------------|
| 1    | Lever boot         | 1205X2572           |                     |
| 2    | Clamp bolt M8 x 60 | MS208060Z1          |                     |
| 3    | Lever 80mm         | MCK1160             |                     |
| 3    | Lever 90mm         | MCK1161             |                     |
| 4    | Nut M8             | MNL208Z1            |                     |
| 5    | Clevis pin         | 21224985            |                     |
| 6    | R-Clip             | 21224996            |                     |
|      |                    | Part Number 45/48mm | Part Number 37/40mm |
| 7*   | Spacer plate       | 21224995            | None                |
| 8    | T 24/24            | 41225763            | 41225763**          |
| 8    | T 22/24            | 41225764            | 41225764            |
| 8    | T 20/24            | 41225765            | 41225765            |
| 8    | T 18/24            | 41225766            | 41225766            |
| 8    | T 24               | 41225767            | 41225767            |
| 8    | T 22               | 41225768            | 41225768            |
| 8    | T 20               | 41225769            | 41225769            |
| 8    | T 18               | 41224964            | 41225770            |

\* Part No.7. Must be used on air chambers with a caged, air off, push rod length of 45/48mm.  
It must never be used on chambers with a caged push rod length of 37/40mm.

\*\* In tandem applications the following chambers are used: 41227590 (RH) – 41227591 (LH)

# LM & LC Parts List

## LM ELSA 2 Hub, Disc and ABS Assembly



# LM & LC Parts List

## LM ELSA 2 Hub, Disc and ABS Assembly



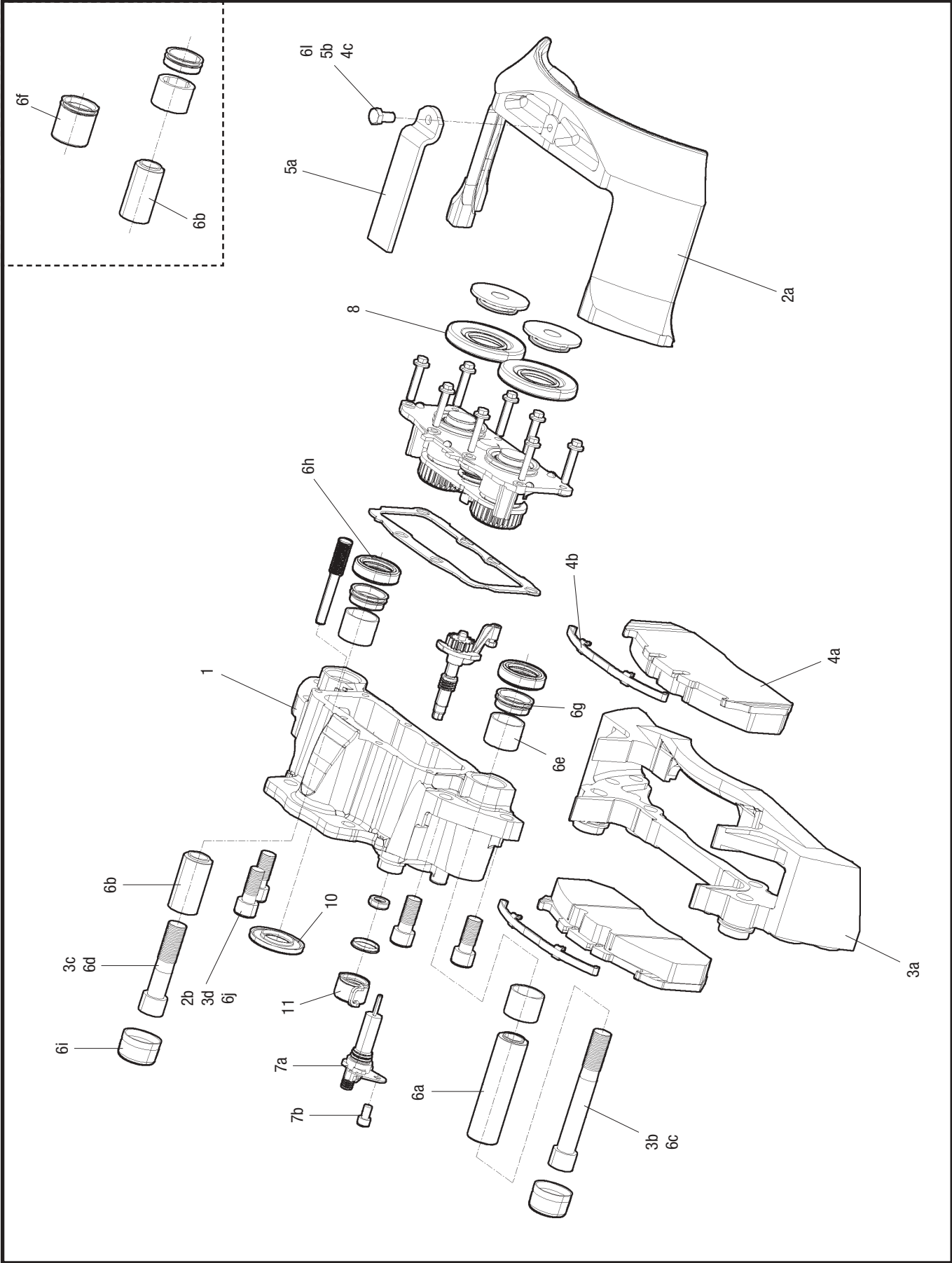
| Item | Description  | Part Number |
|------|--|-------------|
| 1    | Screw, hub cap   | 99543001    |
| 2    | Hub cap  | 21224673    |
| 3    | Hub cap – hubodometer  | 21224904    |
| 4    | Gasket, hub cap  | 21224759    |
| 5    | Screw, pinch nut   | 21224864    |
| 6    | Pinch nut  | 21224762    |
| 7    | Retaining clip   | 21224865    |
| 8    | Retaining washer   | 21224669    |
| 9    | Bearings   | 99041075    |
| 10   | Oil seal   | 21200321A   |
| 11   | LM Hub assembly*   | 14225425    |
| 11A  | LC Hub assembly (not shown)**  | —           |
| 12   | Wheel nut  | 21226396    |
| 13   | Wheel bolt, steel wheel  | 21225086    |
| 13   | Wheel bolt, aluminium wheel  | 21220132    |
| 13   | Wheel bolt, universal steel/aluminium wheel, coated, (use with dacromat wheel nut) | 21226340    |
| 14   | Brake disc   | MBR9004     |
| 15   | M16 x 60 Brake disc flanged mounting bolt  | 21227263    |
| 16   | Sensor block   | 21227415    |
| 17   | Spring clip  | 21213036    |
| 18   | Sensor   | 21213034    |
| 19   | Screw, sensor bracket  | 99543002    |

\*Does not include items 5 or 6.

\*\*see page 13 for LC hub parts

# LM & LC Parts List

## ELSA 2 Brake Assembly



# LM & LC Parts List

## ELSA 2 Brake Assembly

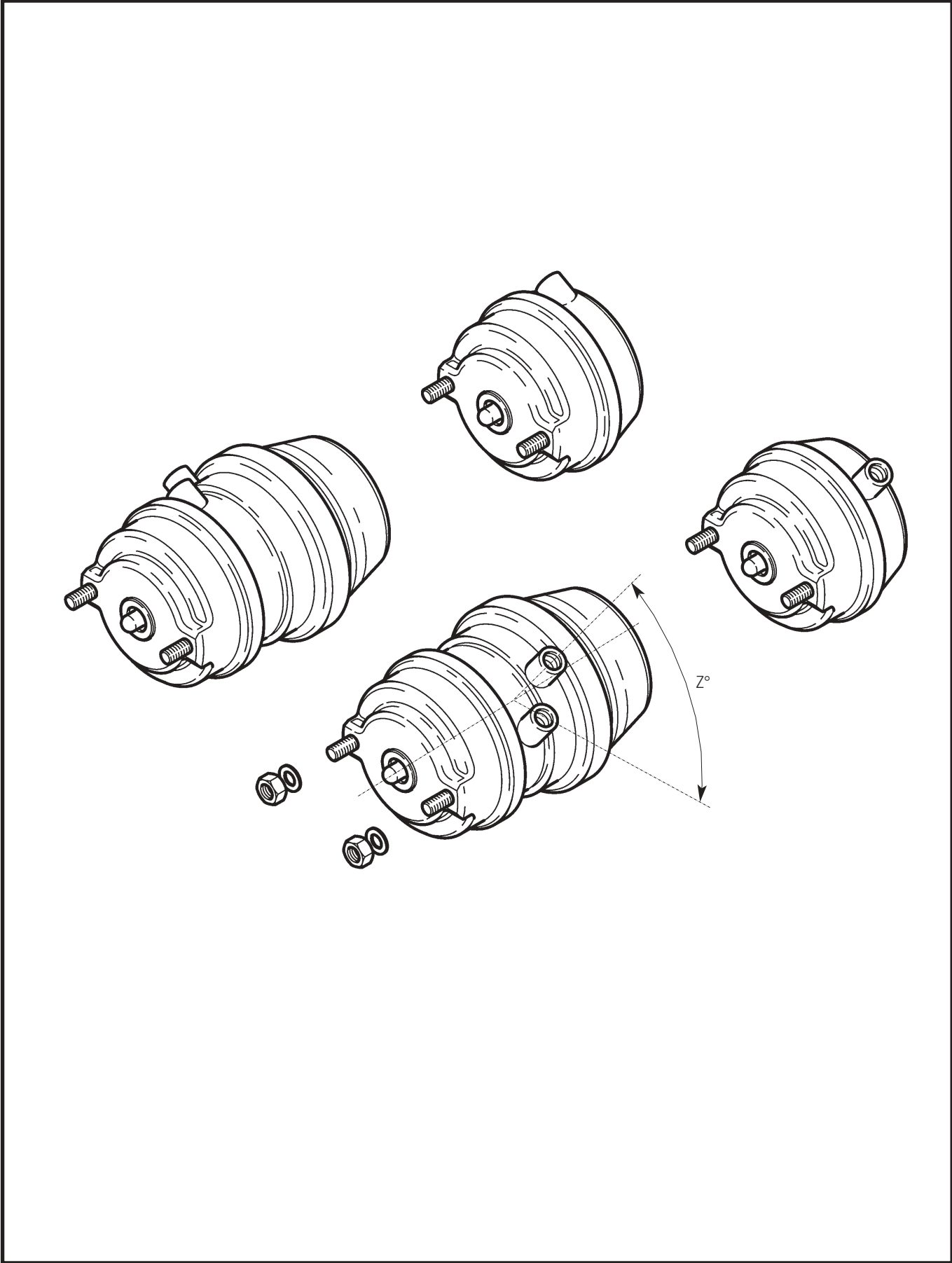


| Item  | Description  | Part Number  |
|-------|--|--------------|
| 1     | Service caliper, RH                                | LRG572       |
| 1     | Service caliper, LH                                | LRG573       |
| 3a-3d | Carrier kit  | MCK1146      |
| 4a-4c | Brake pad kit                                      | MDP5073      |
| 5a-5b | Pad retainer kit                                   | MCK1174      |
| 6a-6j | Guide pin kit*                                     | MCK1140      |
| 8     | Tappet head kit*                                   | MCK1139      |
| 10    | Actuator seal                                      | 68323746PK10 |
| 11    | Adjuster stem dust cover                           | 68322655PK10 |
| 12    | M18 x 50 Caliper flanged mounting bolt (not shown) | 21227433     |

\*includes grease (not shown)

# LM & LC Parts List

LM/LC ELSA 2 Air Chamber Assembly





# LM & LC Parts List

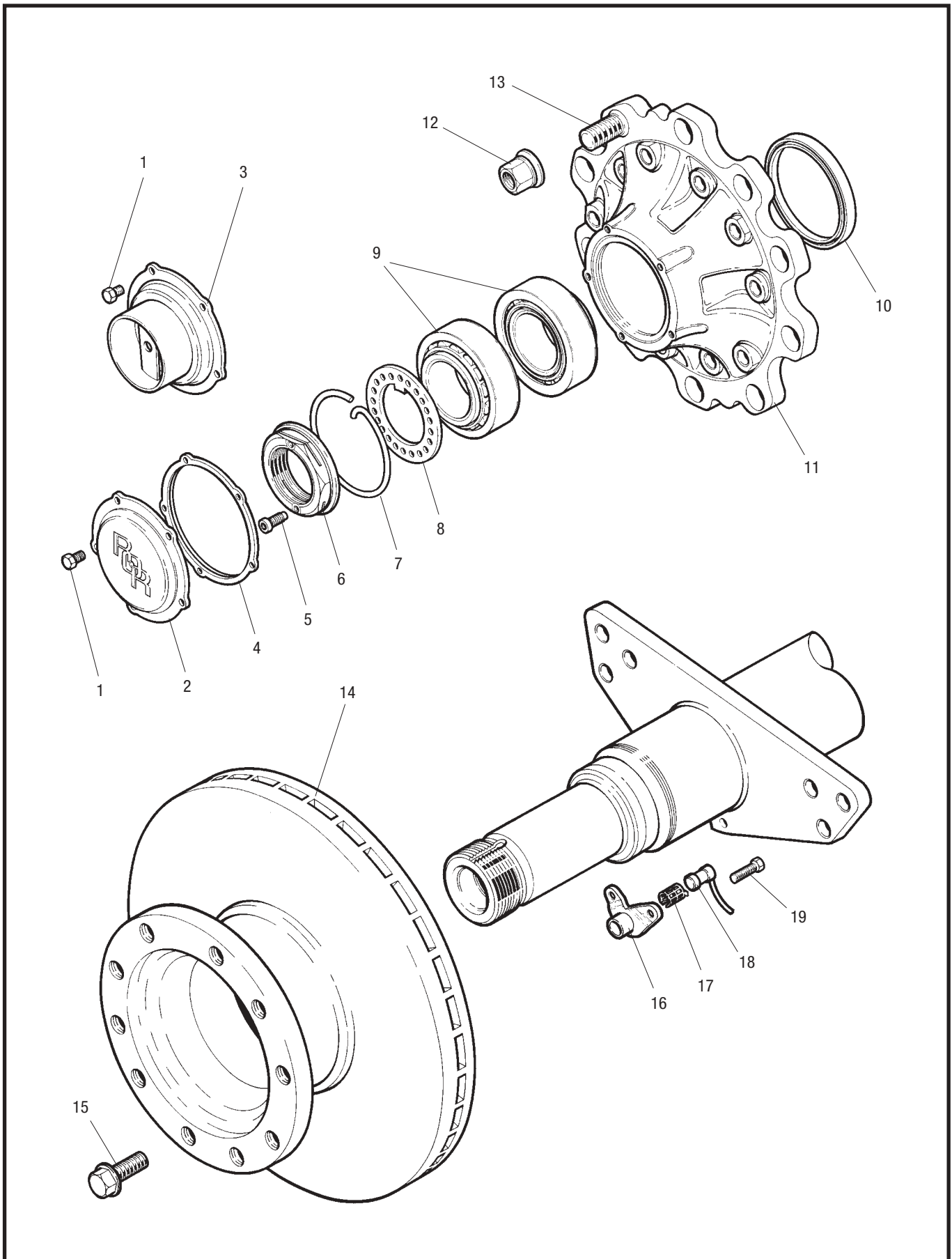
## LM/LC ELSA 2 Air Chamber Assembly



| Air chamber Type | Port orientation (angle Z°) |          |
|------------------|-----------------------------|----------|
|                  | 45°                         | 135°     |
| T14              | 41227562                    | 41227563 |
| T16              | 41227564                    | 41227565 |
| T18              | 41227865                    | 41227866 |
| T20              | 41228284                    | 41228285 |
| T27              | 41227576                    | 41227577 |
| T14/24           | 41227566                    | 41227567 |
| T16/24           | 41227568                    | 41227569 |
| T18/24           | 41227570                    | 41227571 |
| T20/24           | 41227572                    | 41227573 |
| T22/24           | 41227574                    | 41227575 |
| T24/24           | 41227867                    | 41227868 |
| T27/30           | 41228528                    | 41228529 |

# LM & LC Parts List

## LM ELSA 195 Hub, Disc and ABS Assembly



# LM & LC Parts List

## LM ELSA 195 Hub, Disc and ABS Assembly



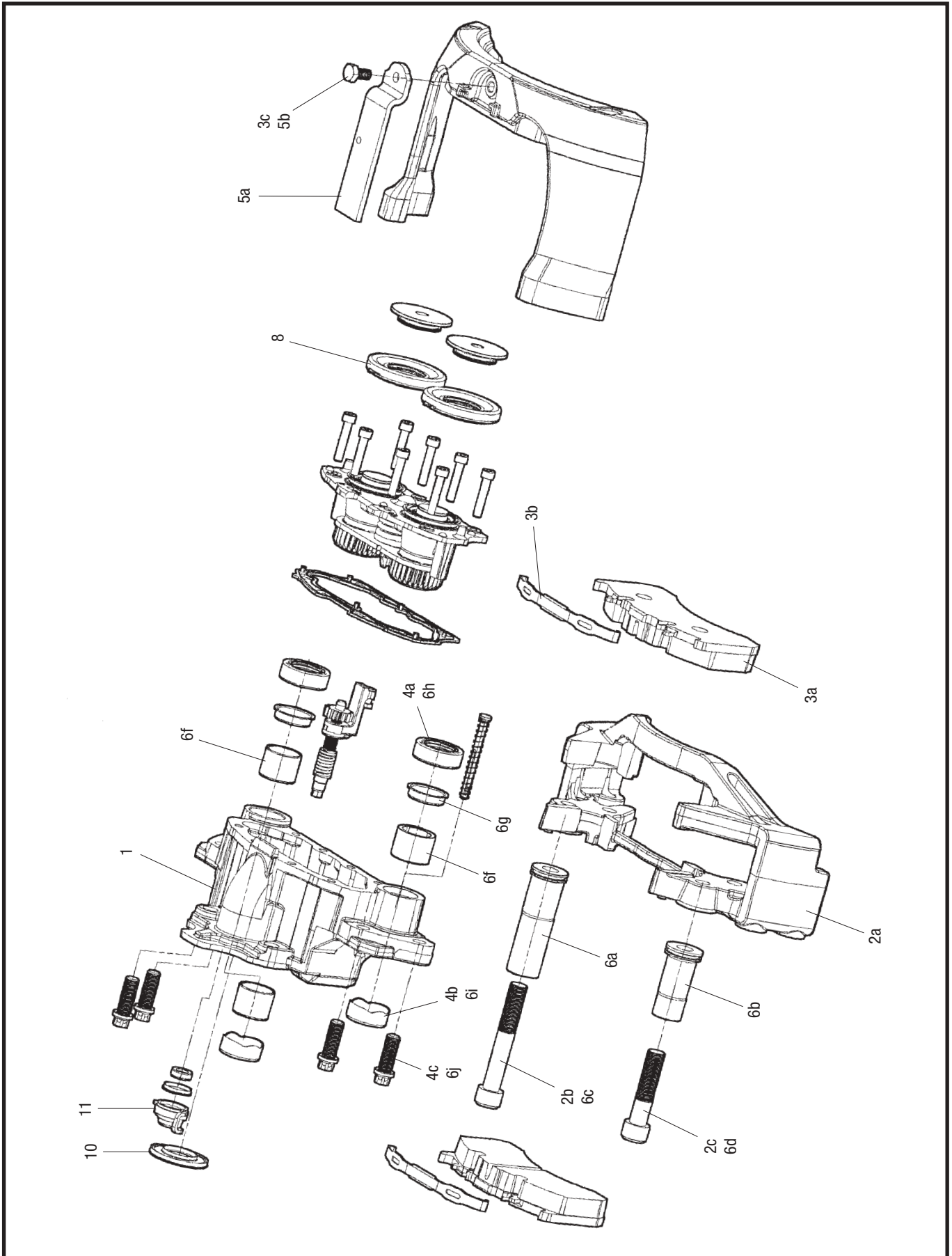
| Item | Description  | Part Number |
|------|--|-------------|
| 1    | Screw, hub cap   | 99543001    |
| 2    | Hub cap  | 21224673    |
| 3    | Hub cap – hubodometer  | 21224904    |
| 4    | Gasket, hub cap  | 21224759    |
| 5    | Screw, pinch nut   | 21224864    |
| 6    | Pinch nut  | 21224762    |
| 7    | Retaining clip   | 21224865    |
| 8    | Retaining washer   | 21224669    |
| 9    | Bearings   | 99041075    |
| 10   | Oil seal   | 21200321A   |
| 11   | LM Hub assembly*   | 14225425    |
| 11A  | LC Hub assembly (not shown)**  | —           |
| 12   | Wheel nut  | 21226396    |
| 13   | Wheel bolt, steel wheel  | 21225086    |
| 13   | Wheel bolt, aluminium wheel  | 21220132    |
| 13   | Wheel bolt, universal steel/aluminium wheel, coated, (use with dacromat wheel nut) | 21226340    |
| 14   | Brake disc   | 21227349    |
| 15   | M18 x 50 Brake disc flanged mounting bolt  | 21227433    |
| 16   | Sensor block   | 21227927    |
| 17   | Spring clip  | 21213036    |
| 18   | Sensor   | 21213034    |
| 19   | Screw, sensor bracket  | 99543002    |

\*Does not include items 5 or 6.

\*\*see page 13 for LC hub parts

# LM & LC Parts List

## ELSA 195 Brake Assembly



# LM & LC Parts List

## ELSA 195 Brake Assembly

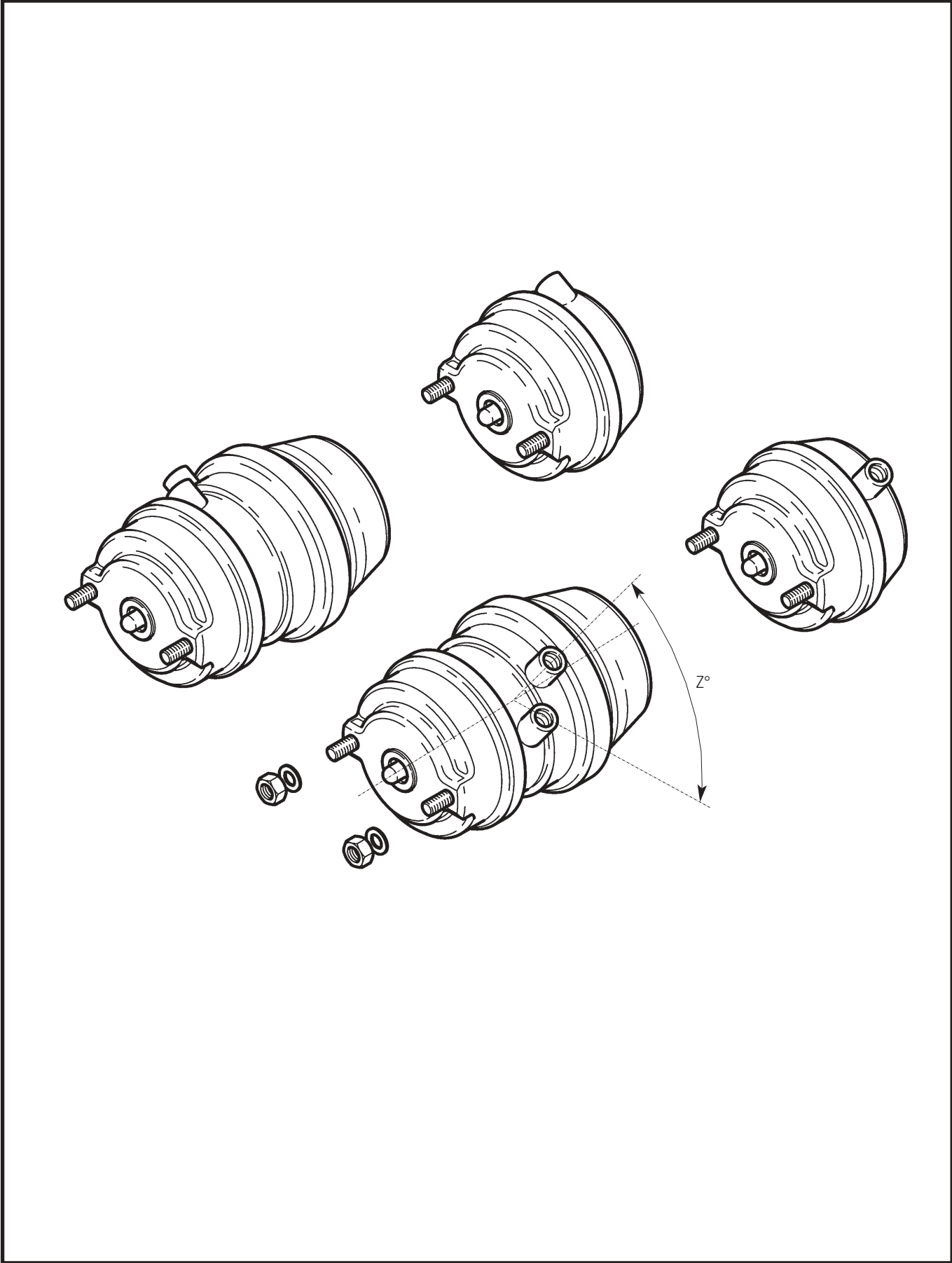


| Item  | Description  | Part Number  |
|-------|--|--------------|
| 1     | Service caliper, RH                                | LRG702       |
| 1     | Service caliper, LH                                | LRG703       |
| 2a-2c | Carrier kit  | MCK1252      |
| 3a-3c | Brake pad kit                                      | MDP5093      |
| 4a-4c | Seal kit*  | MCK1253      |
| 5a-5b | Pad retainer kit                                   | MCK1174      |
| 6a-6j | Guide pin kit*                                     | MCK1254      |
| 8     | Piston head seal kit*                              | MCK1139      |
| 9     | Pad wear warning indicator kit (not shown)         | MBAKIT1051   |
| 10    | Actuator seal                                      | 68323746PK10 |
| 11    | Adjuster stem dust cover                           | 68322655PK10 |
| 12    | M18 x 50 Caliper flanged mounting bolt (not shown) | 21227433     |

\*includes grease (not shown)

# LM & LC Parts List

LM/LC ELSA 195 Air Chamber Assembly



# LM & LC Parts List

## LM/LC ELSA 195 Air Chamber Assembly



| Air chamber<br>Type | Port orientation (angle Z°) |          |
|---------------------|-----------------------------|----------|
|                     | 45°                         | 135°     |
| T14                 | 41226792                    | 41226793 |
| T16                 | 41226798                    | 41226799 |
| T18                 | 41226804                    | 41226805 |
| T20                 | 41226808                    | 41226809 |
| T22                 | 41229265                    | 41229266 |
| T24                 | 41229269                    | 41229270 |
| T27                 | 41226822                    | 41226823 |
| T14/16              | 41226794                    | 41226795 |
| T14/24              | 41226796                    | 41226797 |
| T16/16              | 41226800                    | 41226801 |
| T16/24              | 41226802                    | 41226803 |
| T18/24              | 41226806                    | 41226807 |
| T20/24              | 41226810                    | 41226811 |
| T22/24              | 41229267                    | 41229268 |
| T24/24              | 41229271                    | 41229272 |
| T24/30              | 41226820                    | 41226821 |
| T27/30              | 41226824                    | 41226825 |
| T30/30              | 41226826                    | 41226827 |

# LM & LC Parts List

## Warranty

A comprehensive network of original parts distributors and service stations operate throughout Europe; this is supported internationally with agents strategically placed around the world.

All Meritor replacement parts obtained through original parts distributors are covered by a one year warranty.

**For full warranty terms and conditions see 'Meritor Warranty Terms and Conditions' Publication No 4.84.1**

Meritor reserve the right to make changes in specifications shown herein or add improvements at any time without notice or obligation.

PARTS SHOWN IN THIS SPARES LIST ARE MADE FROM DRAWINGS IN WHICH COPYRIGHT SUBSISTS. THE MAKING OF COPIES OF ANY OF THESE PARTS IS PROHIBITED.

© Meritor HVS Limited



*The high quality assurance management systems applied by Meritor are endorsed with the awarding of ISO 9001, Lloyd's Register Quality Assurance.*



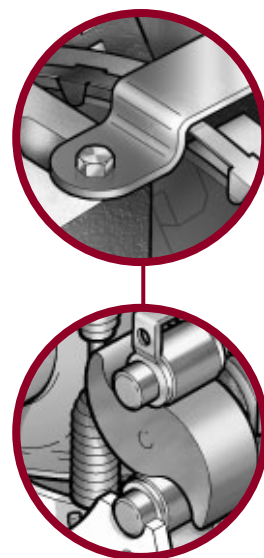
# LM & LC Parts List



# LM & LC Parts List

# LM & LC Parts List





**ArvinMeritor**

Commercial Vehicle Aftermarket AG  
Neugutstrasse 89  
8600 Dübendorf  
Switzerland  
Tel: +41 (0)44 824 82 00  
Fax: +41 (0)44 824 82 65

**ArvinMeritor**

Commercial Vehicle Aftermarket Ltd.  
Park Lane, Great Alne, Alcester  
Warwickshire B49 6HT  
U.K.  
Tel: 0845 606 7733  
Fax: 0845 606 8844

[www.arvinmeritor.com](http://www.arvinmeritor.com)

Descriptions and specifications were in effect at the time of publication and are subject to change without notice or liability. Meritor reserve the right to make design improvements, change or discontinue parts at any time.

© Copyright 2004  
Meritor Automotive  
All rights Reserved

Issued 08-04  
Publication CVA-4.89.3

**ArvinMeritor™**