



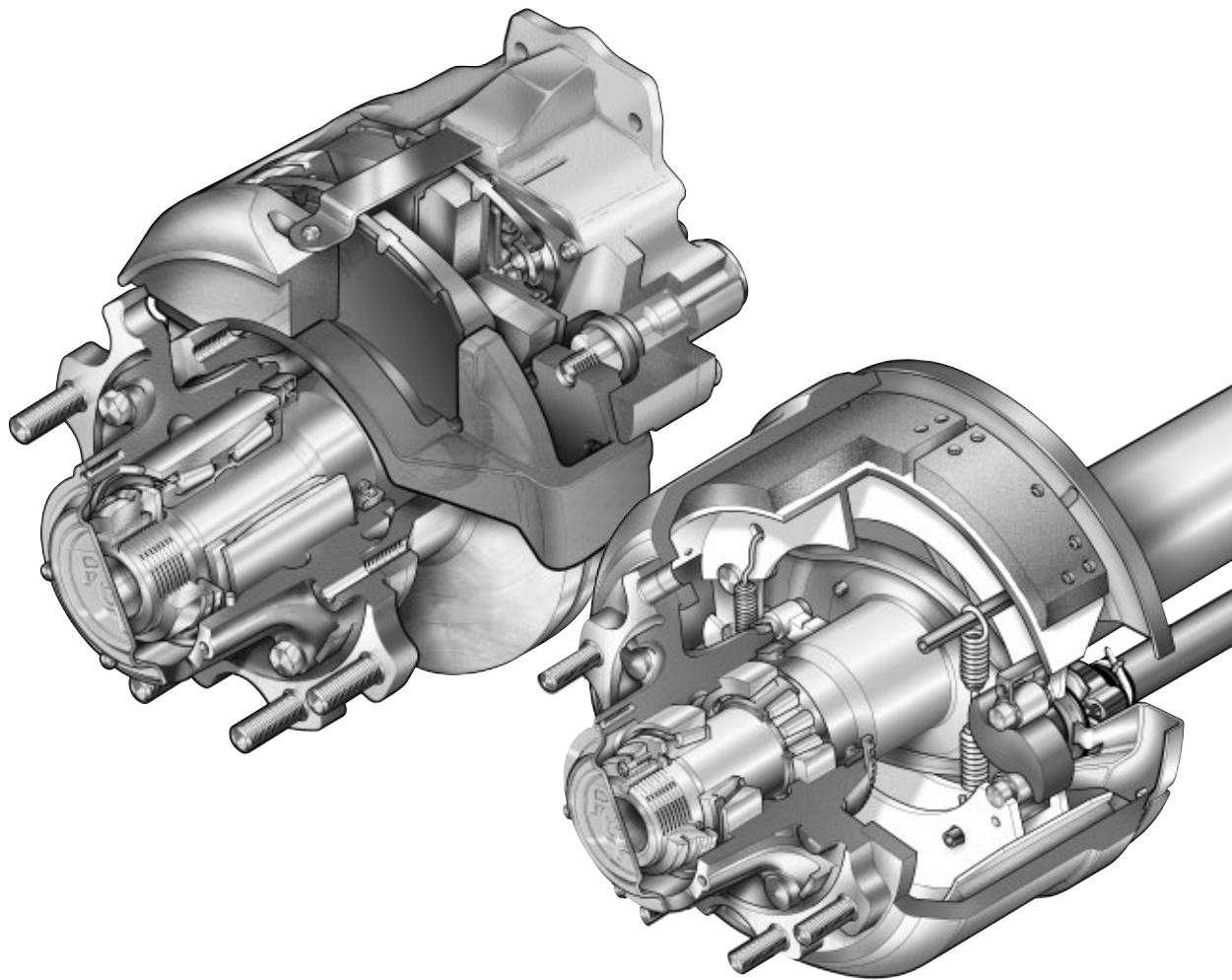
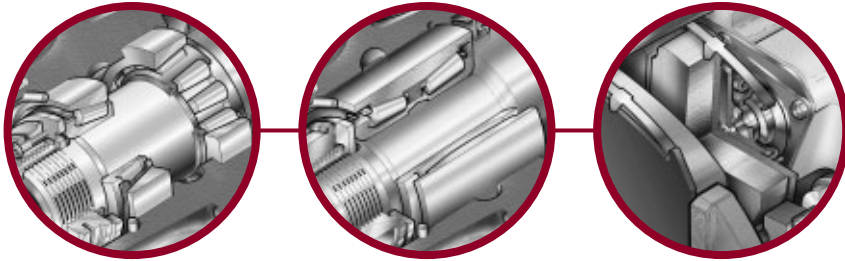
MERITOR™

ROR Trailer Products

Axle & Brake Parts List

TA and TC Series Axles

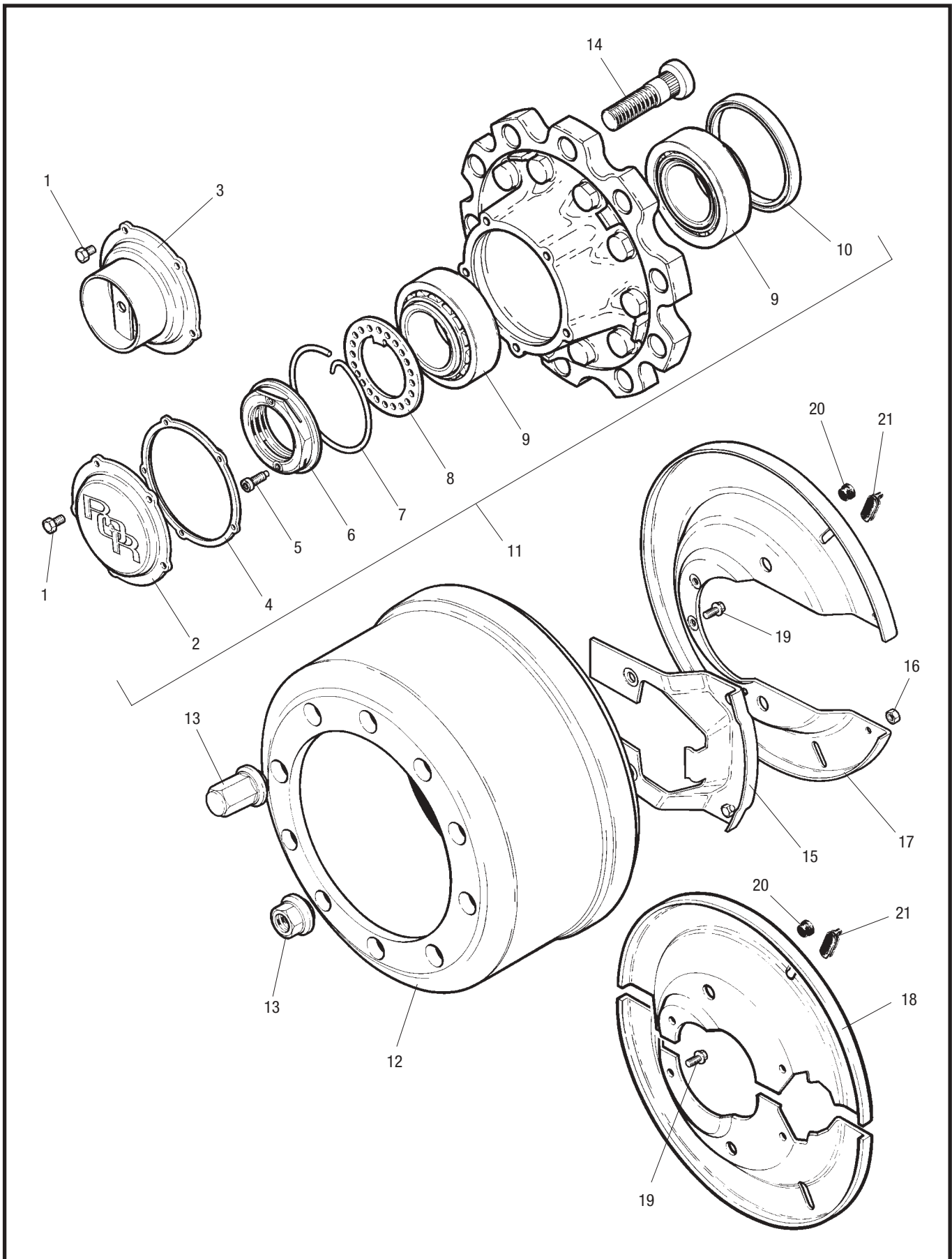
including disc and drum brake variants



ArvinMeritor™

TA & TC Parts List

TA Hub Assembly



TA & TC Parts List

TA/TC Hub Assembly



MERITOR™

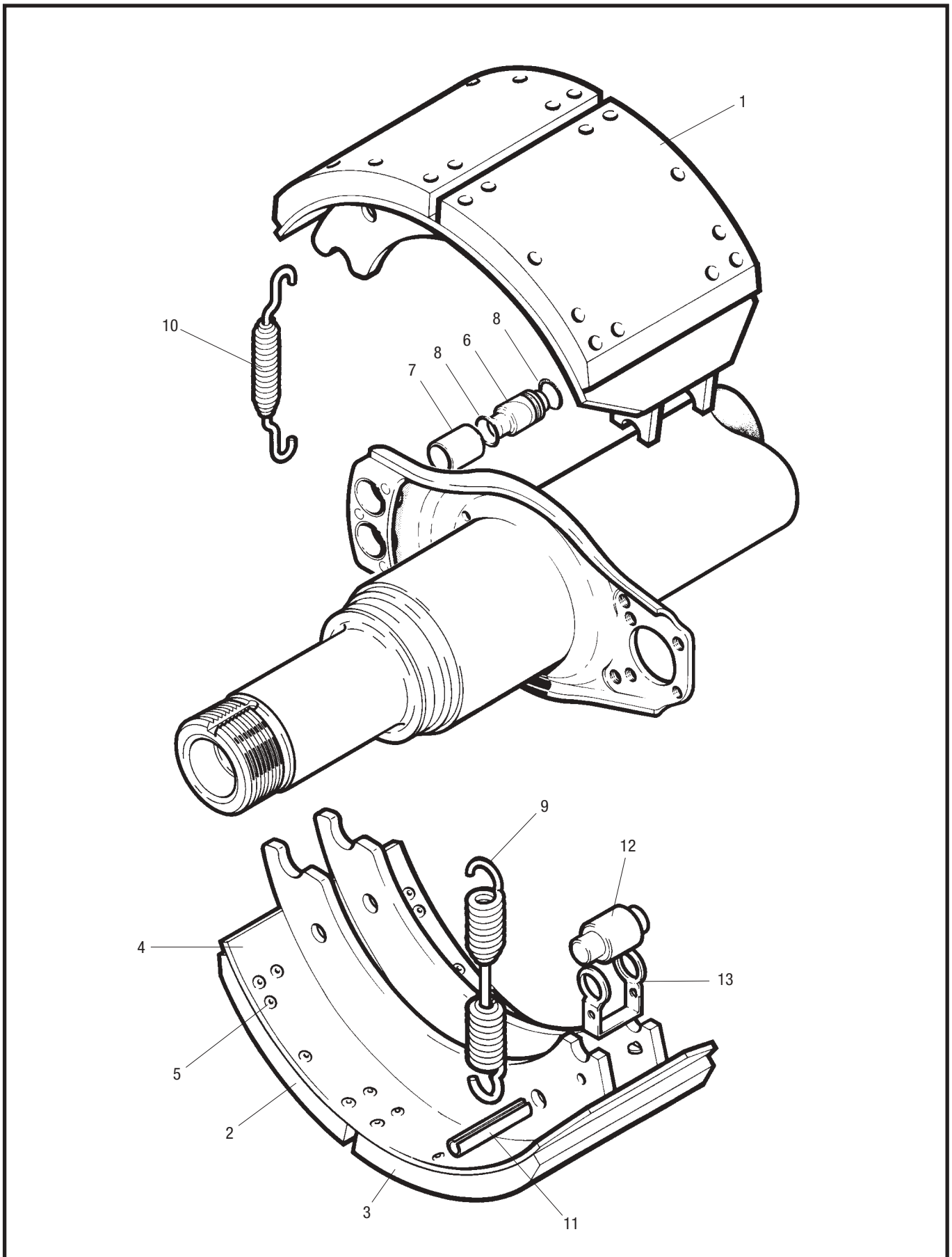
Item	Description	Part Number
1	Screw, hub cap	99543001
2	Hub cap	21226038
3	Hub cap – hubodometer	21226118
4	Gasket, hub cap	21226119
5	Screw, pinch nut	21224864
6	Pinch nut	21226003
7	Retaining clip	21226117
8	Retaining washer	21226090
9	Bearing, inner & outer	99041035S
10	Oil seal	21200321A
11	TA Hub assembly, twin & single wheel	14226120
11A	TC Hub assembly (not shown)*	–
12	Brake drum, 420 x 180 'Q'	21018986V
12	Brake drum, 420 x 220 'Z'	21021114AV
13	Wheel nut	see table below
14	Wheel bolt, steel single wheel	21022167
14	Wheel bolt, steel twin wheel, aluminium single wheel	21020997
14	Wheel bolt, aluminium twin wheel	21206355
15	Filler plate, dust cover, 420 x 180 'Q' brake only	15224518
15	Filler plate, dust cover, 420 x 180 'Q' brake only, after April 2001	15225842
16	Nut, filler plate, dust cover, 420 x 180 'Q' brake only	99544000
17	Dust cover, 420 x 180 'Q' brake only	21224522
18	Dust cover pair, 420 x 220 'Z' brake only	21221567/8
19	Screw, dust cover, 'Q' & 'Z'	99546002
20	Plug, blanking, 'Q' & 'Z'	21211385
21	Plug, inspection, 'Q' & 'Z'	21220719
22	400g Cartridge MERITOR hub grease (not shown)	99538007
23	100g Tube Optimol Optimoly White Paste T (not shown)	99538009

*see page 13 for TC hub parts

WHEEL NUTS 32mm ACROSS FLATS		
NEW PART NUMBER	TYPE	FINISH COATING
21226395	STANDARD OPEN	PHOSPHATE & OIL
21226396	STANDARD OPEN	DACROMET 500 & OIL
21226397	CLOSED END	PHOSPHATE & OIL
21226484	CLOSED END	DACROMET 500 & OIL

TA & TC Parts List

TA/TC Brake Assembly



TA & TC Parts List

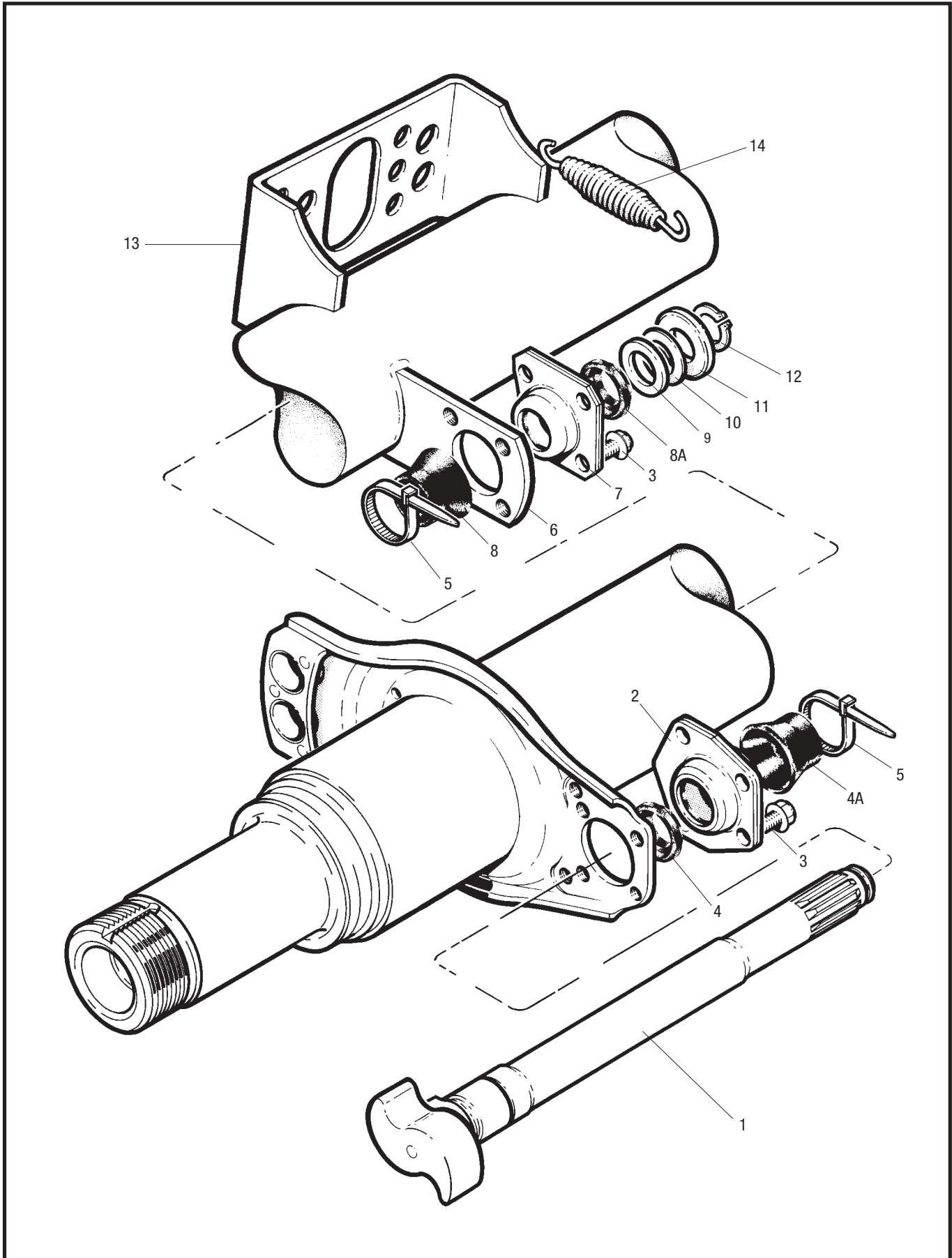
TA/TC Brake Assembly



Item	Description	'Q' 420 x 180	'Z' 420 x 220
1	Brake shoe lined assembly	15205536R	15205192R
2	Brake lining, anchor end	BLKQR	BLKZR
3	Brake lining, cam end		
4	Brake shoe unlined	15205533S	15205191S
5	Rivet	21200761	21200761
6	Anchor pin	21205193G	21205193G
7	Bush, anchor pin	21221028	21221028
8	'O' ring, anchor pin	21220668	21220668
9	Release spring	21221224	21221224
10	Retainer spring	21205194	21205194
11	Pin	21220171	21220171
12	Cam roller	21006610	21006610
13	Roller retaining clip	21224831	21224831

TA & TC Parts List

TA/TC Camshaft Assembly – up to 31st March 2001



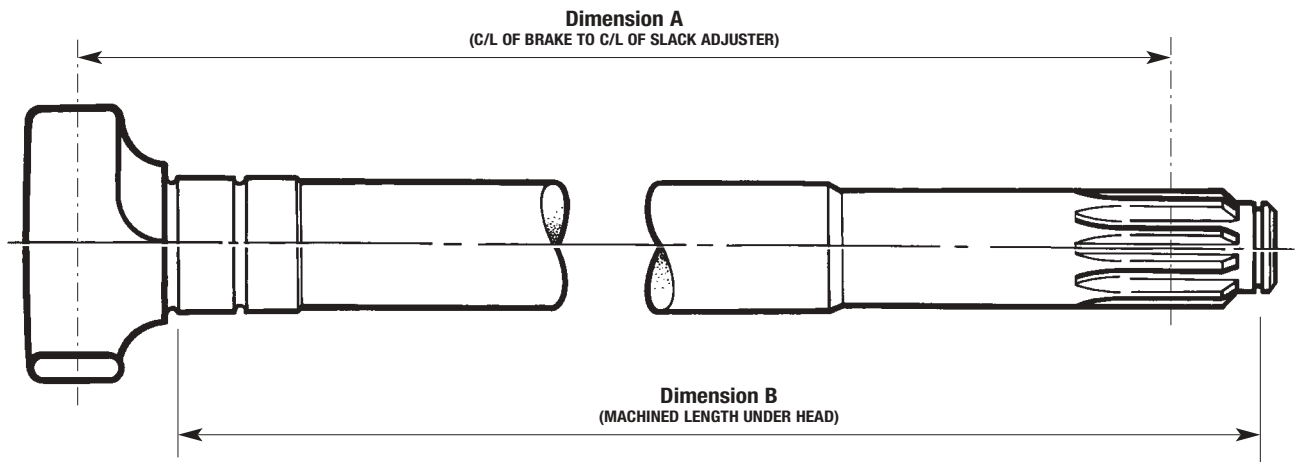
TA & TC Parts List

TA/TC Camshaft Assembly – up to 31st March 2001



Item	Description	Part Number
1	Camshaft LH/RH	See table below
2	Cam head bearing assembly	15224821
3	Screw, bearing	99546002
4	Inner boot, cam end	21224729
4A	Outer boot, cam end	21224730
5	Tie wrap	21221065
6	Camshaft bracket (axles built after Sept '99)	21020300
7	Spline end bearing assembly	15213430
8	Inner boot, spline end	21204849
8A	Outer boot, spline end	21205667
9	Washer, spacing, thick	21006627
10	Washer, spacing, thin	21006662
11	Retaining washer	21219862
12	Circlip	99507030
13	Air chamber bracket	21201592
14	Assister spring	21210215
*15	25g Sachet MERITOR grease (not shown)	99226786
*15	400g Cartridge MERITOR grease (not shown)	99226787

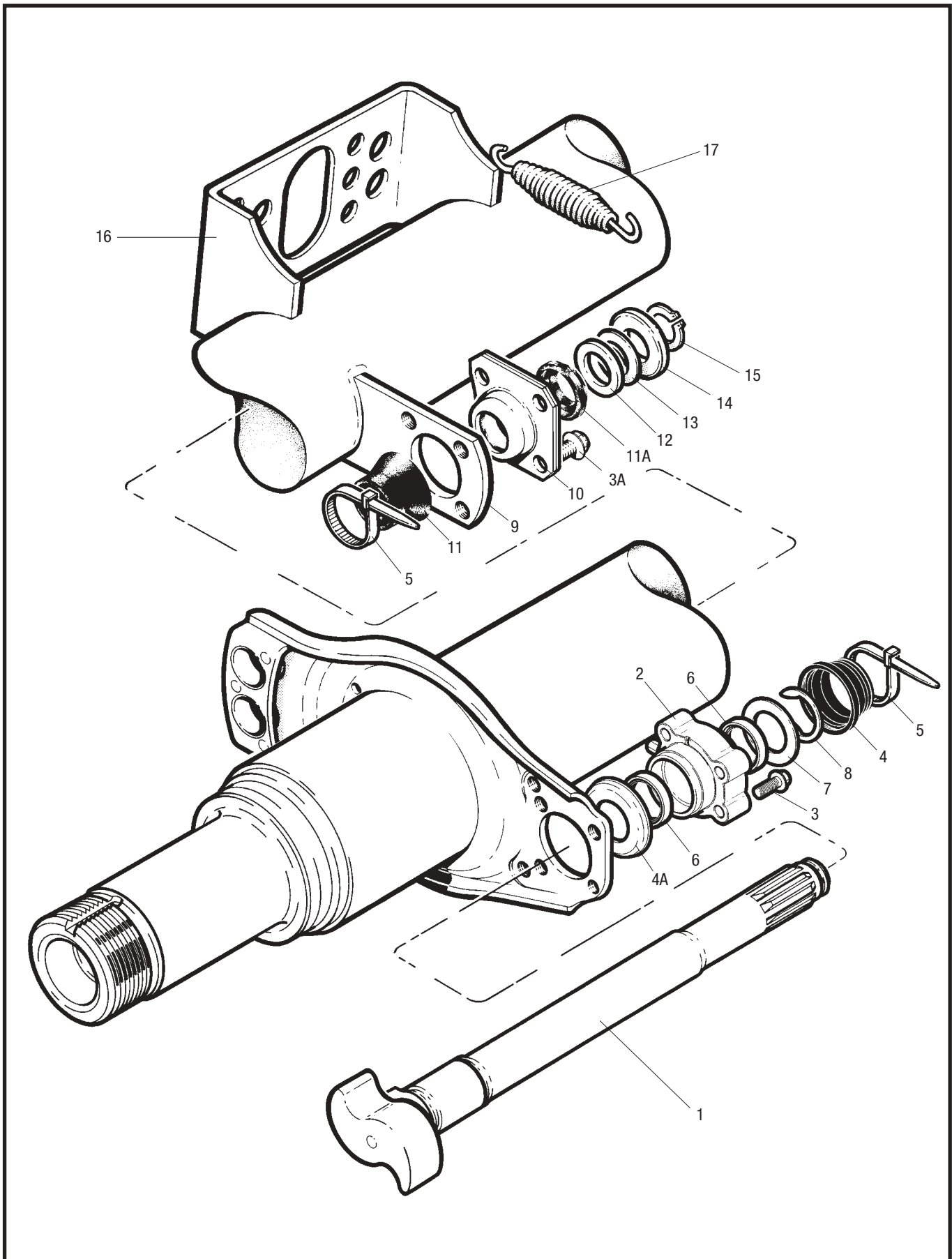
*NB. Item 15 must be used on items 2 & 7.



Dimension 'A'	Dimension 'B'	Part Number	
		Right Hand	Left Hand
229.9	232.4	21223154	21223155
253.5	258.0	21222949	21222950
412.2	416.7	21222183	21222184
475.7	480.2	21222185	21222186
521.0	525.5	21221070S	21221071S
544.5	549.0	21222700	21222701
564.0	568.5	21222386	21222387
583.0	587.5	21221194S	21221195S
605.5	610.0	21222187	21222188
622.5	627.0	21222189	21222190
632.5	637.0	21222191	21222192

TA & TC Parts List

TA/TC Camshaft Assembly – from 1st April 2001



TA & TC Parts List

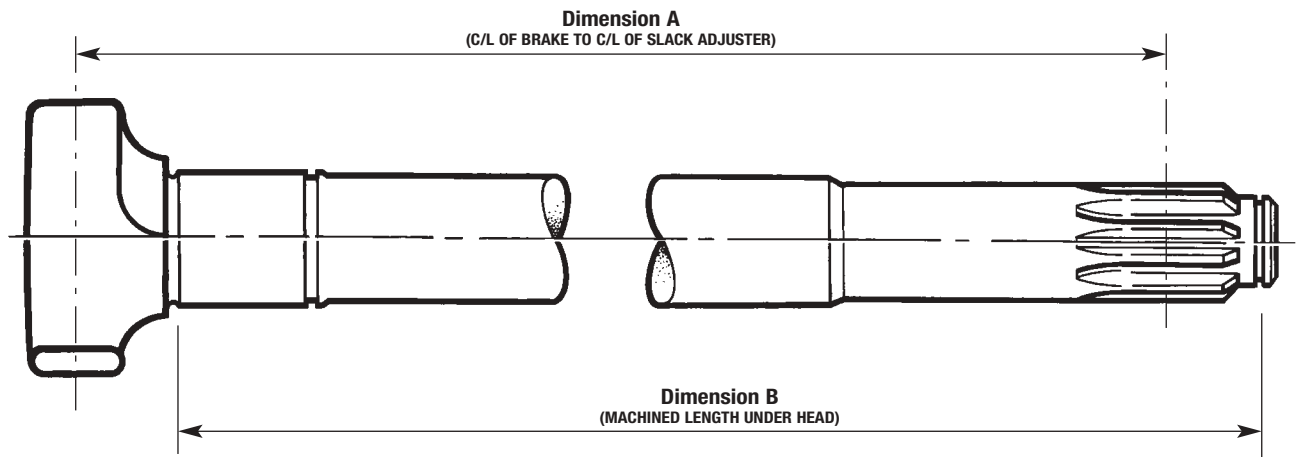
TA/TC Camshaft Assembly – from 1st April 2001



Item	Description	Part Number
1	Camshaft LH/RH	See table below
2	Cam head bearing assembly**	A23105Q1213
3	Screw, bearing, cam end**	99546000
3A	Screw, bearing, spline end**	99546002
4	Washer seal**	1229K4795
4A	Boot, cam end**	2260K1155
5	Tie wrap**	21221065
6	Lip seal (part of item 2)	-
7	Washer**	1229S4101
8	Snap ring**	1229T4102
9	Camshaft bracket	21020300
10	Spline end bearing assembly**	15213430
11	Inner boot, spline end**	21204849
11A	Outer boot, spline end**	21205667
12	Washer, spacing, thick**	21006627
13	Washer, spacing, thin**	21006662
14	Retaining washer**	21219862
15	Circlip**	99507030
16	Air chamber bracket	21201592
17	Assister spring	21210215
*18	25g Sachet MERITOR grease (not shown)	99226786
*18	400g Cartridge MERITOR grease (not shown)	99226787

*NB. Item 18 must be used on items 2 & 10.

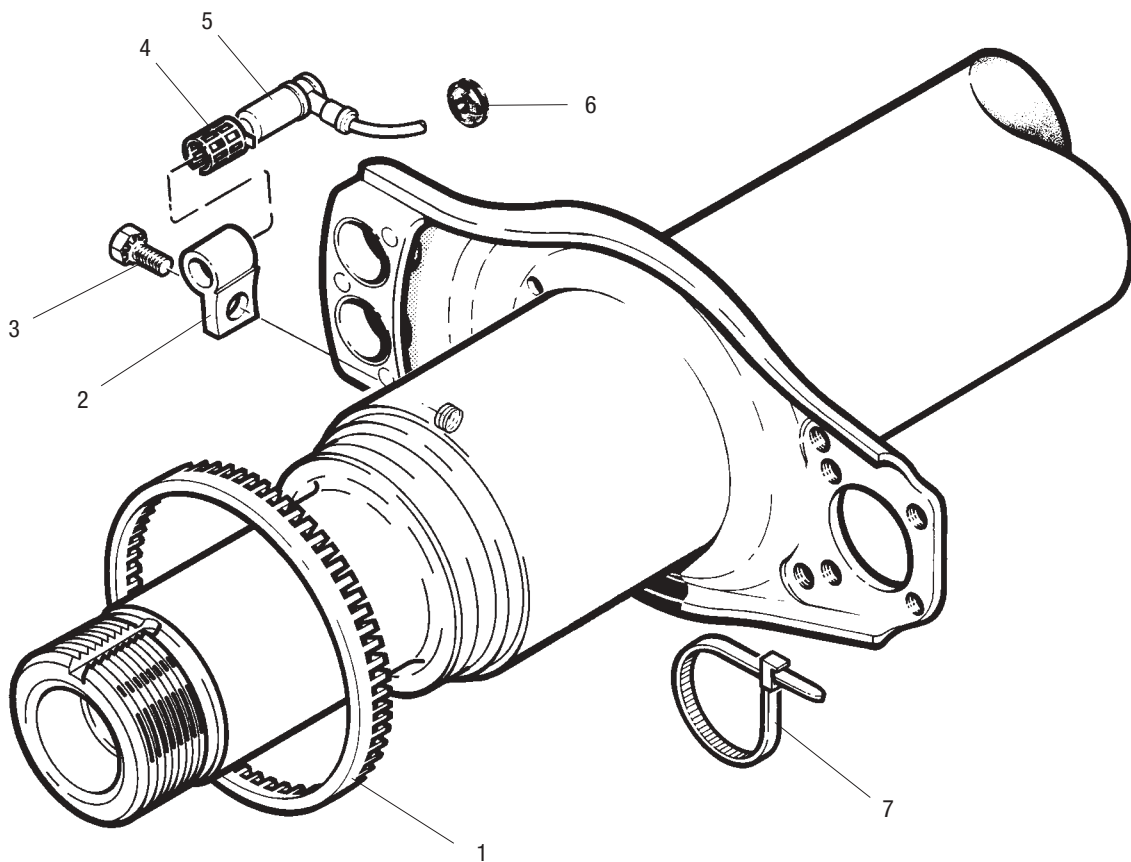
** All contained in service kit AXL 140



Dimension 'A'	Dimension 'B'	Part Number	
		Right Hand	Left Hand
229.9	232.4	21227113	21227114
412.2	416.7	21227111	21227112
521.0	525.5	21227109	21227110
583.0	587.5	21227107	21227108
605.5	610.0	21227105	21227106
622.5	627.0	21227103	21227104
632.5	637.0	21227101	21227102

TA & TC Parts List

TA/TC Anti-lock Assembly



TA & TC Parts List

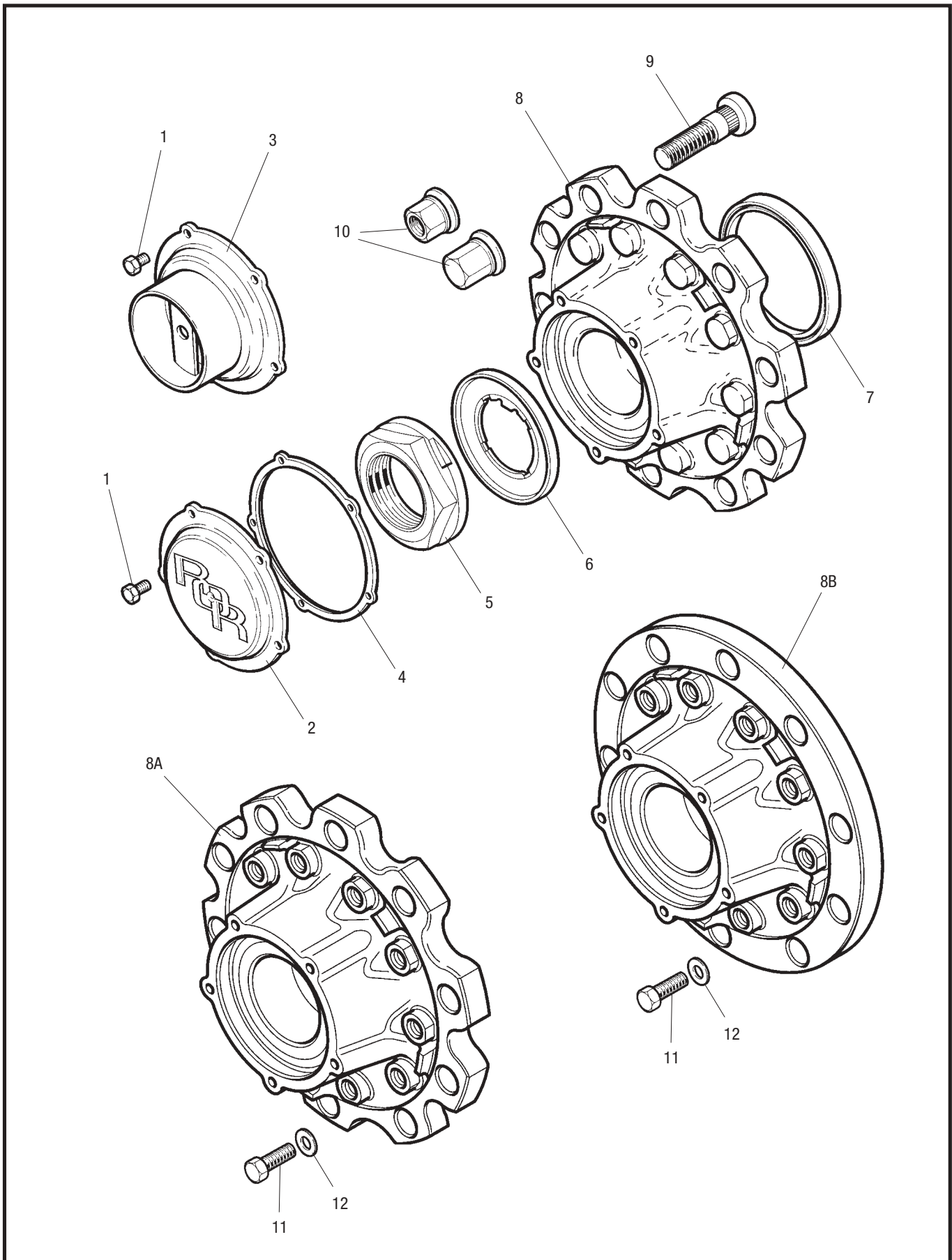
TA/TC Anti-lock Assembly



Item	Description	Part Number
1	Pole wheel	21213316
2	Sensor block	22224705
3	Screw, sensor block	99541002
4	Spring clip	21213036
5	Sensor	21213034
6	Strain relief bush	21222319
7	Cable tie	21221065
8	Grease for sensor bush (not shown)	99226786

TA & TC Parts List

TC Hub Assembly



TA & TC Parts List

TC Hub Assembly

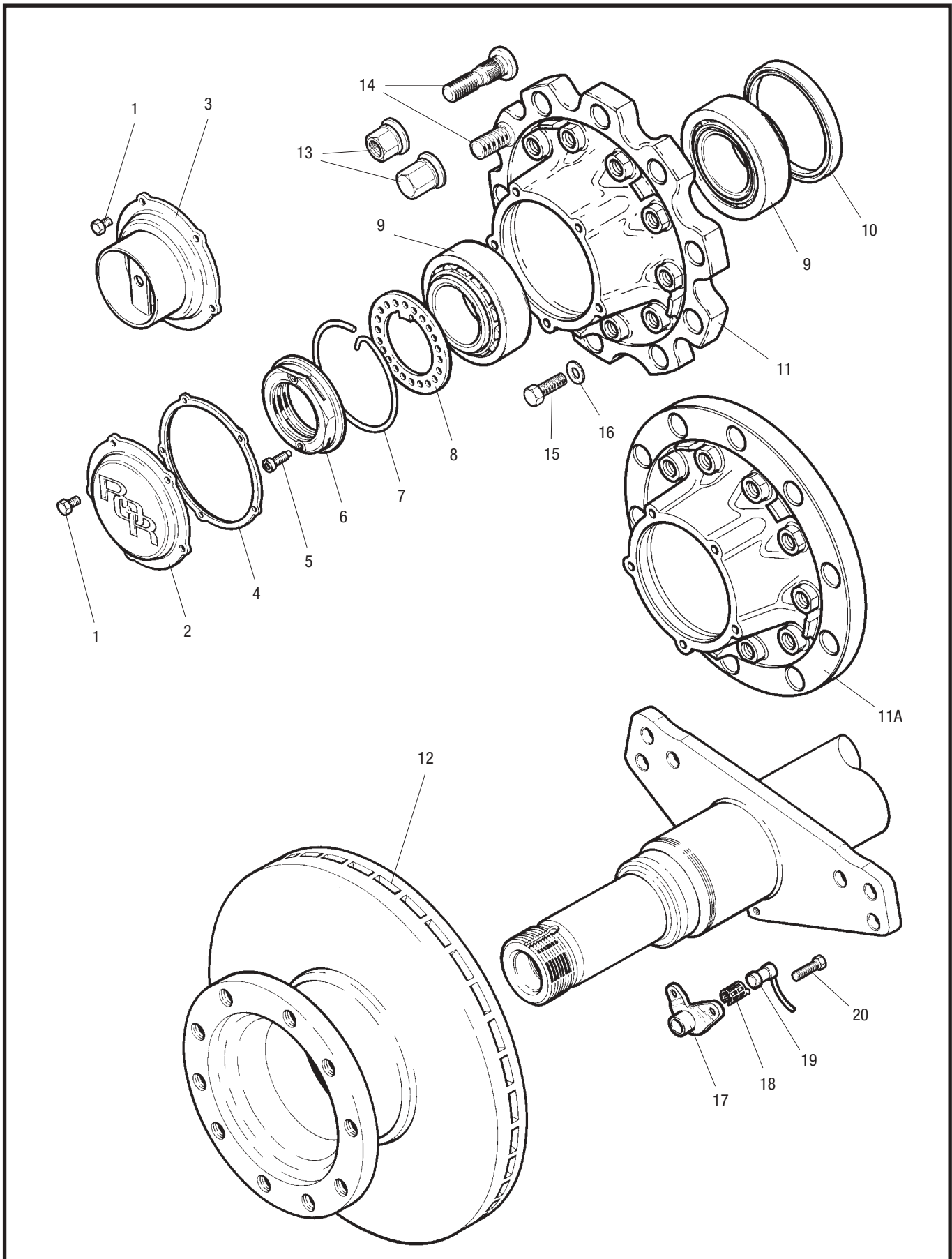


Item	Description	Part Number
1	Screw, hub cap	99543001
2	Hub cap	21226038
3	Hub cap, hubodometer	21226118
4	Gasket, hub cap	21226119
5	Axle end nut	21226032
6	Stake washer assembly	21226088
7	Auxiliary oil seal	21200321A
8	TC Hub assembly, drum brake, single & twin wheel	14226122
8A	TC Hub assembly, disc brake, twin wheel only	14226123
8B	TC Hub assembly, disc brake, single wheel only	14226493
9	Wheel nut	see table below
10	Wheel bolt, steel single & twin wheel	21226340
10	Wheel bolt, aluminium, single wheel	21226478
10	Wheel bolt, aluminium, twin wheel	21226479
11	M16 x 65 Disc mounting bolt	21225100
12	Hardened washer	21224978

WHEEL NUTS 32mm ACROSS FLATS		
NEW PART NUMBER	TYPE	FINISH COATING
21226395	STANDARD OPEN	PHOSPHATE & OIL
21226396	STANDARD OPEN	DACROMET 500 & OIL
21226397	CLOSED END	PHOSPHATE & OIL
21226484	CLOSED END	DACROMET 500 & OIL

TA & TC Parts List

TA/TC D Duco Hub, Disc and ABS Assembly



TA & TC Parts List

TA/TC D Duco Hub, Disc and ABS Assembly



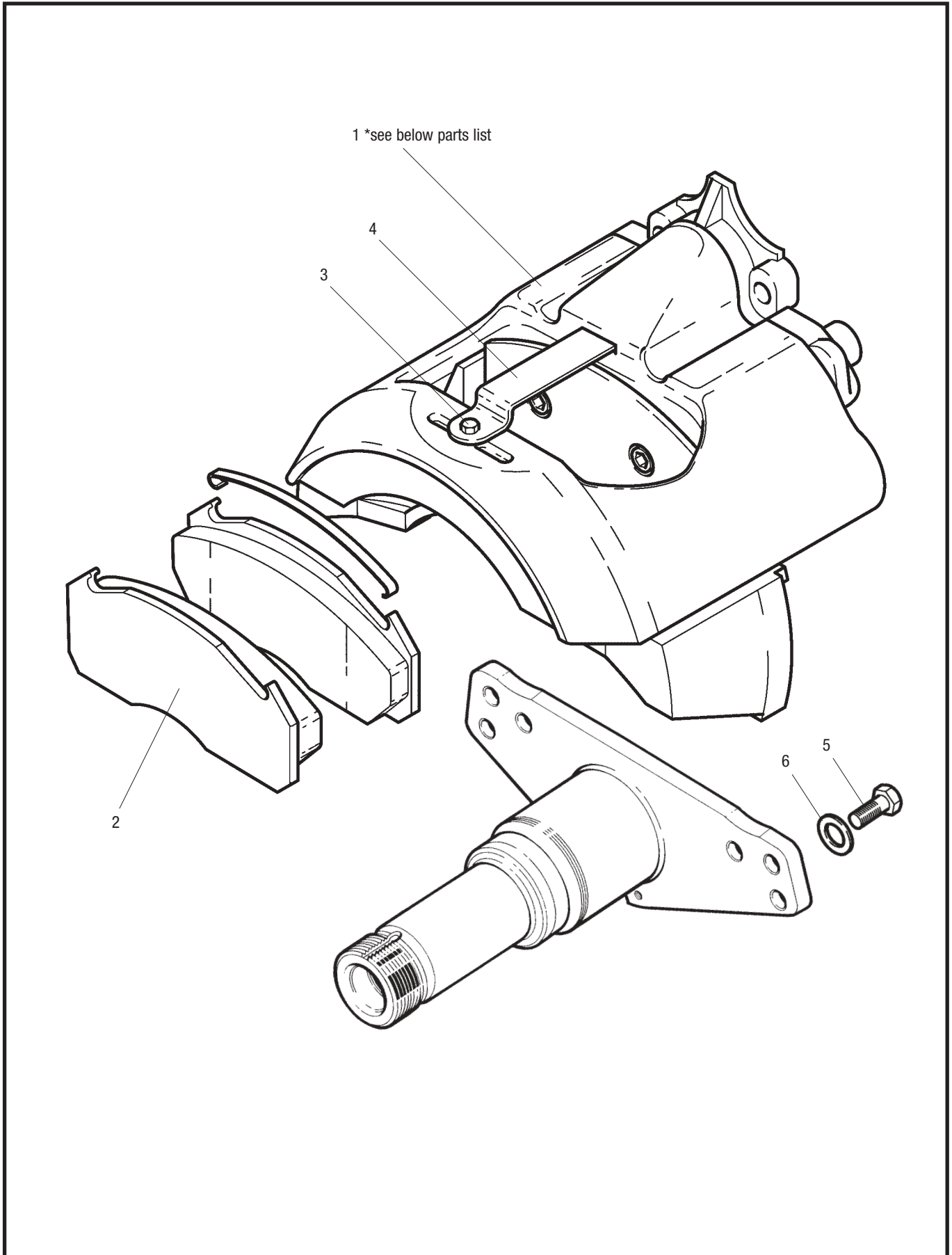
Item	Description	Part Number
1	Screw, hub cap	99543001
2	Hub cap	21226038
3	Hub cap, hubodometer	21226118
4	Gasket, hub cap	21226119
5	Screw, pinch nut	21224864
6	Pinch nut	21226003
7	Retaining clip	21226117
8	Retaining washer	21226090
9	Bearing, inner & outer	99041035S
10	Oil seal	21200321A
11	TA Hub assembly, disc brake, twin wheel only	14226121
11A	TA Hub assembly, disc brake, single wheel only	14226492
11B	TC Hub assembly, disc brake (not shown)*	-
12	Brake disc	MBR9004
13	Wheel nut	see table below
14	Wheel bolt, steel single & twin wheel	21226340
14	Wheel bolt, aluminium, single wheel	21226478
14	Wheel bolt, aluminium, twin wheel	21226479
15	M16 x 65 Disc mounting bolt	21225100
16	Hardened washer	21224978
17	Sensor block	21227415
18	Spring clip	21213036
19	Sensor	21213034
20	Screw, sensor block	99543002

*see page 13 for TC hub parts

WHEEL NUTS 32mm ACROSS FLATS		
NEW PART NUMBER	TYPE	FINISH COATING
21226395	STANDARD OPEN	PHOSPHATE & OIL
21226396	STANDARD OPEN	DACROMET 500 & OIL
21226397	CLOSED END	PHOSPHATE & OIL
21226484	CLOSED END	DACROMET 500 & OIL

TA & TC Parts List

D Duco Brake Assembly



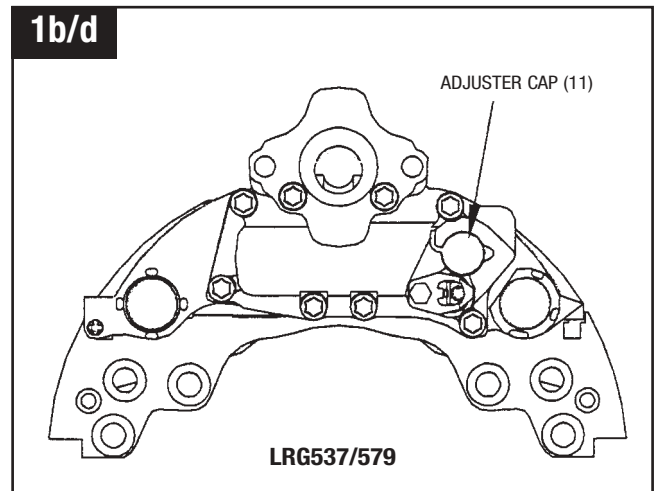
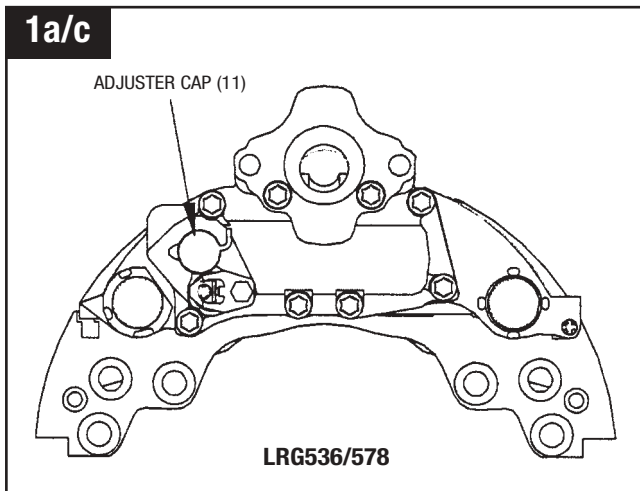
TA & TC Parts List

D Duco Brake Assembly



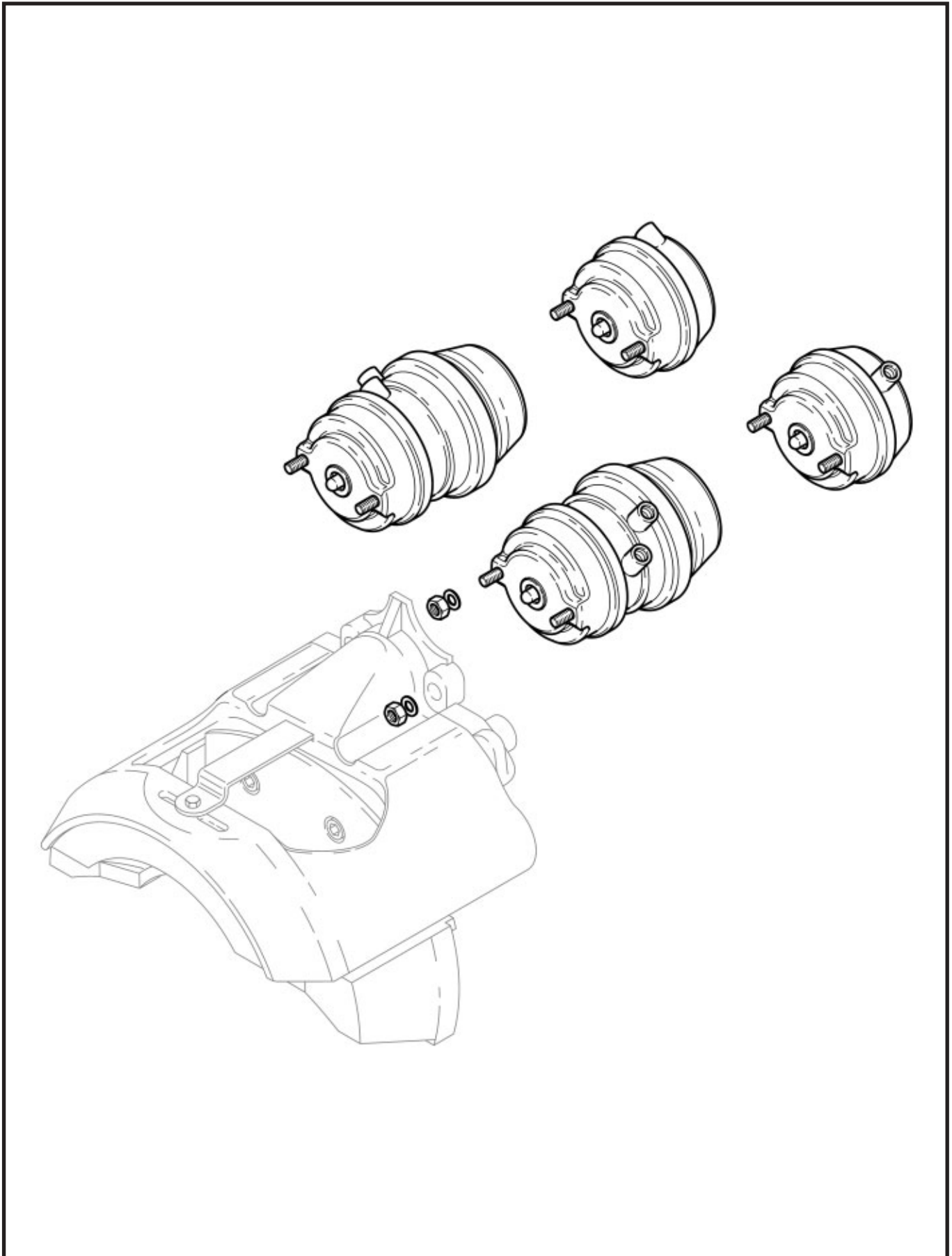
Item	Description	Part Number
1a	Brake assembly D Duco, 20mm fixing (68033116/68324518/68032959)*	LRG536
1b	Brake assembly D Duco, 20mm fixing (68033117/68324519/68032960)*	LRG537
1c	Brake assembly D Duco, 18mm fixing (68033331/68324553)*	LRG578
1d	Brake assembly D Duco, 18mm fixing (68033332/68324554)*	LRG579
2	Disc pad kit (complete with springs and pad retaining bolt)	MDP5057
3	Pad retaining bolt	68130034
4	Pad retaining plate	68322265
5	M20 x 50 Caliper mounting bolt	21226651
5	M18 x 50 Caliper flanged mounting bolt	21227433
6	Hardened washer	21226568
7	Guide pin dust cover kit (not shown)	MCK1065
8	Tappet head kit (not shown)	MCK1238
9	Guide pin bolt kit (not shown)	MCK1066
10	Tappet dust cover (not shown)	68324854
11	Adjuster stem dust cover	68322655
12a	Guide pin kit (caliper no. 68032959/60) (not shown)	MCK1134
12b	Guide pin kit (caliper no. 68033116/7) (not shown)	MCK1116

* Brake Assembly Rear View – for identification



TA & TC Parts List

D Duco Air Chamber Assembly



TA & TC Parts List

D Duco Air Chamber Assembly



Underslung Suspensions

FL11000

Chamber Size	Left Hand Side of Axle		Right Hand Side of Axle	
	Chamber Part No.	Caliper Part No.	Chamber Part No.	Caliper Part No.
14 Service	41226793	68032959	41226792	68032960
14/16	41226795	68032959	41226794	68032960
14/24	41226797	68032959	41226796	68032960
16 Service	41226799	68032959	41226798	68032960
16/16	41226801	68032959	41226800	68032960
16/24	41226803	68032959	41226802	68032960
18 Service	41226805	68032959	41226804	68032960
18/24	41226807	68032959	41226806	68032960
20 Service	41226809	68032959	41226808	68032960
20/24	41226811	68032959	41226810	68032960
22 Service	41229266	68032959	41229265	68032960
22/24	41229268	68032959	41229267	68032960
24 Service	41229270	68032959	41229269	68032960
24/24	41229272	68032959	41229271	68032960
24/30	41226821	68032959	41226820	68032960
27 Service	41226823	68032959	41226822	68032960
27/30	41226825	68032959	41226824	68032960
30/30	41226827	68032959	41226826	68032960

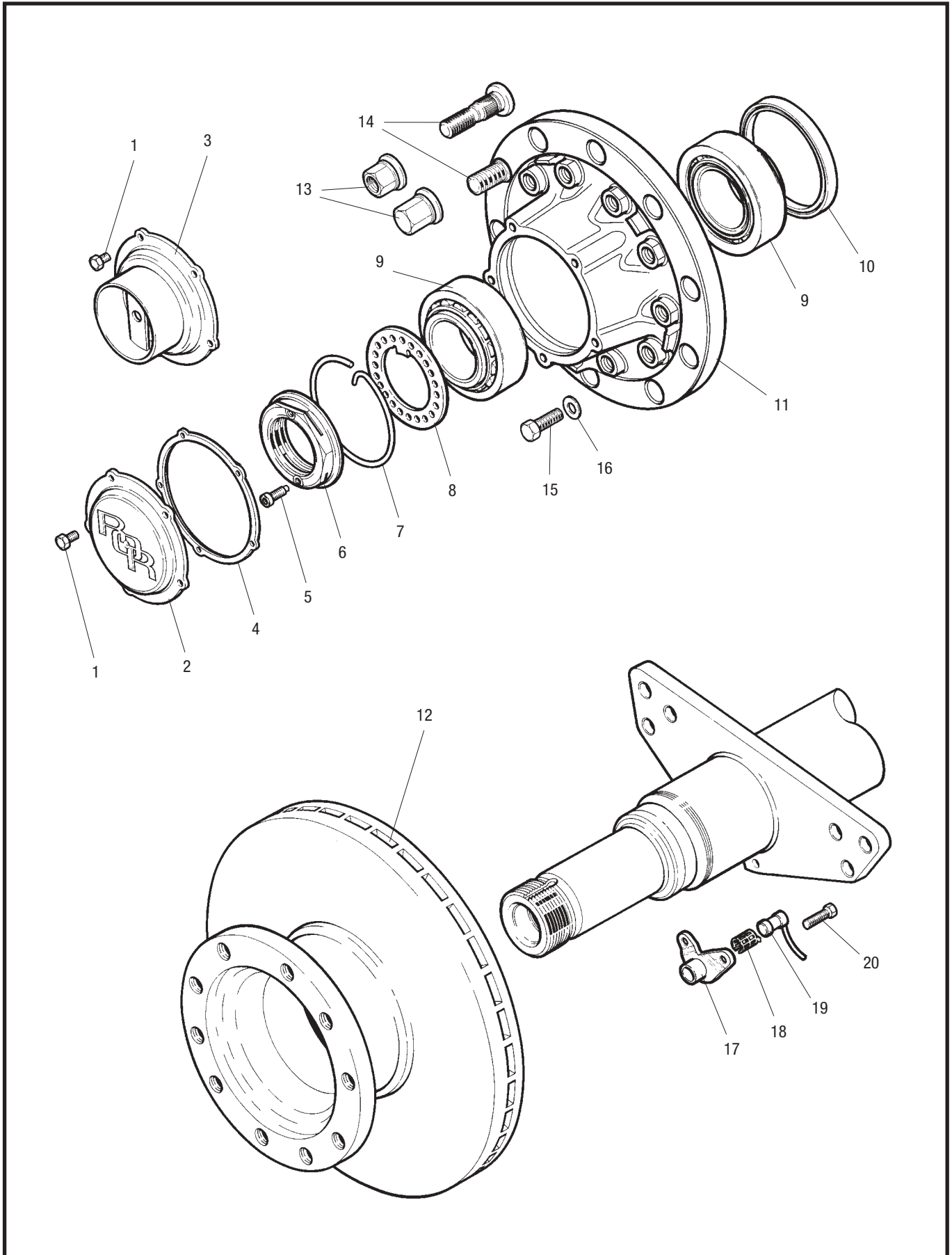
Overslung Suspensions

FL9000, FL9000NB, FL11000B

Chamber Size	Left Hand Side of Axle		Right Hand Side of Axle	
	Chamber Part No.	Caliper Part No.	Chamber Part No.	Caliper Part No.
14 Service	41226792	68032959	41226793	68032960
14/16	41226794	68032959	41226795	68032960
14/24	41226796	68032959	41226797	68032960
16 Service	41226798	68032959	41226799	68032960
16/16	41226800	68032959	41226801	68032960
16/24	41226802	68032959	41226803	68032960
18 Service	41226804	68032959	41226805	68032960
18/24	41226806	68032959	41226807	68032960
20 Service	41226808	68032959	41226809	68032960
20/24	41226810	68032959	41226811	68032960
22 Service	41229265	68032959	41229266	68032960
22/24	41229267	68032959	41229268	68032960
24 Service	41229269	68032959	41229270	68032960
24/24	41229271	68032959	41229272	68032960
24/30	41226820	68032959	41226821	68032960
27 Service	41226822	68032959	41226823	68032960
27/30	41226824	68032959	41226825	68032960
30/30	41226826	68032959	41226827	68032960

TA & TC Parts List

TA ELSA 2 Hub, Disc and ABS Assembly



TA & TC Parts List

TA ELSA 2 Hub, Disc and ABS Assembly



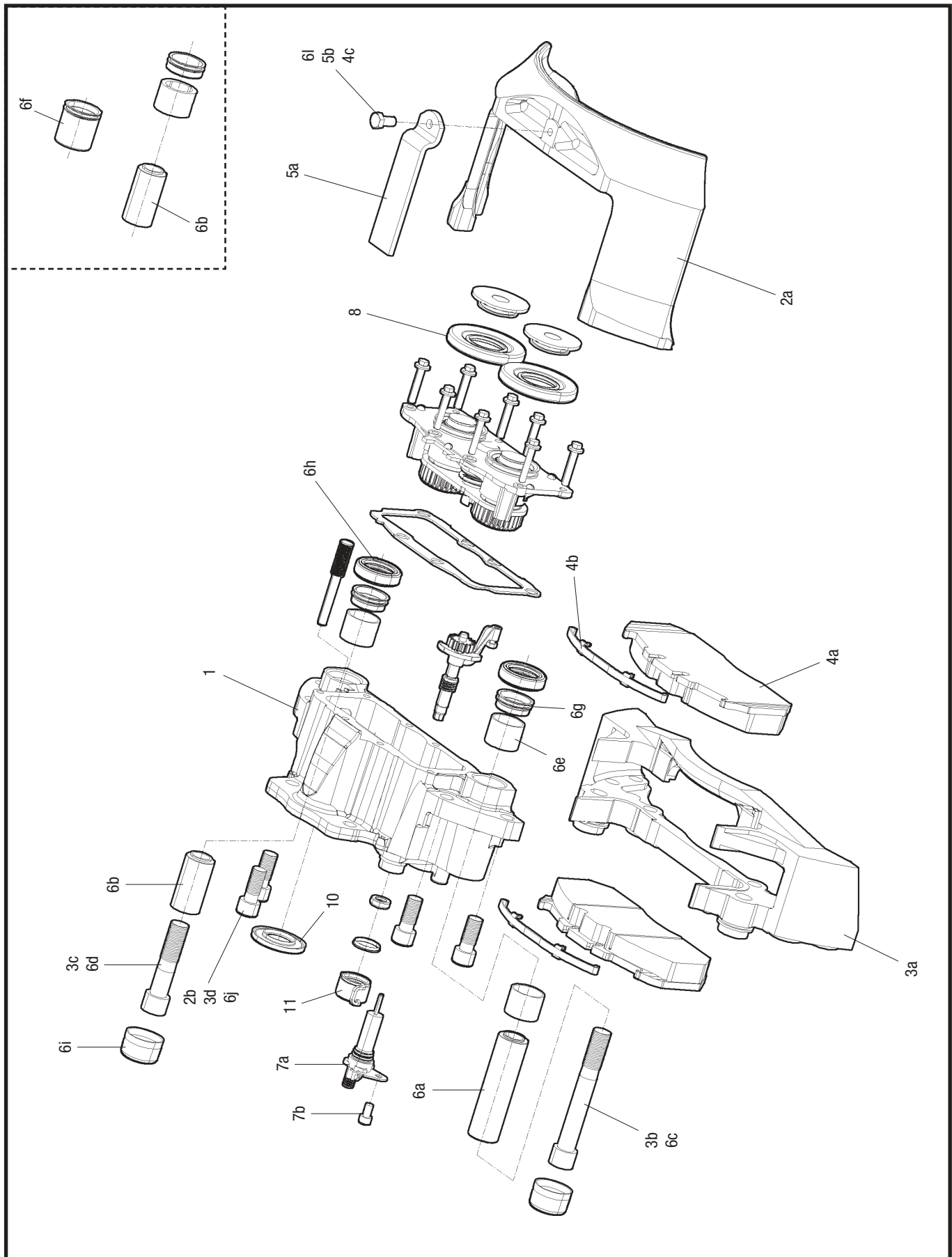
Item	Description	Part Number
1	Screw, hub cap	99543001
2	Hub cap	21226038
3	Hub cap, hubodometer	21226118
4	Gasket, hub cap	21226119
5	Screw, pinch nut	21224864
6	Pinch nut	21226003
7	Retaining clip	21226117
8	Retaining washer	21226090
9	Bearing, inner & outer	99041035S
10	Oil seal	21200321A
11	TA Hub assembly, single wheel only	14226492
11A	TC Hub assembly (not shown)*	—
12	Brake disc	MBR9004
13	Wheel nut	see table below
14	Wheel bolt, steel, single wheel	21226340
14	Wheel bolt, aluminium, single wheel	21226478
15	M16 x 65 Brake disc mounting bolt	21227263
16	Hardened washer	21224978
17	Sensor block	21227415
18	Spring clip	21213036
19	Sensor	21213034
20	Screw, sensor block	99543002

*see page 13 for TC hub parts

WHEEL NUTS 32mm ACROSS FLATS		
NEW PART NUMBER	TYPE	FINISH COATING
21226395	STANDARD OPEN	PHOSPHATE & OIL
21226396	STANDARD OPEN	DACROMET 500 & OIL
21226397	CLOSED END	PHOSPHATE & OIL
21226484	CLOSED END	DACROMET 500 & OIL

TA & TC Parts List

ELSA 2 Brake Assembly



TA & TC Parts List

ELSA 2 Brake Assembly

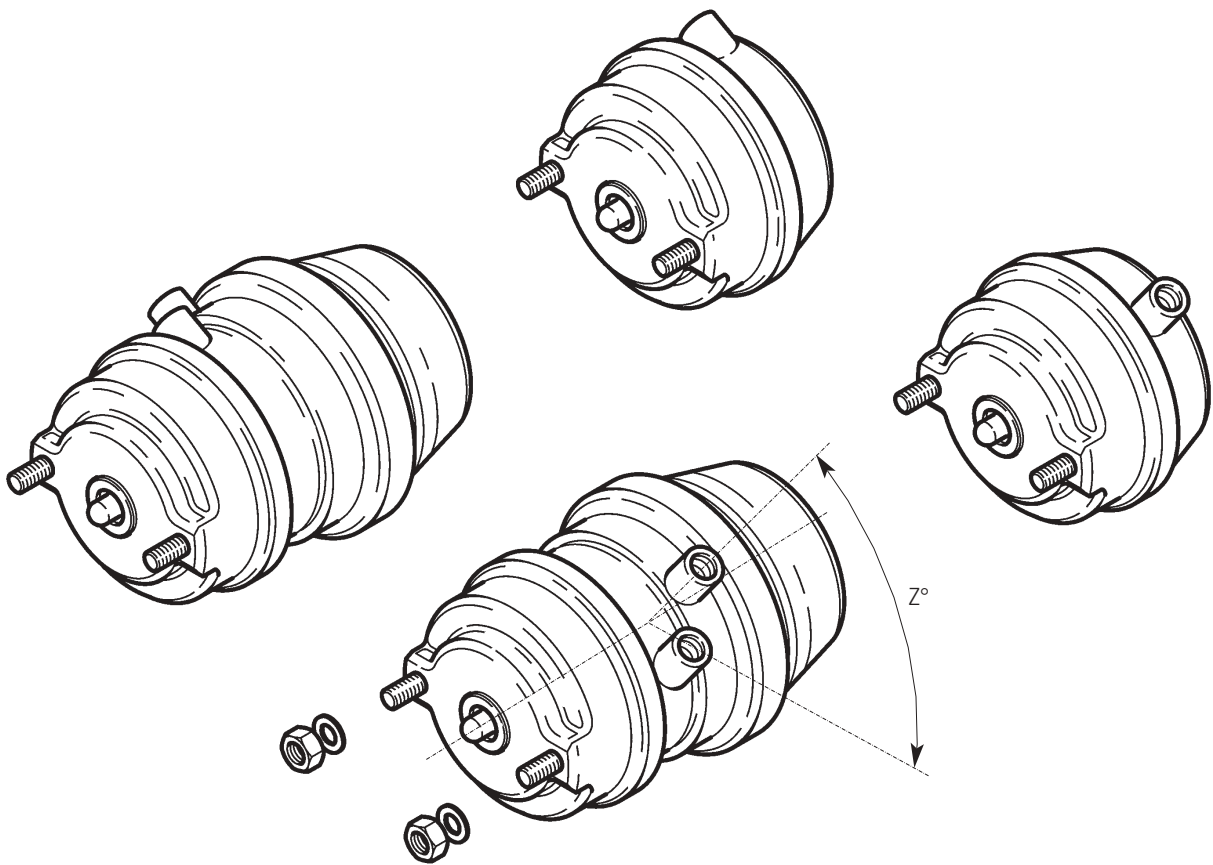


Item	Description	Part Number
1	Service caliper, RH	LRG572
1	Service caliper, LH	LRG573
3a-3d	Carrier kit	MCK1146
4a-4c	Brake pad kit	MDP5073
5a-5b	Pad retainer kit	MCK1174
6a-6j	Guide pin kit*	MCK1140
8	Tappet head kit*	MCK1139
10	Actuator seal	68323746PK10
11	Adjuster stem dust cover	68322655PK10
12	M18 x 50 Caliper flanged mounting bolt (not shown)	21227433

*includes grease (not shown)

TA & TC Parts List

ELSA 2 Air Chamber Assembly



TA & TC Parts List

ELSA 2 Air Chamber Assembly



TA and TC Single Wheel Applications

Air chamber Type	Port orientation (angle Z°)	
	45°	135°
T14	41227562	41227563
T16	41227564	41227565
T18	41227865	41227866
T20	41228284	41228285
T27	41227576	41227577
T14/24	41227566	41227567
T16/24	41227568	41227569
T18/24	41227570	41227571
T20/24	41227572	41227573
T22/24	41227574	41227575
T24/24	41227867	41227868
T27/30	41228528	41228529

TC Twin Wheel Applications

Air chamber Type	Port orientation (angle Z°)	
	45°	135°
T14	41227562	41227563
T16	41227564	41227565
T18	41227865	41227866
T20	41228284	41228285
T27	41227576	41227577
T14/24	41227566	41227567
T16/24	41227568	41227569
T18/24	41227570	41227571
T20/24	41227572	41227573
T22/24	41227574	41227575
T24/24	41227867	41227868

TA & TC Parts List

Warranty

A comprehensive network of original parts distributors and service stations operate throughout Europe; this is supported internationally with agents strategically placed around the world.

All Meritor replacement parts obtained through original parts distributors are covered by a one year warranty.

For full warranty terms and conditions see 'Meritor Warranty Terms and Conditions' Publication No 4.84.1

Meritor reserve the right to make changes in specifications shown herein or add improvements at any time without notice or obligation.

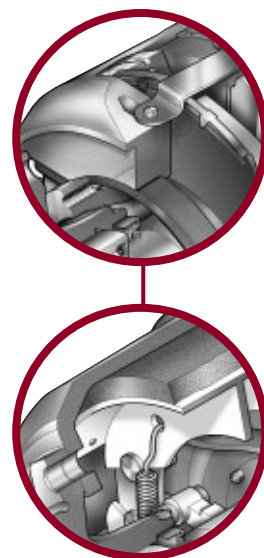
PARTS SHOWN IN THIS SPARES LIST ARE MADE FROM DRAWINGS IN WHICH COPYRIGHT SUBSISTS. THE MAKING OF COPIES OF ANY OF THESE PARTS IS PROHIBITED.

© Meritor HVS Limited

The high quality assurance management systems applied by Meritor are endorsed with the awarding of ISO 9001, Lloyd's Register Quality Assurance.

TA & TC Parts List





ArvinMeritor

Commercial Vehicle Aftermarket AG
Neugutstrasse 89
8600 Dübendorf
Switzerland
Tel: +41 (0)44 824 82 00
Fax: +41 (0)44 824 82 65

ArvinMeritor

Commercial Vehicle Aftermarket Ltd.
Park Lane, Great Alne, Alcester
Warwickshire B49 6HT
U.K.
Tel: 0845 606 7733
Fax: 0845 606 8844

www.arvinmeritor.com

Descriptions and specifications were in effect at the time of publication and are subject to change without notice or liability. Meritor reserve the right to make design improvements, change or discontinue parts at any time.

© Copyright 2004
Meritor Automotive
All rights Reserved

Issued 08-04
Publication CVA-4.94.2

ArvinMeritor™