

Experts in Bearing Solutions



Wheel Hub Units

Hub Units for Commercial Vehicle. Technical Sheets

Unidades de Buje para Vehículo Industrial. Fichas Técnicas





HUB WHEEL TRUCK

INTRODUCTION

The Fersa heavy-duty, Hub Wheel Truck (HWT), bearings are a pre-set unit, made up of two inner rings housed by a single exterior cup. Due to its precise axial clearance, the compact and maintenance free design, as well as the use of high quality grease, we manage to obtain optimum performance while supporting extremely high loads.

Our HWT guarantees quick and simple assembly of wheel hubs.

ADVANTAGES

Reduction of the number of components, implies reduction in assembly time.

Reduction of the space allocated to the bearings, hence weight reduction.

Easy to assemble, since they are already pre-set by the manufacturer.

Minimum maintenance, as it is already lubricated for life.

Low contamination risk, due to minimal handling.

Shorter axle length, hence less distortion and less misalignment.

INTRODUCCIÓN

Los rodamientos Fersa Hub Wheel Truck (HWT) son conjuntos preajustados, compuestos de 2 conjuntos interiores alojados en un solo aro exterior.

Debido a su precisa holgura axial, su diseño compacto y libre de mantenimiento y el uso de grasas de alta calidad, Fersa Bearings garantiza un óptimo funcionamiento del rodamiento a cargas elevadas.

Con nuestros rodamientos HWT se asegura el montaje rápido y sencillo en los cubos de rueda de los vehículos.

VENTAJAS

Reducción del número de componentes, lo cual implica un ahorro de tiempo en el montaje.

Disminución del espacio requerido para el rodamiento, y como consecuencia, del peso.

Sencillez del montaje, dado que el reglaje está ya fijado desde fábrica.

Mínimo mantenimiento, al estar engrasado de por vida.

Menor riesgo de contaminación, al reducir las manipulaciones.

Acortamiento de la longitud del eje, lo que disminuye la deformación y el desalineamiento.



CROSS REFERENCES / REFERENCIAS CRUZADAS

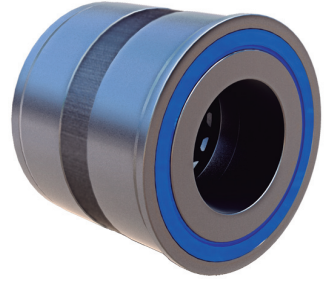
FAG	201037 / 571762.H195
SKF	BTH 0018A / VKBA 5314
TIMKEN	SET 1231 / NP 078914

OEM REFERENCES / REFERENCIAS OEM




1413785 / 1439070 / 1443078 / 1476945 / 1724482 / 1868087

POSITION / POSICIÓN

Front axle / Eje delantero



d (mm.)	D (mm.)	T (mm.)	Weight / Peso (Kg.)
68/68,2	127/132	115	6,50

BRAND / MARCA			
SCANIA	SERIE 3	93	
		113	
		143	
		K3	
		K4	
		SERIE 3	
	SERIE 4		

CROSS REFERENCES / REFERENCIAS CRUZADAS

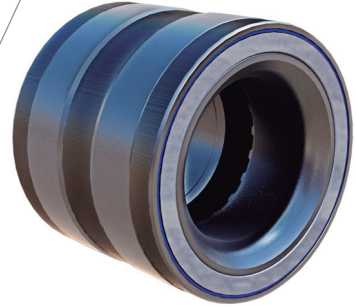
FAG	805003A.H195
SKF	BTH 0022 / BTH 0055 / VKBA 5412

OEM REFERENCES / REFERENCIAS OEM




014 981 51 05 / 014 981 93 05 / 014 981 99 05 /
017 981 50 05

POSITION / POSICIÓN

Trailer Axle / Eje de Trailer



d (mm.)	D (mm.)	T (mm.)	Weight / Peso (Kg.)
82	140	115	6,45

BRAND / MARCA			
GIGANT			D - SERIE
			G - SERIE
MERCEDES			TE
			TL
			TZ
SCHMITZ CARGOBUL			SPR
			SCS
			SKO

CROSS REFERENCES / REFERENCIAS CRUZADAS

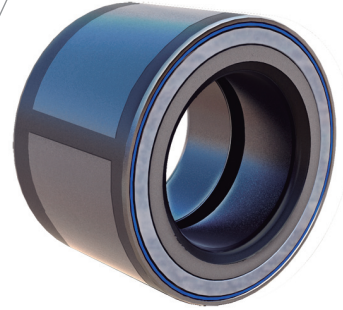
FAG	201050
KOYO	DU60108-8

OEM REFERENCES / REFERENCIAS OEM




015 981 19 05

POSITION / POSICIÓN

Front axle / Eje delantero



d (mm.)	D (mm.)	T (mm.)	Weight / Peso (Kg.)
60	108	75	2,83

BRAND / MARCA			
MERCEDES		ACTROS MP2	
		ATEGO 2	
		AXOR 2	

CROSS REFERENCES / REFERENCIAS CRUZADAS

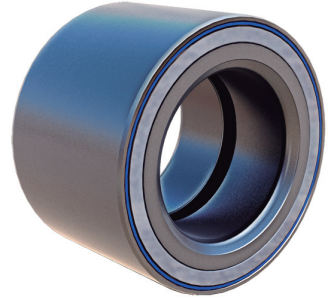
FAG	713 6908 40
SKF	BTH 1011 / VKBA 3552

OEM REFERENCES / REFERENCIAS OEM

7180066

POSITION / POSICIÓN

Rear axle / Eje trasero



d (mm.)	D (mm.)	T (mm.)	Weight / Peso (Kg.)
55	90	60	1,40

BRAND / MARCA			
IVECO		DAILY I	

CROSS REFERENCES / REFERENCIAS CRUZADAS

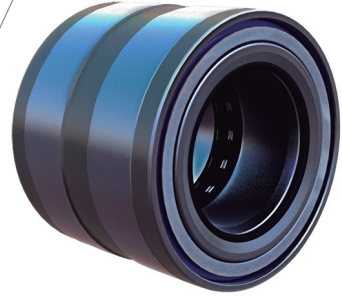
FAG	201059 / 805012.06.H195
SKF	BTH 0053 / VKBA 5397
TIMKEN	NP 318274-90UA7 / SET 1242

OEM REFERENCES / REFERENCIAS OEM




1905487 / 2996882 / 7179751 / 7183074 / 7183075 / 7189050 / 7189648

POSITION / POSICIÓN

Rear axle / Eje trasero



d (mm.)	D (mm.)	T (mm.)	Weight / Peso (Kg.)
90	160	125	10,20

BRAND / MARCA			
IVECO		EUROSTAR	
		EUROTECH	
		STRALIS	
IRISBUS	EURORIDER		

CROSS REFERENCES / REFERENCIAS CRUZADAS

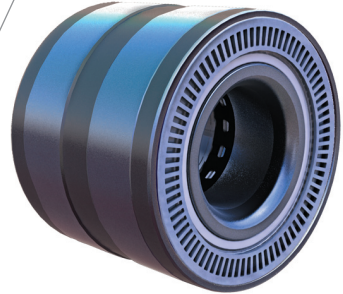
FAG	201072
SKF	VKBA 5413
TIMKEN	NP 493386

OEM REFERENCES / REFERENCIAS OEM




42537774 / 42539148

POSITION / POSICIÓN

Rear axle / Eje trasero



d (mm.)	D (mm.)	T (mm.)	Weight / Peso (Kg.)
90	160	125,5	10,50

BRAND / MARCA			
IVECO	ARWAY		
	EUROCLASS		
	EURORIDER		

CROSS REFERENCES / REFERENCIAS CRUZADAS

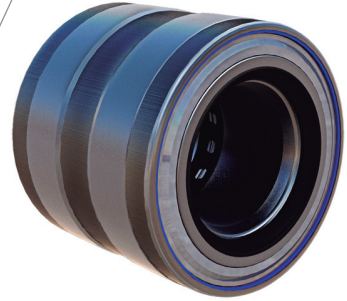
FAG 803194 A

OEM REFERENCES / REFERENCIAS OEM




013 981 22 05 / 013 981 23 05 / 013 981 98 05

POSITION / POSICIÓN

Rear axle / Eje trasero



d (mm.)	D (mm.)	T (mm.)	Weight / Peso (Kg.)
78	130	90	4,36

BRAND / MARCA			
MERCEDES		ATEGO ATEGO 2 TOURINO	

CROSS REFERENCES / REFERENCIAS CRUZADAS

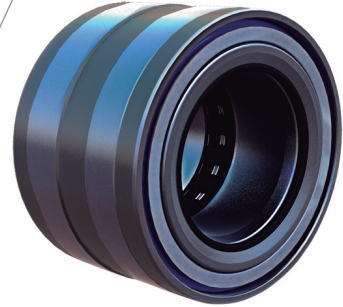
FAG	805011 C
SKF	VKBA 5409
TIMKEN	SET 1237

OEM REFERENCES / REFERENCIAS OEM




2994058 / 7184079 / 7184080

POSITION / POSICIÓN

Rear axle / Eje trasero



d (mm.)	D (mm.)	T (mm.)	Weight / Peso (Kg.)
82	140	110	6,60

BRAND / MARCA			
IVECO		EUROCARGO	
MERITOR			TC

CROSS REFERENCES / REFERENCIAS CRUZADAS

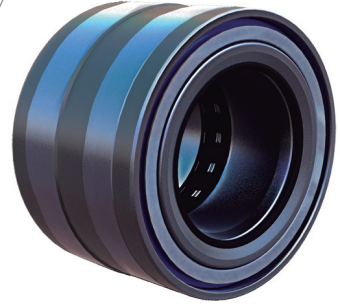
FAG	805092 C
-----	----------

OEM REFERENCES / REFERENCIAS OEM




7182915 / 81.93420-0336 / 81.93420-0379 /
81.93420-6083 / 81.93420-6099 / 8510 3257

POSITION / POSICIÓN

Rear axle / Eje trasero



d (mm.)	D (mm.)	T (mm.)	Weight / Peso (Kg.)
77	130	91	4,35

BRAND / MARCA			
IVECO	EUROPOLIS ELECTRICO	EUROCARGO	
MAN		TGL	
		TGM	
		L 2000	
VOLVO		FL6	



KIT WHEEL TRUCK

INTRODUCTION

The Fersa Kit Wheel Truck (KWT) is a high-precision pre-set unit, meant to optimize performance when used in all kinds of commercial vehicles.

The high quality grease used in the pre-greased KWT units' guarantees outstanding performance in the most extreme conditions.

INTRODUCCIÓN

Los rodamientos Fersa Kit Wheel Truck (KWT) son conjuntos de rodamientos de alta precisión, preajustados, cuyo funcionamiento es óptimo para todo tipo de aplicaciones en vehículo industrial.

Los KWT son unidades previamente engrasadas con grasa de alta calidad que garantizan su uso en las condiciones más exigentes.

ADVANTAGES

Pre-set and therefore easy to assemble.

Life lubrication requires minimum maintenance.

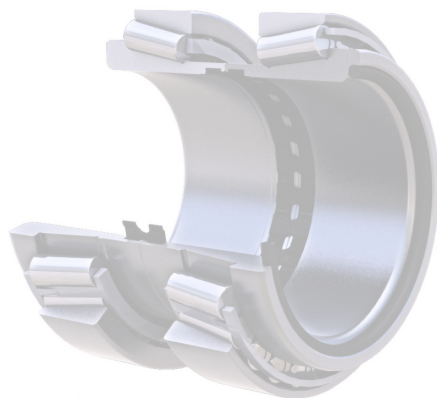
Less manipulation reduces the risk of impurities and contamination.

VENTAJAS

Sencillez del montaje, dado que el reglaje está ya fijado desde fábrica.

Mínimo mantenimiento, al venir engrasado de por vida.

Menor riesgo de impurezas, al reducir las manipulaciones.



CROSS REFERENCES / REFERENCIAS CRUZADAS

FAG 581079 C

OEM REFERENCES / REFERENCIAS OEM




3988674 / 3988675 / 20382168 / 20518092 / 20518093 /
20518637 / 20558950 / 20581399 / 20728008 /
20967831

POSITION / POSICIÓN

Front axle / Eje delantero



d (mm.)	D (mm.)	T (mm.)	Weight / Peso (Kg.)
68/68,2	125	115	4,90

BRAND / MARCA			
VOLVO	5000	FH12	
	7000	FH16	
	7500	FL6	
	7700	FM10	
	8300	FM12	
	8700	FM7	
	9700	FM9	
	9900	NH12	
	B6R		
	B9S		
	B9TL		

CROSS REFERENCES / REFERENCIAS CRUZADAS

FAG 800792 D

OEM REFERENCES / REFERENCIAS OEM




1075408 / 3988774 / 20517952 / 20518661 / 20535231 /
20558966 / 20792439 / 20792440 / 20967828 /
21036050

POSITION / POSICIÓN

Rear axle / Eje trasero



d (mm.)	D (mm.)	T (mm.)	Weight / Peso (Kg.)
93,8/94	148	135	6,00

BRAND / MARCA			
VOLVO	5000	FH12	
	7000	FH16	
	7500	FL6	
	7700	FM10	
	8300	FM12	
	8700	FM7	
	9700	FM9	
	9900	NH12	
	B6R		
	B9S		
	B9TL		

CROSS REFERENCES / REFERENCIAS CRUZADAS

FAG 803750 B

OEM REFERENCES / REFERENCIAS OEM



36934200009 / 5031 26457 / 81.93420-0320 /
81.93420-0342

POSITION / POSICIÓN

Rear axle / Eje trasero



d (mm.)	D (mm.)	T (mm.)	Weight / Peso (Kg.)
105	160	140	6,86

BRAND / MARCA			
BOVA	FUTURA		
	LEXIO		
	MAGIG		
	SINERGY		
MAN	LIONS COACH	TGA	
	LIONS CITY	TGM	
	HOCL	TGS	
	NG	TGX	
	NL	M 2000	
	NÜ		
	SL		
ÜL			
MERCEDES	CITARO		
NEOPLAN	CITYLINER		
	EUROLINER		
	STARLINER		
VOLVO	7700		
	8500		
	8700		

CROSS REFERENCES / REFERENCIAS CRUZADAS

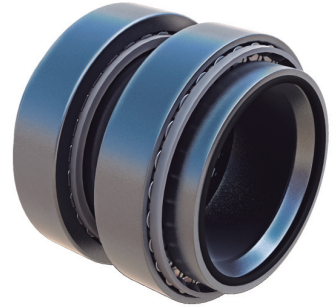
FAG	804162 A
SKF	VKBA 5416

OEM REFERENCES / REFERENCIAS OEM




81.93420-0346

POSITION / POSICIÓN

Rear axle / Eje trasero



d (mm.)	D (mm.)	T (mm.)	Weight / Peso (Kg.)
110	170	146	8,53

BRAND / MARCA			
MAN		TGA TGM TGS	

CROSS REFERENCES / REFERENCIAS CRUZADAS

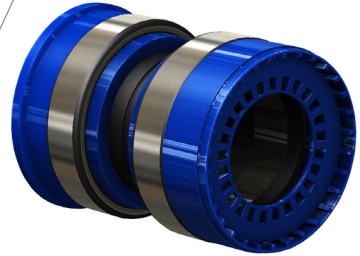
FAG 566426.H195

OEM REFERENCES / REFERENCIAS OEM




20382168 / 20518092 / 20518093 / 20518637 / 20518661 /
 20558950 / 20581399 / 20728008 / 20967831 / 21021391 /
 2051 8637 / 2096 7831 / 2102 1391 / 3988673 /
 3988674 / 3988675 / 74 20 967 831 / 74 20 518 637 /
 74 21 021 391

POSITION / POSICIÓN

Front axle / Eje delantero



d (mm.)	D (mm.)	T (mm.)	Weight / Peso (Kg.)
68/68,2	125	115	4,45

BRAND / MARCA			
RENAULT		Magnum	
		Premium 2	
		Kerax	
VOLVO	B6	FE	
	7700	FH	
	8500	FH 12	
	8700	FH 16	
	9700	FM	
	9900	FM 7	
		FM 9	
		FM 12	
		NH 12	

CROSS REFERENCES / REFERENCIAS CRUZADAS

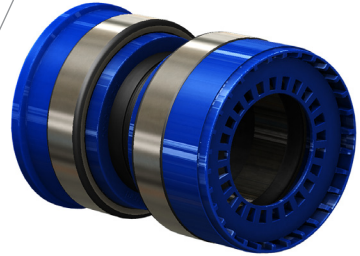
FAG 566425.H195

OEM REFERENCES / REFERENCIAS OEM




1075 408 / 20517952 / 20518661 / 20535231 / 20558966 /
20967828 / 21036050 / 2079 2439 / 2079 2440 /
2079 2440 / 3988 774 / 74 20 792 439

POSITION / POSICIÓN

Rear axle / Eje trasero



d (mm.)	D (mm.)	T (mm.)	Weight / Peso (Kg.)
93,8/94	148	135	5,40

BRAND / MARCA			
DAF		XF	
RENAULT		Magnum	
		Premium 2	
		Kerax	
VOLVO	B6	FE	
	7700	FH	
	8500	FH 12	
	8700	FH 16	
	9700	FL 6	
	9900	FL 7	
		FL 10	
		FL 12	
		FM	
		FM 7	
		FM 9	
		FM 12	
	NH 12		



COMPACT WHEEL TRUCK

INTRODUCTION

The Fersa Compact Wheel Truck bearings are bearings integrated in the wheel hub.

CWT are units made up of two perfectly aligned, lubricated for life and pre-set bearings, meeting the market's most demanding requirements. They are lubricated with the highest quality grease in order to enhance their performance under the most adverse conditions. Like the previous bearing units, their assembly is simple and practical.

ADVANTAGES

Simple assembly, direct replacement of the defective unit.

Reduction of the space allocated to the bearings, hence weight reduction.

Easy to adjust, since they are already pre-set by the manufacturer.

Minimum maintenance, as it is already lubricated for life by the manufacturer.

Low contamination risk, due to minimal handling.

Shorter axle length, hence less distortion and less misalignment.

INTRODUCCIÓN

Los rodamientos Fersa Compact Wheel Truck (CWT) son rodamientos compactos e integrados en el cubo de la rueda del vehículo.

Nuestros CWT, son unidades formadas por dos rodamientos perfectamente alineados, lubricados de por vida y preajustados para cumplir las más altas exigencias del mercado. Usamos grasa de alta calidad para asegurar su funcionamiento con las condiciones más adversas. Asegurando así mismo un montaje en la aplicación simple y práctico.

VENTAJAS

Montaje sencillo, sustitución de un conjunto por otro.

Reducción del espacio requerido para el rodamiento, y como consecuencia, del peso.

Sencillez de ajuste, dado que el reglaje está ya fijado desde fábrica.

Mínimo mantenimiento, al venir engrasado de por vida.

Menor riesgo de contaminación, al reducir las manipulaciones.

Acortamiento de la longitud del eje, lo que disminuye la deformación y el desalineamiento.



CROSS REFERENCES / REFERENCIAS CRUZADAS

FAG 564734.H195

OEM REFERENCES / REFERENCIAS OEM

1002689 / 1003457 / 100167600 / 100167601 /
3 200 2001 51 / 3 434 3650 00 / 4 200 2001 00 /
4 200 2001 01




POSITION / POSICIÓN

Trailer axle / Eje Trailer



Sold with 12 nuts / Incluye 12 tornillos

d (mm.)	D (mm.)	T (mm.)	Weight / Peso (Kg.)
82	196	110	15,30

BRAND / MARCA			
SAF			9019-1122
SCHMITZ CARGOBUL			SKI
			SPR
			SCS
			SKO

CROSS REFERENCES / REFERENCIAS CRUZADAS

FAG	201042
SNR	HDS 002

OEM REFERENCES / REFERENCIAS OEM

5010566154

POSITION / POSICIÓN

Front axle / Eje delantero



d (mm.)	D (mm.)	T (mm.)	Weight / Peso (Kg.)
50	140	-	-

BRAND / MARCA			
RENAULT		MIDLUM	

CROSS REFERENCES / REFERENCIAS CRUZADAS

FAG	201043
SNR	HDS 001

OEM REFERENCES / REFERENCIAS OEM




5010439770

POSITION / POSICIÓN

Front axle / Eje delantero



d (mm.)	D (mm.)	T (mm.)	Weight / Peso (Kg.)
70	194	112	-

BRAND / MARCA			
RENAULT		KERAX	
		MAGNUM	
		PREMIUM	

CROSS REFERENCES / REFERENCIAS CRUZADAS

FAG	201044
SKF	VKBA 5308

OEM REFERENCES / REFERENCIAS OEM




50 10 216 920 / 74 20 879 770

POSITION / POSICIÓN

Front axle / Eje delantero



d (mm.)	D (mm.)	T (mm.)	Weight / Peso (Kg.)
65	194	113	11,87

BRAND / MARCA			
RENAULT		KERAX	
		MAGNUM	
		MAJOR	
		MAXTER	
		PREMIUM	

CROSS REFERENCES / REFERENCIAS CRUZADAS

FAG	801974AE.H195
SKF	BTF 0110 / VKBA 5377

OEM REFERENCES / REFERENCIAS OEM




42541578 / 5006207845 / 81.93420-0288 /
81.93420-0330 / 81.93420-0349

POSITION / POSICIÓN

Front axle / Eje delantero



d (mm.)	D (mm.)	T (mm.)	Weight / Peso (Kg.)
70	196	140	13,20

BRAND / MARCA			
IVECO	CITYCLASS		
	EUROPOLIS		
MAN	HOCL	TGA	
	LIONS COACH	TGM	
	LIONS CITY	TGS	
	LIONS STAR	TGX	
	NG	E 2000	
	NL	F 2000	
	NM	M 2000	
	NÜ		
	RH		
	SG		
	SL		
	SÜ		
	TOURLINER		
ÜL			
UN			

CROSS REFERENCES / REFERENCIAS CRUZADAS

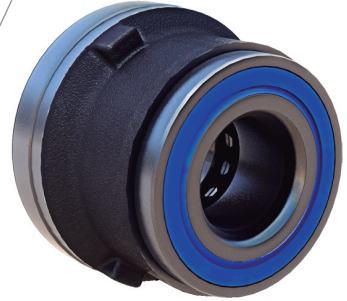
FAG	713 6908 50
SKF	VKBA 3553

OEM REFERENCES / REFERENCIAS OEM

9381 0034

POSITION / POSICIÓN

Front axle / Eje delantero



d (mm.)	D (mm.)	T (mm.)	Weight / Peso (Kg.)
45	120	85	4,00

BRAND / MARCA			
IVECO		DAILY i	

CROSS REFERENCES / REFERENCIAS CRUZADAS

FAG 805532

OEM REFERENCES / REFERENCIAS OEM

20550678 / 5010587029

POSITION / POSICIÓN

Front axle / Eje delantero



d (mm.)	D (mm.)	T (mm.)	Weight / Peso (Kg.)
60	168	100	9,30

BRAND / MARCA			
RENAULT		MIDLUM	

Hub Units for Commercial Vehicle 2nd ed.
Unidades de buje para Vehículo Industrial 2^o ed.

FBV2.2.0712



Fersa Bearings, S.A.

Calle Bari, 18 - PLAZA
50.197 Zaragoza - SPAIN

T_ +34 976 333 850

F_ +34 976 348 935

fersa@fersa.com

www.fersa.com

