

## **DaimlerChrysler AG**

### **Trailer Axle Systems**

HPC 990A

Mercedesplatz 1

34127 Kassel, Germany

phone +49 (0)561 802-2078

fax +49 (0)561 802-2164

e-mail andreas.siebert@daimlerchrysler.com

## **Region Benelux**

DaimlerChrysler AG

Trailer Axle Systems

Masterode 2

5709HX, Helmond, The Netherlands

phone +31 (0) 6-20 100 354

e-mail arjen.mens@daimlerchrysler.com

## **Region Eastern Europe**

DaimlerChrysler AG

Trailer Axle Systems

ul. Małej Łąki 34

02-793 Warsaw, Poland

phone +48 (0) 228 59 12-60

fax +48 (0) 228 59 12-59

e-mail grzegorz.krakowski@daimlerchrysler.com

## **Sales Office Northern Europe**

DaimlerChrysler AG

Trailer Axle Systems

4, Chantry Court, Sovereign Way

CH1 4QN Chester, England

phone +44 (0)1244 394-220

fax +44 (0)1244 394-224

e-mail karin.donelly@daimlerchrysler.com

## **Sales Office Southern Europe**

Discos Southern Europe SAS

Une société du Groupe DaimlerChrysler

Immeuble Le Rio

11 Font de la Banquière

34970 Lattes, France

phone +33 (0)499 1337-37

fax +33 (0)499 1337-30

e-mail isabelle.laval@discos-se.com

DaimlerChrysler AG

Trailer Axle Systems

Via Sommacampagna 61

Cassetta Postale 15

37137 Verona, Italy

phone +39 045 8623-077

fax +39 045 8646-325

e-mail daimlerchrysler@quadranteuropa.it

DaimlerChrysler AG

Trailer Axle Systems

Apartado de correos: 114

28500 Madrid, Spain

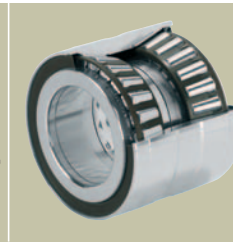
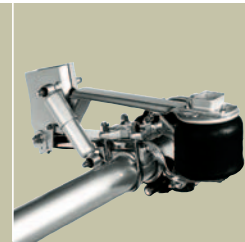
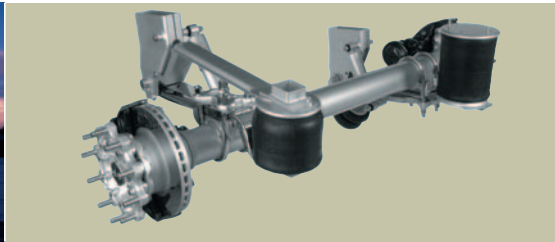
phone +34 (0)918 732-719

fax +34 (0)918 732-941

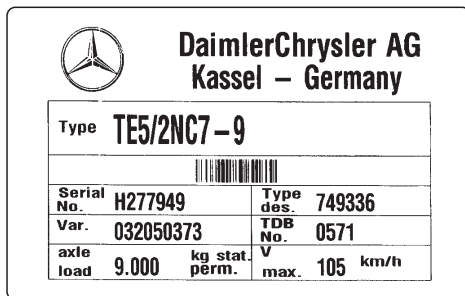
e-mail francisco.alonso@daimlerchrysler.com

[www.traileraxlesystems.daimlerchrysler.com](http://www.traileraxlesystems.daimlerchrysler.com)

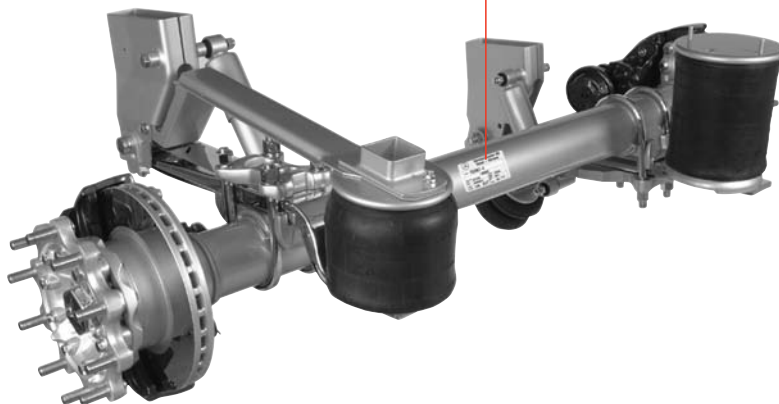
# DAIMLERCHRYSLER



## Operating Instructions and Maintenance Specifications for Trailer Axles featuring DLS Air-Suspension Systems



The ID plate can be found on the centre of the axle housing.



### Vehicle data

Vehicle manufacturer	
Address	
Vehicle model	
Chassis no.	
Delivery	
Registration	
Axle model	
Air-suspension type (order code/ride height)	
Axle numbers	

# Table of contents

<b>Introduction</b>	4	<b>Axle system</b>	
		- Axle models TL4/1 and TL5/1	20 - 21
<b>Notes</b>		<b>Air suspension</b>	
- Model designations	4	- Ride height 450	22
- MB data systems (WIS/EPC)	5	- Ride height 390	23
- Warranty	6	- Ride height 355/Ride height 405	24
- Welding instructions/brake system	7	- Ride height 215/Ride height 290	25
- Checking brake lining thickness	8 - 9	- Ride height 330	26
		- Ride height 250/Ride height 300	27
<b>Maintenance specifications</b>		- Ride height 280/Ride height 330	28
- Axle models TZ5/2 and TZ3/2 with conventional bearing	10	- Ride height 375/Ride height 425	29
- Axle models TE5/2, TE4/2, TZ5/4 and TZ4/2 with compact bearing	11	- Ride height 385/Ride height 335/Ride height 360	30
		- Ride height 410	31
<b>Wheel bearings</b>		- Ride height 485/Ride height 535	32
- Axle models TE5/2, TE4/2 (9 t / offset 120), TL5/1 and TL4/1 with compact bearing	12	- Dual-side lift, "bolt on" version	33
- Axle models TZ5/4 and TZ4/2 (9t / offset 0) with compact bearing	13	- Dual-side lift, "pivoted" version	34
- Twin-wheel axle models TZ5/2 and TZ3/2 (10.5 t/offset 0) with conventional bearing	14	<b>Technical information</b>	
		- Axle tracking	35
<b>Brakes</b>		- Tightening torques	36 - 37
- Brake cylinder	15	- Inspections and maintenance	38
- Disc brake 22.5", manufactured by Knorr, SN7	16 - 17	- Tools	39
- Disc brake 19.5", manufactured by Knorr, SN6	16 - 17	<b>Maintenance work</b>	40 - 46
- Disc brake 22.5", manufactured by Knorr, SK7	18 - 19		

## Introduction

This maintenance booklet is intended to serve as a guideline for performing maintenance work on your axle. Always perform the work specified by us when it is due to maintain operating reliability. Our axles are subject to continuous development. Please appreciate that the maintenance scopes may change due to technical modifications. Any maintenance work due and inspections prescribed at certain intervals by law (in Germany, for example, Section 29 of the StVZO Road Transport Licensing Regulations) can be performed individually or together, depending on what is better for the individual company.

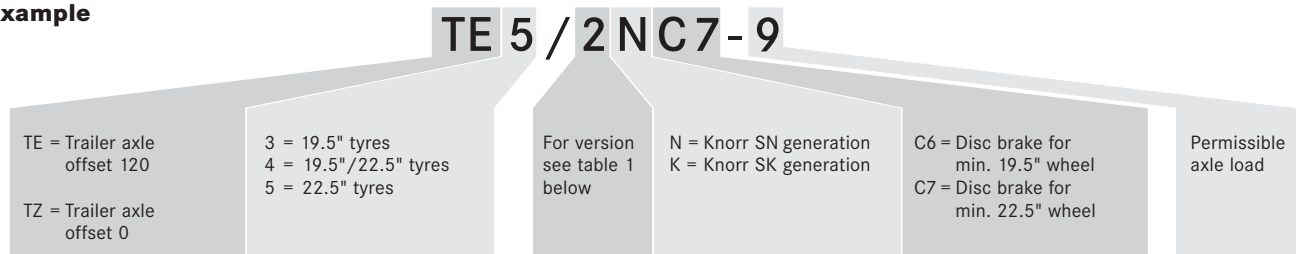
In order to offer the most favourable scope of work, it is possible to select between:

- Complete maintenance
- Maintenance excluding those items which are covered by the intermediate and main inspections.

The "daily vehicle check" before starting a journey is one of the driver's obligations and is described in the vehicle Operating Instructions.

## Model designations for trailer and semi-trailer axles

### Example



**Table 1: Version description**

Basic model	Version	Bearing type	Axle tube
TZ 3	2	Single	Ø146x12
TE 4	2	Compact	Ø146x9.5
	3	Compact	Ø146x12
TL 4	1	Compact	Ø146x17
TZ 4	2	Compact	Ø146x9.5
	3	Compact	Ø146x12

Basic model	Version	Bearing type	Axle tube
TE 5	2	Compact	Ø146x9.5
	3	Compact	Ø146x12
TL 5	1	Compact	Ø146x17
TZ 5	2	Single	Ø146x12
	3	Compact	Ø146x12
	4	Compact	Ø146x9.5

# Information in the data systems (WIS/EPC) at MB Service Stations

## Data card for trailer axle systems:

In order for the necessary parts to be clearly identified, the installed components (SAA - optional equipment versions) must be determined with FDOK using the axle end no. (1) entered on the ID plate.

### Example:

The number stated on the ID plate (for example, H277949 as shown here), is entered in the column for the axle end no. in the FDOK 3100 entry screen. Pressing the Enter key then calls up the basic data for the corresponding axle system in the 3112 screen. Pressing the PF6 function key displays an overview of the items of optional equipment which are installed.

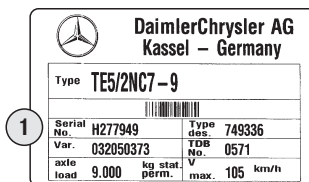
### Part identification:

When you reach the start screen of the EPC System (directly after entering the WDB vehicle ident. end no.), enter the axle model no. - e.g. 749334 - stated on the ID plate or in the FDOK data card. A list of parts for this axle model will now be displayed.

In the case of components fitted as an option, the validity must be checked against the FDOK data so that the parts can be clearly identified.

### Repair instructions:

Instructions for carrying out repairs to DaimlerChrysler axle systems can be found in the **WIS System** by entering the



‘dummy’ vehicle ident. end no WDB000001, and then selecting the corresponding axle system on the right-hand side under “Major Assembly”. You can then view the relevant documents by selecting the menu options

“Documentation” and “Selection of test and repair operations”. The model designation can again be read off the data card or the ID plate.

Alternatively, you can retrieve the required repair instructions via the “Table of contents” and the following sub-directories:



- > AR (test and repair work)
- > Truck
- > Rear axle
- > Rear axle 749
- Suspension (air suspension)
- Rear axle (axle)
- Brakes (brake)

You can also find this information at:

[www.traileraxlesystems.daimlerchrysler.com](http://www.traileraxlesystems.daimlerchrysler.com)

# Warranty

An extensive network of Mercedes-Benz Service Stations is available to perform the maintenance work for you. Thanks to their equipment, tools, specially trained personnel, experience and regular technical training by the plant, all of these workshops ensure that your axle will be checked and serviced properly, thoroughly and in line with the latest practices. Warranty claims for DaimlerChrysler products can be filed with any authorised Mercedes-Benz Service Station.

If you have any questions concerning the warranty, please contact the service department at:

## **D, B, NL, A, CH**

- phone +49 (0)561 802-2078
- fax +49 (0)561 802-2164

## **UK**

- phone +44 (0)1244 394-220
- fax +44 (0)1244 394-224

## **F, E, P, I**

- phone +33 (0)499 1337-37
- fax +33 (0)499 1337-30

Please follow the instructions in this maintenance booklet and ensure that they are also observed when a third party is responsible for use and care of the vehicle. Only in this manner can you ensure that your warranty remains valid. If maintenance services during the warranty period are not performed regularly or when they are due, or are not performed by an authorised workshop, a decision can only be made regarding warranty claims once an analysis report from the manufacturer is available.

Special lubricant additives are not required. The use of special additives and non-approved spare parts may limit the scope of the warranty.

No legal rights can be derived from the contents of these Operating Instructions.

# Welding instructions

Axle parts and parts of the wheel brakes are safety-critical parts. For this reason, the following work is in principle not permissible:

- Welding
- Build-up welding
- Heating and straightening
- Hard chrome plating
- Other similar work.

Such work can result in tension cracks which cannot be detected externally, but which can lead to fractures and accident damage. Any welding work required is subject to approval and must be agreed with DaimlerChrysler AG first.

## Brake system

### Release of the spring-loaded parking brake with insufficient supply pressure in the brake system

In emergencies or in the workshop, the spring-loaded parking brake can be released mechanically or pneumatically.

**Caution! Risk of accident.**

- **Before releasing the spring-loaded parking brake:**  
**Ensure that the vehicle cannot roll away.**
- **Before starting up vehicle:**  
**Ensure that spring-loaded parking brake is in a proper operational state.**  
**Apply parking brake.**

### Mechanical release

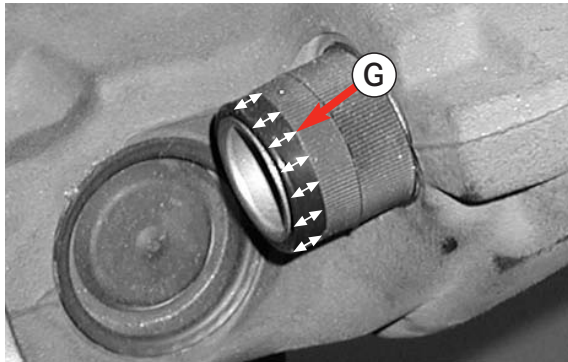
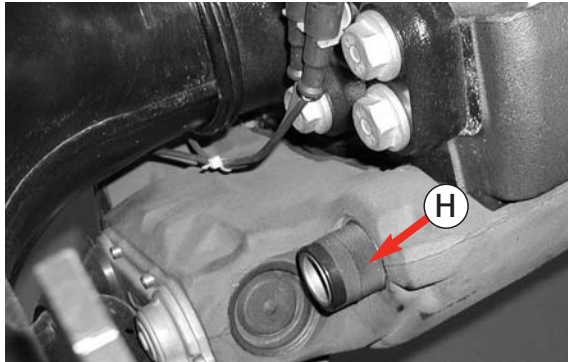
- Screw release screws out to stop (released position).  
**Caution! Release torque max. 70 Nm**  
(do not use an impact screwdriver)

To return spring-loaded parking brake to an operational state:

- Fill the brake system up to switch-off pressure
- Move the lever on the parking brake valve to the released position
- Completely screw in and tighten release screws (braked position)  
Tightening torque 40-50 Nm

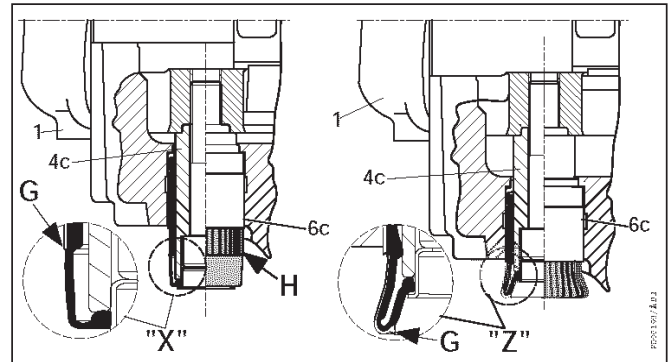


# Checking brake lining thickness



## Checking brake lining wear with brake still fitted (SN6 / SN7):

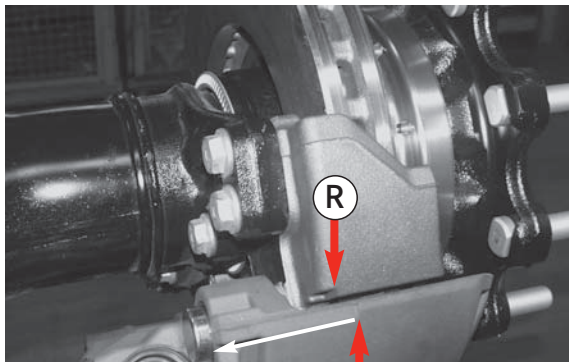
On all axial and radial disc brakes with a guide sleeve which is grooved along its length (see arrow H).



The brake lining thickness can be checked with the wheels still fitted by examining the position of the edge "G" (transition point between the grooved and the smooth section).

State "X" shows the position of the wear mark "G" on the guide sleeve (6c) when the brake linings are **new**. The smooth section in front of the wear edge "G" is fully visible.

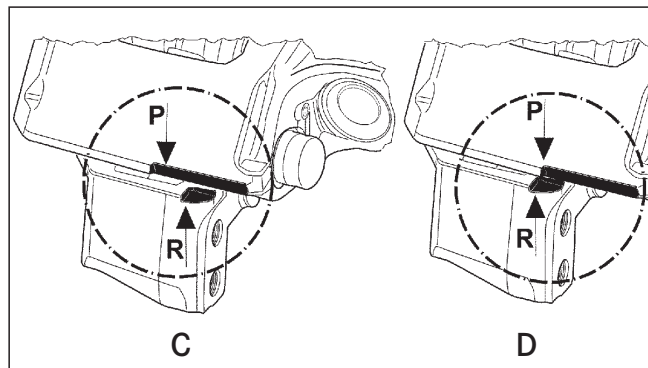
State "Z" shows the position of the wear mark "G" when the guide sleeve (6c) has rolled up, indicating that the **wear limit** has been reached. The smooth section in front of the wear edge "G" can no longer be seen. If this limit has been reached, the brake lining thickness and brake disc have to be checked again with the wheels removed. If necessary, replace the brake linings and/or the brake disc in accordance with the vehicle manufacturer's instructions.



Movement of the  
brake calliper if  
worn

### Checking brake lining wear with brake still fitted (SK7):

On all disc brakes with calliper and brake carrier markings (see arrows P and R).



The brake lining thickness can be checked with the wheels still fitted by examining the position of the brake calliper marking (P) in relation to the fixed brake carrier marking (R).

If state "D" is reached then the brake lining thickness and brake disc have to be checked again with the wheels removed.

If necessary, replace the brake linings and/or the brake disc in accordance with the vehicle manufacturer's instructions.

**C** = new condition

**D** = brake lining and brake discs have to be checked with the wheels removed.

## Maintenance specifications

# Axle models TZ5/2 and TZ3/2 with conventional bearing

### Maintenance work

**Caution:** always retighten wheel nuts to the specified tightening torque after 50 km (this also applies following each wheel change).

### Wheel bearings

Re-pack wheel bearings with new grease every 300,000 km or 24 months. Check tapered roller bearings when repacking for re-usability, adjust wheel-bearing play and replace hub seal.

### Visual check and safety tests

- Check chassis parts *annually* for wear, leakage and damage.
- Check brake lining wear regularly (when checking tyre pressure, for example)
- Check brake callipers *annually* for free movement (sliding), check external sealing boots of bolt guide for leakage.

General annual safety test e.g. automatic load-dependent brake-power distribution, tractor/trailer brake force distribution. If the tractor vehicle has been changed or has a different braking system from the trailer it is towing, the tractor/trailer brake force distribution must be adjusted. If the brake discs or linings are replaced, check the inner bellows of the brake calliper and replace if necessary.

### Conditions of use

- **Vehicles with low mileage:**  
Perform maintenance based on time intervals
- **Vehicles operating under extreme conditions:**  
Reduce maintenance intervals accordingly

### Adjusting wheel-bearing play

**Initial tightening torque** Axle nut 240 Nm whilst turning the wheel hub through one rotation.

### Bearing play

**TZ5/2**

Set to 0.02-0.04 mm

**TZ3/2**

Tighten counter-nut to 380 Nm, and secure with tab washer

### Service-product specifications

- For air springs and brass bushes: Renolit HLT2
- For rubber guide sleeve (70.3): Syntheso GL EPI
- For axle stub: DC assembly paste, wheel-bearing grease (part no. A 000 989 63 51)

# Axle models TE5/2, TE4/2, TZ5/4 and TZ4/2 with compact bearing

## Maintenance work

**Caution:** always retighten wheel nuts to the specified tightening torque after 50 km (this also applies following each wheel change).

## Maintenance-free compact bearings

Visually check for signs of wear (e.g. grease leakage) each time the brake discs are replaced.

**Note:** the sealing system may become damaged by the brakes overheating.

## Visual check and safety tests

- Check chassis parts *annually* for wear, leakage and damage.
- Check brake lining wear regularly (when checking tyre pressure, for example)
- Check brake callipers *annually* for free movement (sliding), check external sealing boots of bolt guide for leakage.

General annual safety test e.g. automatic load-dependent brake-power distribution, tractor/trailer brake force distribution. If the tractor vehicle has been changed or has a different braking system from the trailer it is towing, the tractor/trailer brake force distribution must be adjusted. If the brake discs or linings are replaced, check the inner bellows of the brake calliper and replace if necessary.

## Conditions of use

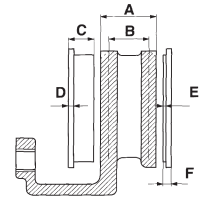
- **Vehicles with low mileage:**  
Perform maintenance based on time intervals
- **Vehicles operating under extreme conditions:**  
Reduce maintenance intervals accordingly

## Axle nut (= hex. collar nut M80x1.5)

- Tighten axle end nut to 700 Nm torque whilst turning the wheel hub through one rotation.
- Use appropriate service tool (W 749 589 00 09 00) to secure the axle nut. Bend the rim of the axle end nut into the keyway on the axle spindle.

## Service-product specifications

- Brake callipers/air springs and brass bushings:  
Renolit HLT2
- Brake callipers/rubber guide sleeve (70.3):  
Syntheso GL EPI
- Bearing seat/axle stub:  
DC assembly paste (A 000 989 80 51 10)

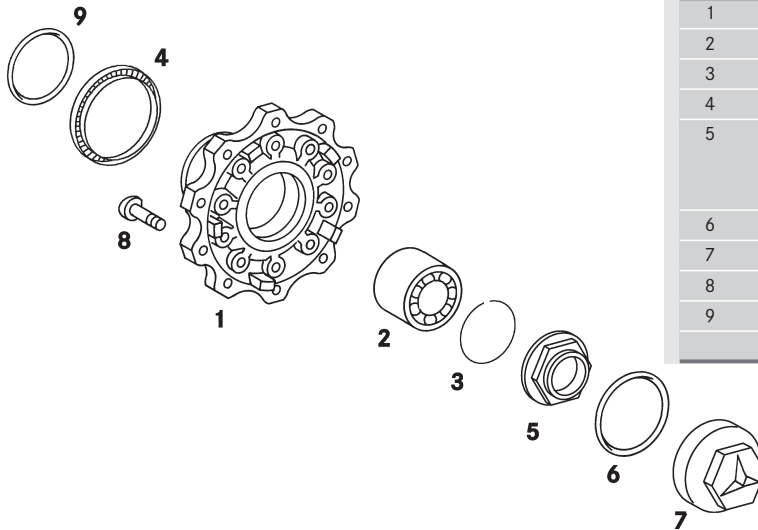


Technical data	Brake model	Brake model	Brake model
	SN6 19.5"	SN7 22.5"	SK7 22.5"
A Disc thickness	45 mm	45 mm	45 mm
B Disc wear limit	≤ 37 mm	≤ 37 mm	≤ 37 mm
C Lining thickness	30 mm	30 mm	30 mm
D Backing plate	9 mm	9 mm	7 mm
E Remaining lining thickness	2 mm	2 mm	2 mm
F Absolute minimum thickness	11 mm	11 mm	9 mm
Disc diameter	370 mm	430 mm	430 mm
No. of brake linings/axle	4	4	4

## Wheel bearings

# Axle models TE5/2, TE4/2 (9t/offset 120), TL5/1 and TL4/1 with compact bearing

### Parts illustration

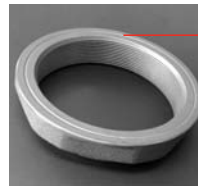


### Parts list

Item no.	Part description	Part no.
1	Wheel hub	A 000 350 05 35
2	Tapered roller bearing unit	} available only as complete set incl. items 3, 6 & 9
3	Retaining clip	
4	Pole wheel - 90 tooth	
5	Hex. Collar Nut M80x1.5	
	with RH thread (right side of vehicle)	A 970 990 00 50
	with LH thread (left side of vehicle)	A 970 990 01 50
6	O-ring	A 027 997 88 48
7	Hub cap	A 946 356 04 20
8	Wheel bolt M22x1.5x80	A 389 401 00 71
9	O-ring (from H240235)	A 029 997 97 48
	Wheel nut (not illustrated)	A 000 401 06 72



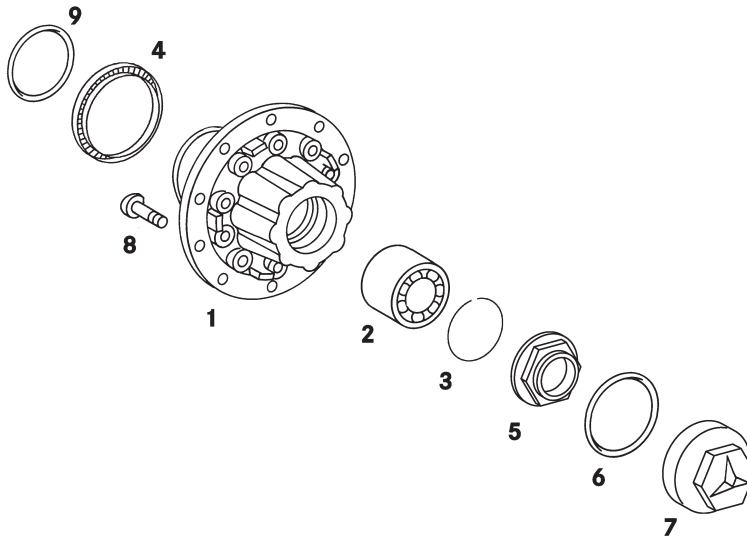
The left hand spindle end is engraved to indicate that it is a left hand threaded axle end nut.



The front face of the left hand nut is marked with a groove on the machine face.

# Axle models TZ5/4 and TZ4/2 (9t/offset 0) with compact bearing

## Parts illustration

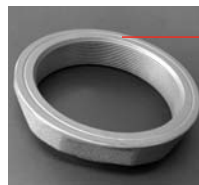


## Parts list

Item no.	Part description	Part no.
1	Wheel hub	A 000 350 09 35
2	Tapered roller bearing unit	} available only as complete set incl. items 3, 6 & 9
3	Retaining clip	
4	Pole wheel - 90 tooth	A 946 994 00 35
5	Hex. Collar Nut M80x1.5	
	with RH thread (right side of vehicle)	A 970 990 00 50
	with LH thread (left side of vehicle)	A 970 990 01 50
6	O-ring	A 027 997 88 48
7	Hub cap	A 946 356 04 20
8	Wheel bolt M22x1.5x80	A 389 401 00 71
9	O-ring (from H240235)	A 029 997 97 48
	Wheel nut (not illustrated)	A 000 401 06 72



The left hand spindle end is engraved to indicate that it is a left hand threaded axle end nut.

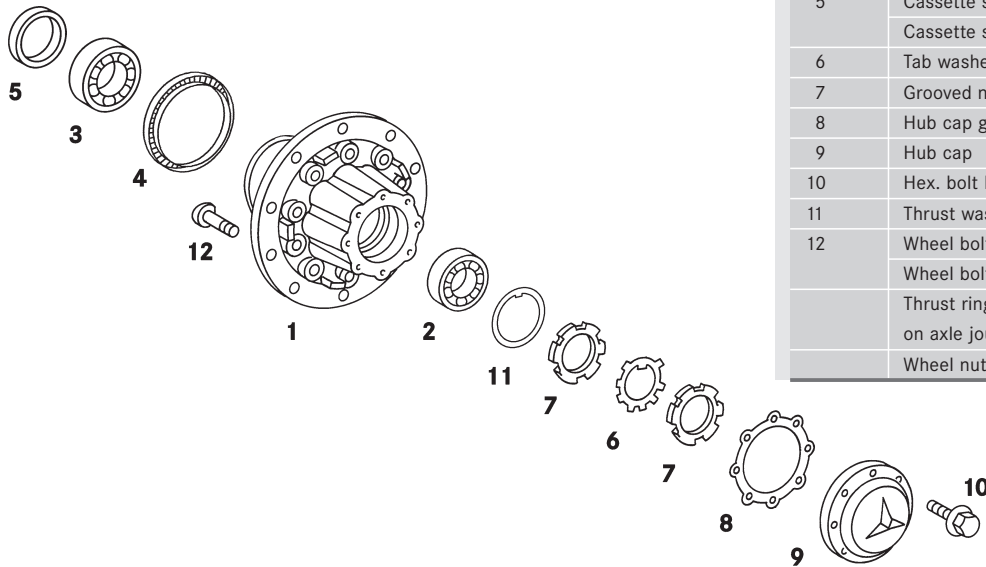


The front face of the left hand nut is marked with a groove on the machine face.

## Wheel bearings

# Twin-wheel axle models TZ5/2 and TZ3/2 (10.5t/offset 0) with conventional bearing

### Parts illustration



### Parts list

Item no.	Part description	Part no.
1	Hub TZ5/2	A 946 356 13 01
	Hub TE3/2	A 946 356 03 01
2	Tapered roller bearing 130mm Ø	A 012 981 40 05
3	Tapered roller bearing 150mm Ø	A 005 981 85 05
4	Pole wheel TZ5/2	A 385 542 03 17
	Pole wheel TZ3/2	A 946 334 01 15
5	Cassette seal TZ5/2	A 021 997 69 47
	Cassette seal TZ3/2	A 013 997 73 46
6	Tab washer	A 976 356 00 73
7	Grooved nut	A 976 356 00 26
8	Hub cap gasket	A 943 334 00 80
9	Hub cap	A 327 356 01 20
10	Hex. bolt M8x16	N 910 105 008 008
11	Thrust washer	A 976 356 00 52
12	Wheel bolt M22x1.5x80	depending on wheel version A 389 401 00 71
	Wheel bolt M22x1.5x110	A 381 401 07 71
	Thrust ring Ø120xØ100x21 on axle journal (not illustrated)	A 675 356 02 15
	Wheel nut (not illustrated)	A 000 401 06 72

# Brake cylinder

Cylinder size	Part no.	Stroke	Manufacturer
<b>Piston cylinder</b>			
16/16" (0715)	A 014 420 61 18	57 mm	WABCO
16/16"	A 017 420 88 18	57 mm	WABCO
16/16"	A 017 420 89 18	57 mm	WABCO
16"	A 006 420 52 24	57 mm	WABCO
16/24"	A 018 420 52 18	57 mm	WABCO
16/24"	A 018 420 53 18	57 mm	WABCO
20"	A 007 420 12 24	62 mm	WABCO
20/24"	A 018 420 55 18	64 mm	WABCO
20/24"	A 018 420 56 18	64 mm	WABCO
22"	A 007 420 13 24	62 mm	WABCO
24"	A 007 420 14 24	62 mm	WABCO
<b>Double-membrane cylinder</b>			
16"	A 008 420 52 24	57 mm	HALDEX
16/24"	A 008 420 50 24	57 mm	HALDEX
16/24"	A 008 420 51 24	57 mm	HALDEX

Item no.	Part description	Part no.
1	Elbow joint	A 000 420 05 66
2	Hex. nut M16x1.5-10	N 910 113 016 001

**Caution:** When replacing brake cylinders, always remove the lower most drain plug from the front chamber housing. Failure to do so may result in chamber or calliper damage!

**N.B.:** Please note the different installation positions for the left and right-hand sides on brake cylinders (16/16", etc.).

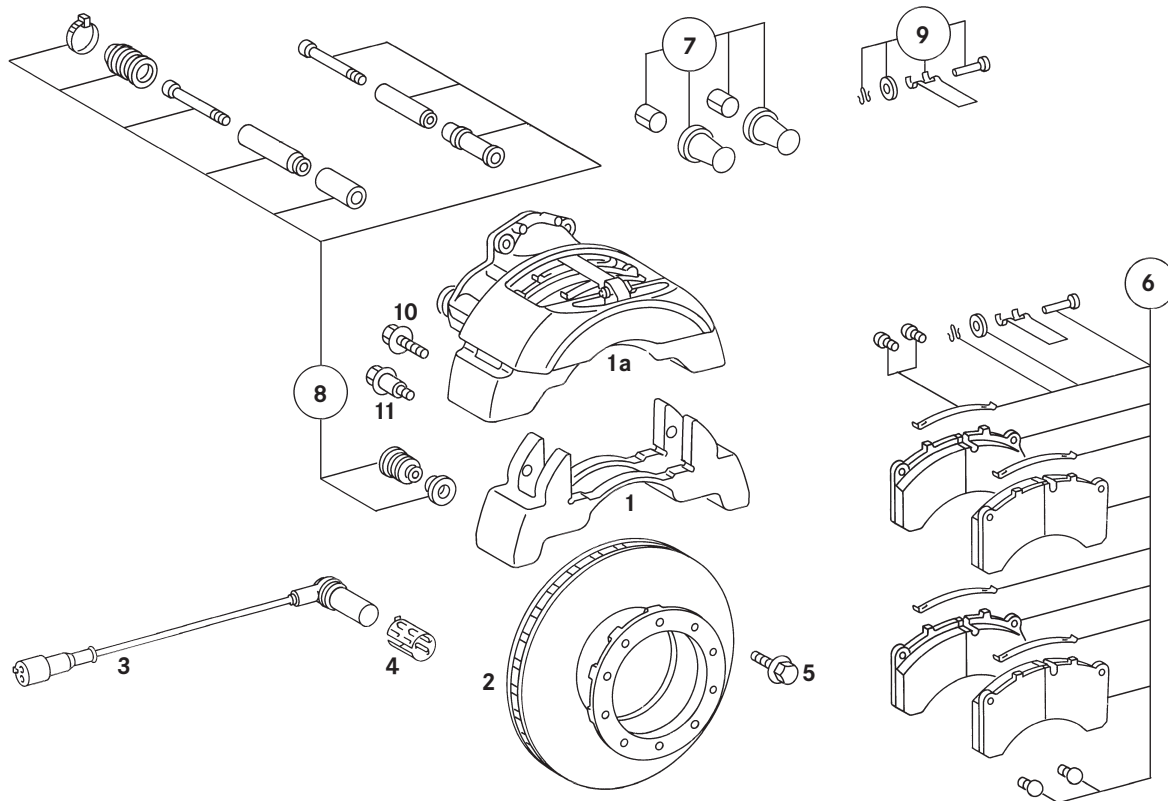


## Brakes

Disc brake 22.5", manufactured by Knorr, SN7

Disc brake 19.5", manufactured by Knorr, SN6

### Parts illustration



**Brake calliper parts list Model SN7 - 22.5"**

Item no.	Part description	Part no.
1	Brake carrier	A 000 421 25 06
1a	Repair solution, left actuating unit	A 002 420 49 83
	Repair solution, right actuating unit	A 002 420 50 83
2	Brake disc	A 942 421 21 12
3	ABS sensor	A 002 542 31 18
4	Bushing for sensor	A 355 542 02 73
5	Hex. bolt TE5 14x1.5x75	A 004 990 59 04
6	Brake lining set (for one axle)	A 002 420 49 20
7	Tappet & Boot set (for pistons)	A 000 420 23 82
8	Slide pin kit and guide pin	A 000 420 34 82
9	Lining bracket set	A 000 420 24 82
10	Bolt M16x1.5x60	N 910 105 016 005
11	Shoulder bolt	A 942 990 01 14
	Bracket for lining wear indicator/ ABS connector (not illustrated)	A 946 328 19 40
	Lining wear sensor kit (not illustrated)	A 946 542 01 18

SN7 and SK7 generation brakes are not interchangeable.

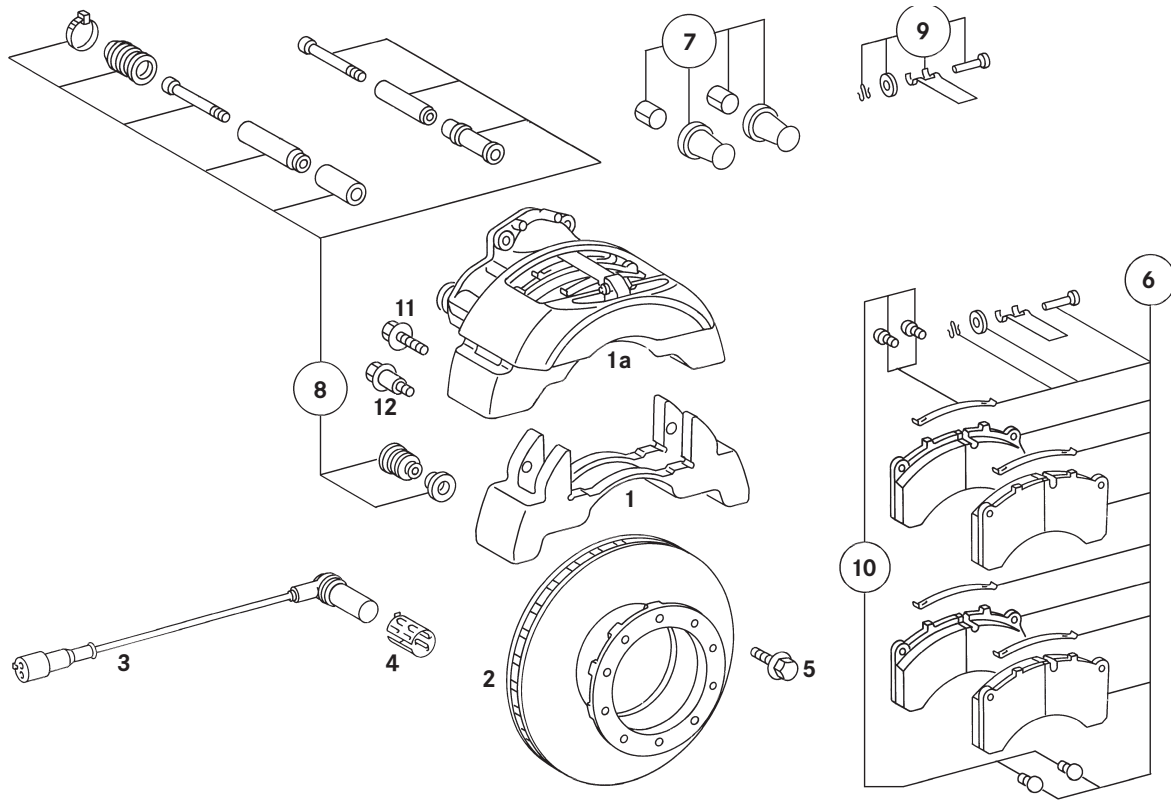
**Brake calliper parts list Model SN6 - 19.5"**

Item no.	Part description	Part no.
1	Brake carrier	A 000 421 20 06
1a	Repair solution, left actuating unit	A 002 420 26 01
	Repair solution, right actuating unit	A 002 420 27 01
2	Brake disc TE4/TL4	A 675 421 00 12
	Brake disc TZ3	A 975 423 06 12
3	ABS sensor	A 002 542 31 18
4	Bushing for sensor	A 355 542 02 73
5	Hex. bolt TE4 14x1.5x70	N 910 105 014 009
	Hex. bolt TZ3 14x1.5x55	N 000 000 000 110
6	Brake lining set (for one axle)	A 002 420 78 20
7	Tappet & Boot set (for pistons)	A 000 420 23 82
8	Slide pin kit and guide pin	A 000 420 46 82
9	Lining bracket set	A 000 420 25 82
10	Bolt M16x1.5x60	N 910 105 016 005
11	Shoulder bolt	A 942 990 01 14
	Bracket for lining wear indicator/ ABS connector (not illustrated)	A 946 328 19 40
	Lining wear sensor kit (not illustrated)	A 946 542 01 18

## Brakes

# Disc brake 22.5", manufactured by Knorr, SK7

### Parts illustration



**Disc brake 22.5", manufactured by Knorr, SK7**

Item no.	Part description	Part no.
1	Brake carrier	A 000 421 39 06
1a	Repair solution, left actuating unit	A 003 420 91 83
	Repair solution, right actuating unit	A 003 420 92 83
2	Brake disc	A 942 421 21 12
3	ABS sensor	A 003 542 31 18
4	Bushing for sensor	A 355 542 02 73
5	Hex. bolt TE5 14x1.5x75	A 004 990 59 04
6	Brake lining set (for one axle)	A 004 420 70 20
7	Tappet & Boot set (for pistons)	A 000 420 49 82
8	Slide pin kit and guide pin	A 000 420 50 82
9	Lining bracket set	A 000 420 25 82
10	Adjuster cap set	A 000 421 32 48
11	Bolt M16x1.5x60	N 910 105 016 005
12	Shoulder bolt	A 942 990 01 14
	Bracket for lining wear indicator/ ABS connector (not illustrated)	A 946 328 19 40
	Lining wear sensor kit (not illustrated)	A 946 542 01 18

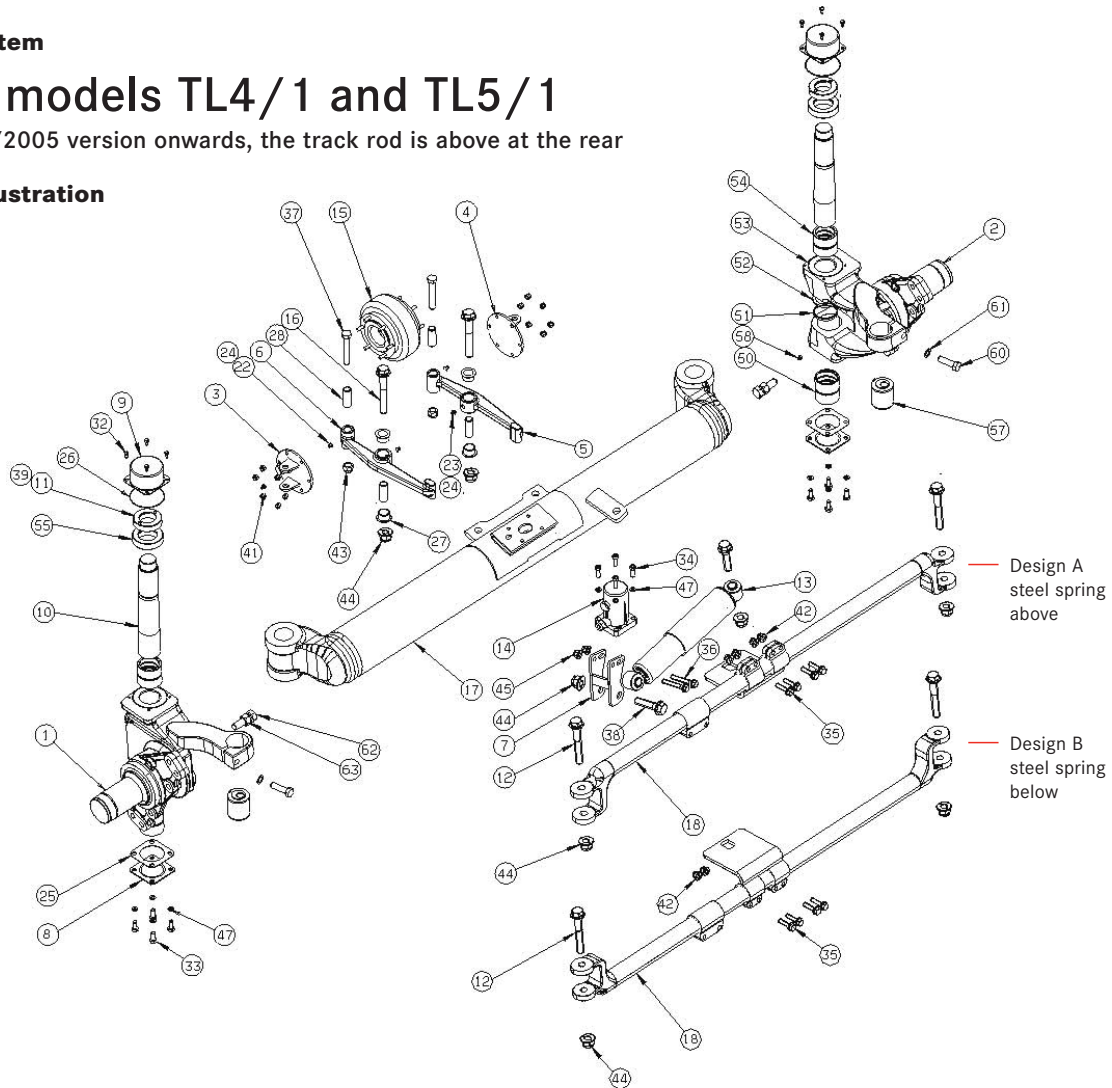
SN7 and SK7 generation brakes are not interchangeable.

## Axle system

# Axle models TL4/1 and TL5/1

From 05/2005 version onwards, the track rod is above at the rear

## Parts illustration



**Parts list for TL4/1 and TL5/1**

Item no.	Part description	Part no.
1	Steering knuckle on LH side of vehicle	A 946 390 08 44
2	Steering knuckle on RH side of vehicle	A 946 390 09 44
3	Plate (pneumatics connection)	A 946 391 00 41
4	Plate	A 946 391 01 41
7	Bracket for vibration damper	A 946 391 07 40
8	Bottom cover	A 946 391 01 20
9	Top cover	A 946 391 02 20
10	Steering knuckle bolts	A 946 393 00 74
11	Clamping nut	A 946 332 00 72
13	Vibration damper	A 946 393 00 47
14	Locking cylinder	A 946 391 00 22
15	Air spring	A 946 393 00 77
17	Axle tube, complete axle housing only	
18	Track rod, design A for wheel tracks 2040	A 946 390 08 07
	Track rod, design A for wheel tracks 2095	A 946 390 09 07
	Track rod, design A for wheel tracks 2140	A 946 390 10 07
	Track rod, design B for wheel tracks 2040	A 946 390 13 07
	Track rod, design B for wheel tracks 2095	A 946 390 14 07
	Track rod, design B for wheel tracks 2140	A 946 390 15 07
22	Lubricating nipple	A 946 997 00 88
23	Lubricating nipple	A 946 997 01 88
32	Hex. bolt M8x18	N 000 933 008 028
33	Hex. bolt M10x25	N 000 933 010 035
34	Cylinder bolt M10x30	N 000 912 010 218
35	Hex. bolt M12x65	N 000 933 012 048
36	Hex. bolt M12x90	N 910 105 012 001
38	Hex. bolt M20x100	N 910 105 020 027
39	Cylinder bolt M10x45	N 000 912 010 221

Item no.	Part description	Part no.
41	Hex. nut M8	N 000 000 003 278
42	Hex. nut M12	N 910 123 012 001
45	Hex. nut M12 with flange	N 913 023 012 002
47	Washer (for M10)	A 946 391 02 76
58	Lubricating nipple	A 946 997 00 88
60	Clamping bolt	N 000 960 016 022
61	Toothed washer	A 946 391 00 76
62	Steering stop bolt	N 304 017 020 001
63	Nut	N 304 032 020 000

Item no.	Description of repair parts	Part no.
<b>A</b>	<b>Adjusting lever</b> includes items nos. 5, 6, 16, 24, 27, 28, 37, 43, 44	A 000 390 01 27
<b>B</b>	<b>Track rod adjustment</b> includes items nos. 12, 44, 57	A 000 330 18 03
<b>C</b>	<b>Axle stub bearing</b> includes items nos. 25, 26, 50, 51, 52, 53, 54, 55	A 000 330 06 20

**Supplementary maintenance work**

Lubrication intervals of 6 months. No load should be placed on axle during lubrication.

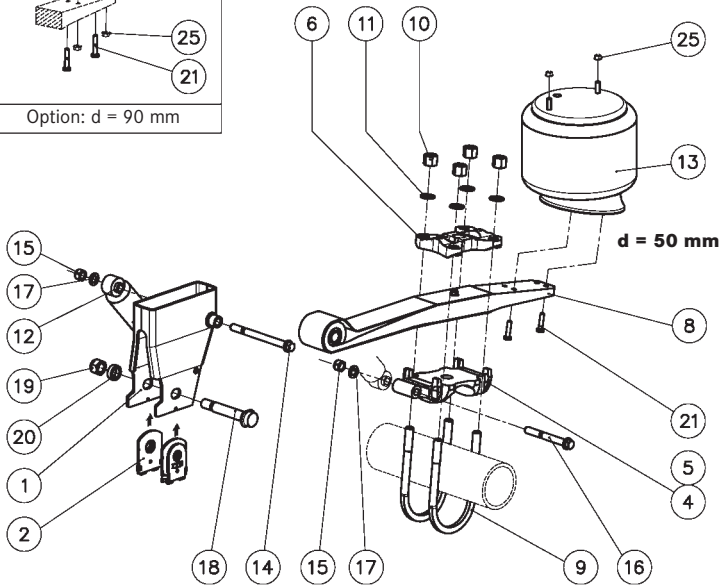
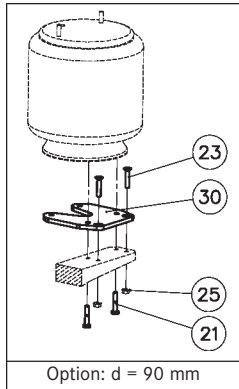
Total toe-in 2-4 mm, adjustable using the eccentric bush (see item 57 in parts illustration).

## Air suspension

# Ride height 450 (ride-height range 450-490)

Order code: 0700

### Parts illustration



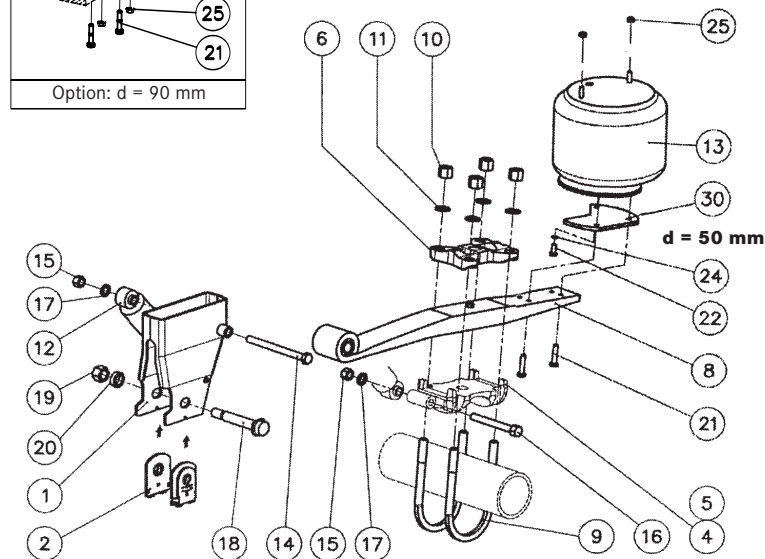
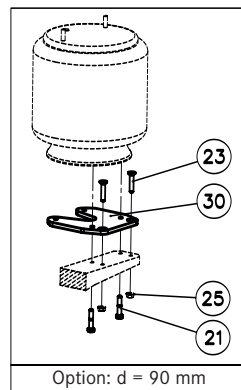
### Parts list

Item no.	Part description	Part no.
1	Hanger bracket H285	A 946 320 25 78
2	Tracking/wear plate for hanger bracket	A 946 323 00 90
4	Spring seat, left overslung linkarm	Not available separately
5	Spring seat, right overslung linkarm	Not available separately
6	U-bolt plate for left and right overslung linkarms	A 946 328 28 35
8	Linkarm 1x54	A 946 350 03 06
9	U-bolt	A 946 325 03 47
10	Nut M24x2	A 946 990 10 50
11	Washer M24	A 946 990 02 40
12	Shock absorber	A 946 326 02 00
13	Air spring Ø 360 L	A 946 328 15 01
14	Bolt M20x2x240	A 946 990 17 01
15	Nut M20x2	A 946 990 00 51
16	Bolt M20x2x175	A 946 990 16 01
17	Washer M20	N 000 000 002 968
18	Pivot bolt M27x186	A 946 990 00 14
19	Pivot nut M27	A 946 990 01 51
20	Pivot washer Ø30/Ø46x14	A 946 990 08 40
25	Nut M12x1.75	A 946 990 02 50
<b>90 mm offset:</b>		
21	Bolt M12x60	N 304 017 012 003
23	Countersunk Allen bolt M12x60	A 946 990 07 01
25	Nut M12x1.75	A 946 990 02 50
30	90mm offset plate for air spring	A 946 328 26 35
<b>50 mm offset:</b>		
21	Bolt M12x50	N 304 017 012 018

# Ride height 390 (ride-height range 390-420)

Order code: 0701

## Parts illustration



## Parts list

Item no.	Part description	Part no.
1	Hanger bracket H230	A 946 320 31 78
2	Tracking/wear plate for hanger bracket	A 946 323 00 90
4	Spring seat, left overslung linkarm	Not available separately
5	Spring seat, right overslung linkarm	Not available separately
6	U-bolt plate for left and right overslung linkarms	A 946 328 28 35
8	Linkarm 1x54	A 946 350 03 06
9	U-bolt	A 946 325 03 47
10	Nut M24x2	A 946 990 10 50
11	Washer M24	A 946 990 02 40
12	Shock absorber	A 946 326 02 00
13	Air spring Ø360 K	A 946 328 19 01
14	Bolt M20x2x240	A 946 990 17 01
15	Nut M20x2	A 946 990 00 51
16	Bolt M20x2x175	A 946 990 16 01
17	Washer M20	N 000 000 002 968
18	Pivot bolt M27x186	A 946 990 00 14
19	Pivot nut M27	A 946 990 01 51
20	Pivot washer Ø30/Ø46x14	A 946 990 08 40
25	Nut M12x1.75	A 946 990 02 50
<b>90 mm offset:</b>		
21	Hex. bolt M12x60	N 304 017 012 003
23	Countersunk Allen bolt M12x60	A 946 990 07 01
25	Nut M12x1.75	A 946 990 02 50
30	90mm offset plate for air spring	A 946 328 26 35
<b>50 mm offset:</b>		
21	Hex. bolt M12x60	N 304 017 012 003
22	Hex. bolt M12x30	A 946 990 01 01
24	Lock washer M1/2"	A 946 990 00 47
30	50mm offset plate for air spring	A 946 328 25 35



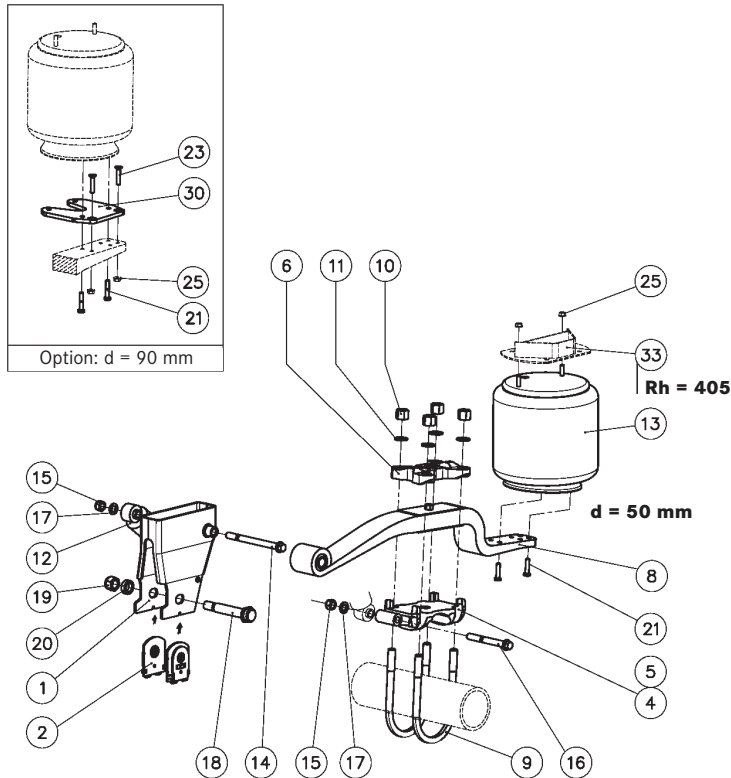
## Air suspension

a. Ride height 355 (ride-height range 325-370)

b. Ride height 405 (ride-height range 375-420)

Order code: 0702

### Parts illustration



### Parts list

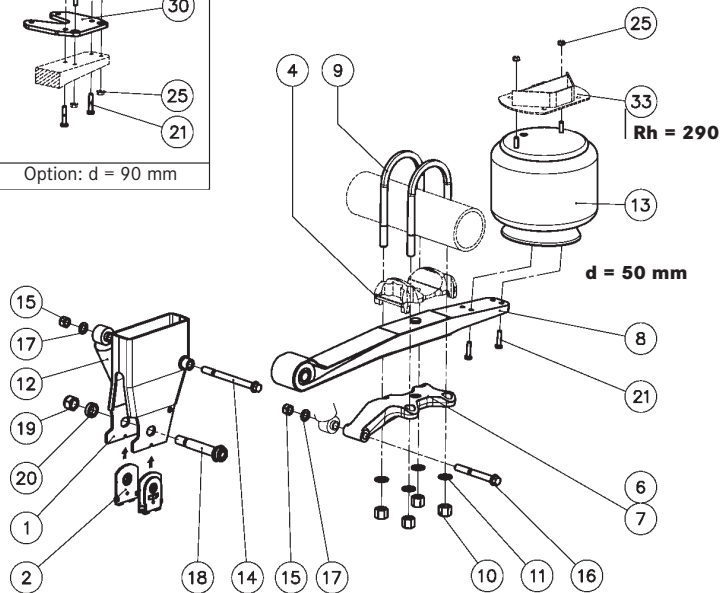
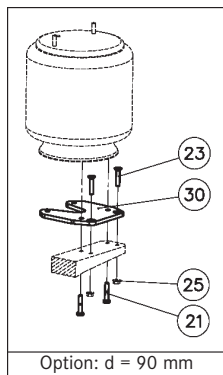
Item no.	Part description	Part no.
1 a.	Hanger bracket H280	A 946 320 33 78
1 b.	Hanger bracket H335	A 946 320 36 78
2	Tracking/wear plate for hanger bracket	A 946 323 00 90
4	Spring seat, left overslung linkarm	Not available separately
5	Spring seat, right overslung linkarm	Not available separately
6	U-bolt plate for left and right overslung linkarms	A 946 328 28 35
8	Linkarm 1x54	A 946 350 13 06
9	U-bolt	A 946 325 03 47
10	Nut M24x2	A 946 990 10 50
11	Washer M24	A 946 990 02 40
12	Shock absorber	A 946 326 03 00
13	Air spring Ø360 L	A 946 328 15 01
14	Bolt M20x2x240	A 946 990 17 01
15	Nut M20x2	A 946 990 00 51
16	Bolt M20x2x175	A 946 990 16 01
17	Washer M20	N 000 000 002 968
18	Pivot bolt M27x186	A 946 990 00 14
19	Pivot nut M27	A 946 990 01 51
20	Pivot washer Ø30/Ø46x14	A 946 990 08 40
25	Nut M12x1.75	A 946 990 02 50
33 b.	Air spring bracket C=50mm	A 946 320 03 35
<b>90 mm offset:</b>		
21	Hex. bolt M12x60	N 304 017 012 003
23	Countersunk Allen bolt M12x60	A 946 990 07 01
25	Nut M12x1.75	A 946 990 02 50
30	90mm offset plate for air spring	A 946 328 26 35
<b>50 mm offset:</b>		
21	Hex. bolt M12x50	N 304 017 012 018

a. Ride height 215 (ride-height range 215-260)

b. Ride height 290 (ride-height range 260-310)

Order code: 0710

### Parts illustration



### Parts list

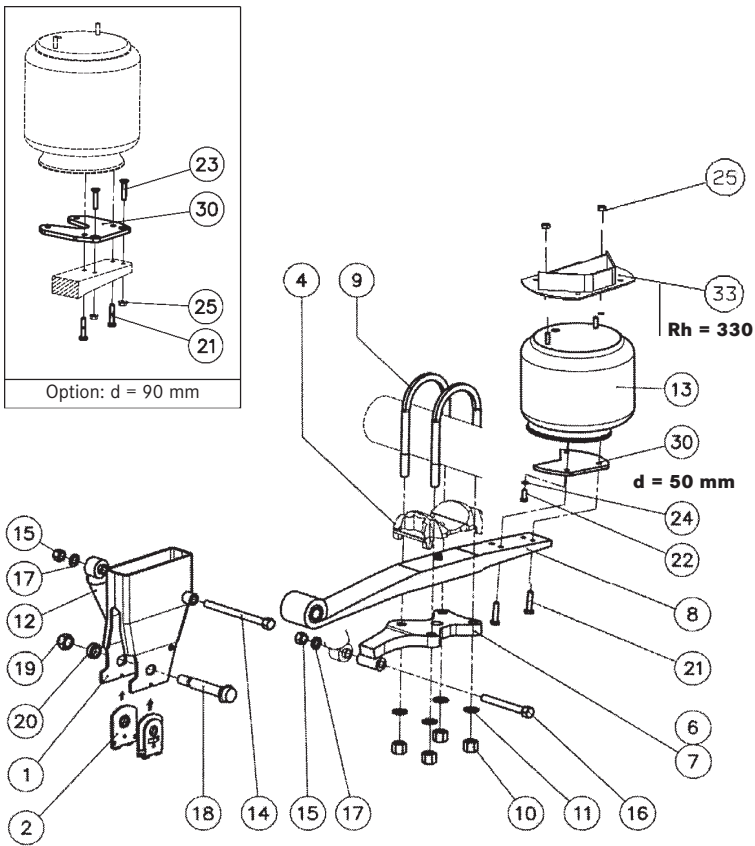
Item no.	Part description	Part no.
1	Hanger bracket H335	A 946 320 27 78
2	Tracking/wear plate for hanger bracket	A 946 323 00 90
4	Spring seat	Not available separately
6	Ext. U-bolt plate for undersl. LH susp. linka.	A 946 328 31 35
7	Ext. U-bolt plate for undersl. RH susp. linka.	A 946 328 32 35
8	Linkarm 1x54	A 946 350 04 06
9	U-bolt	A 946 325 03 47
10	Nut M24x2	A 946 990 10 50
11	Washer M24	A 946 990 02 40
12	Shock absorber	A 946 326 03 00
13	Air spring Ø360 L	A 946 328 15 01
14	Bolt M20x2x240	A 946 990 17 01
15	Nut M20x2	A 946 990 00 51
16	Bolt M20x2x175	A 946 990 16 01
17	Washer M20	N 000 000 002 968
18	Pivot bolt M27x186	A 946 990 00 14
19	Pivot nut M27	A 946 990 01 51
20	Pivot washer Ø30/Ø46x14	A 946 990 08 40
25	Nut M12x1.75	A 946 990 02 50
33 b.	Air spring bracket C=50mm	A 946 320 03 35
<b>90 mm offset:</b>		
21	Hex. bolt M12x60	N 304 017 012 003
23	Countersunk Allen bolt M12x60	A 946 990 07 01
25	Nut M12x1.75	A 946 990 02 50
30	90mm offset plate for air spring	A 946 328 26 35
<b>50 mm offset:</b>		
21	Hex. bolt M12x50	N 304 017 012 018

## Air suspension

# Ride height 330 (ride-height range 310-350)

Order code: 0711

### Parts illustration



### Parts list

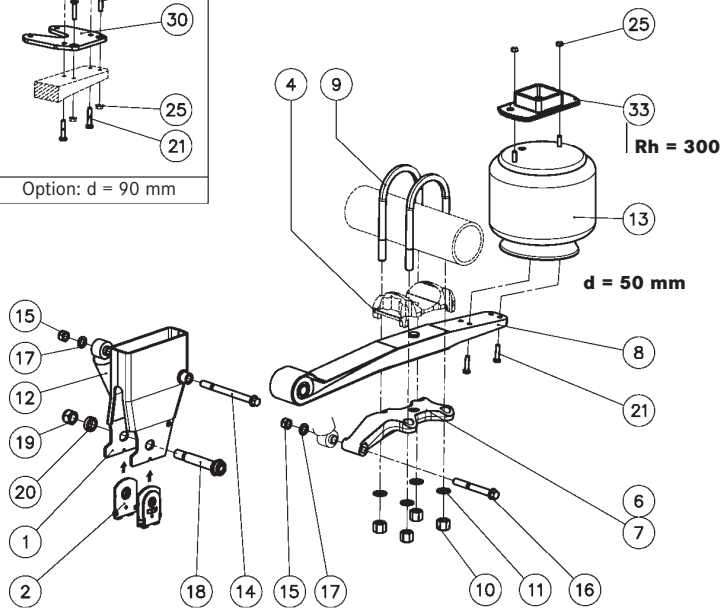
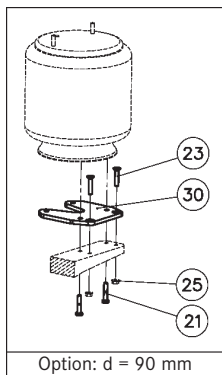
Item no.	Part description	Part no.
1	Hanger bracket H335	A 946 320 27 78
2	Tracking/wear plate for hanger bracket	A 946 323 00 90
4	Spring seat	Not available separately
6	Ext. U-bolt plate for undersl. LH susp. linka.	A 946 328 31 35
7	Ext. U-bolt plate for undersl. RH susp. linka.	A 946 328 32 35
8	Linkarm 1x54	A 946 350 04 06
9	U-bolt	A 946 325 03 47
10	U-bolt nut M24x2	A 946 990 10 50
11	Washer M24	A 946 990 02 40
12	Shock absorber	A 946 326 03 00
13	Air spring Ø360 K	A 946 328 19 01
14	Bolt M20x2x240	A 946 990 17 01
15	Nut M20x2	A 946 990 00 51
16	Bolt M20x2x175	A 946 990 16 01
17	Washer M20	N 000 000 002 968
18	Pivot bolt M27x186	A 946 990 00 14
19	Pivot nut, M27	A 946 990 01 51
20	Pivot washer Ø30/Ø46x14	A 946 990 08 40
25	Nut M12x1.75	A 946 990 02 50
33	Air spring bracket C=150mm	A 946 320 08 35
<b>90 mm offset:</b>		
21	Hex. bolt M12x60	N 304 017 012 003
23	Countersunk Allen bolt M12x60	A 946 990 07 01
25	Nut M12x1.75	A 946 990 02 50
30	90mm offset plate for air spring	A 946 328 26 35
<b>50 mm offset:</b>		
21	Hex. bolt M12x60	N 304 017 012 003
22	Hex. bolt M12x30	A 946 990 01 01
24	Lock washer M1/2"	A 946 990 00 47
30	50mm offset plate for air spring	A 946 328 25 35

a. Ride height 250 (ride-height range 210-260)

b. Ride height 300 (ride-height range 245-300)

Order code: 0715

Parts illustration



Parts list

Item no.	Part description	Part no.
1 a.	Hanger bracket H255	A 946 320 64 78
1 b.	Hanger bracket H280	A 946 320 33 78
2	Tracking/wear plate for hanger bracket	A 946 323 00 90
4	Spring seat	Not available separately
6	Ext. U-bolt plate for undersl. LH susp. linka.	A 946 328 31 35
7	Ext. U-bolt plate for undersl. RH susp. linka.	A 946 328 32 35
8	Linkarm 1x54	A 946 350 14 06
9	U-bolt	A 946 325 03 47
10	U-bolt nut M24x2	A 946 990 10 50
11	Washer M24	A 946 990 02 40
12	Shock absorber	A 946 326 08 00
13	Air spring Ø 360 L	A 946 328 15 01
14	Bolt M20x2x240	A 946 990 17 01
15	Nut M20x2	A 946 990 00 51
16	Bolt M20x2x175	A 946 990 16 01
17	Washer M20	N 000 000 002 968
18	Pivot bolt M27x186	A 946 990 00 14
19	Pivot nut M27	A 946 990 01 51
20	Pivot washer Ø30/Ø46x14	A 946 990 08 40
25	Nut M12x1.75	A 946 990 02 50
33 b.	Air spring bracket C=50mm	A 946 320 03 35
<b>90 mm offset:</b>		
21	Hex. bolt M12x60	N 304 017 012 003
23	Countersunk Allen bolt M12x60	A 946 990 07 01
25	Nut M12x1.75	A 946 990 02 50
30	90mm offset plate for air spring	A 946 328 26 35
<b>50 mm offset:</b>		
21	Hex. bolt M12x50	N 304 017 012 018

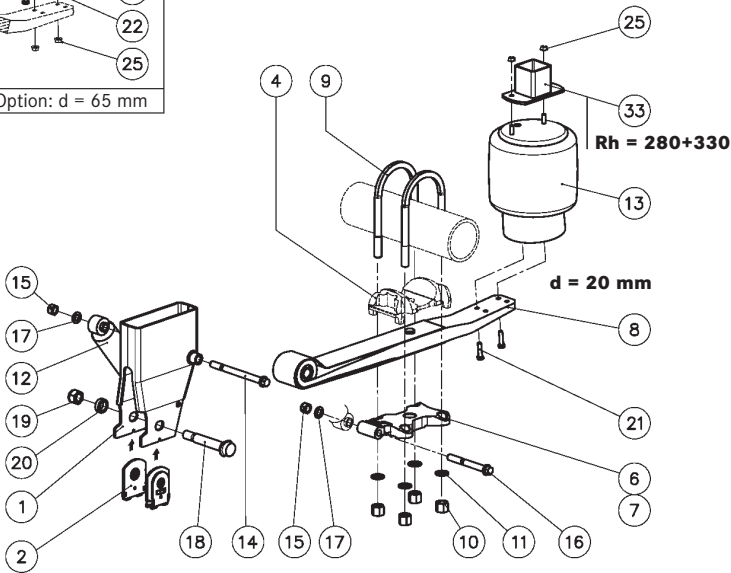
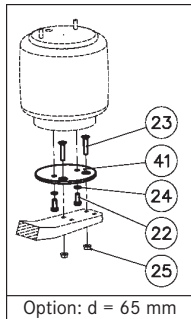
## Air suspension

a. Ride height 280 (ride-height range 280-305)

b. Ride height 330 (ride-height range 305-355)

Order code: 0720

### Parts illustration



### Parts list

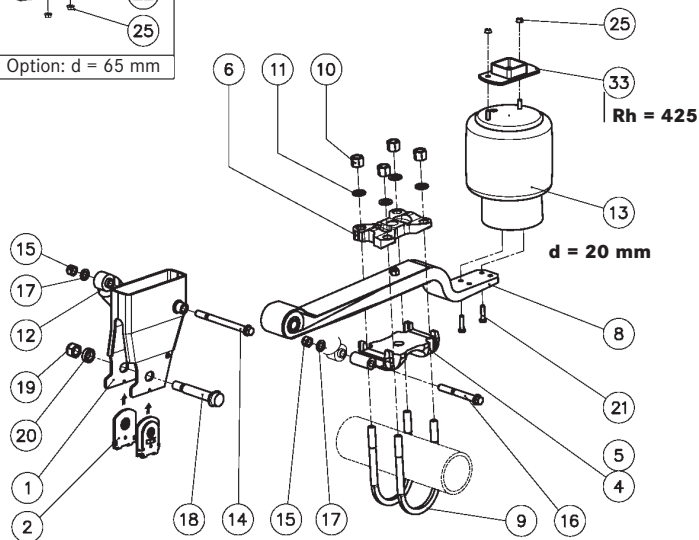
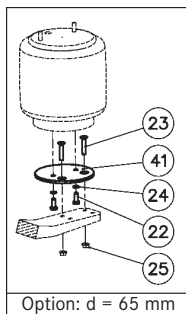
Item no.	Part description	Part no.
1	Hanger bracket H335	A 946 320 27 78
2	Tracking/wear plate for hanger bracket	A 946 323 00 90
4	Spring seat	Not available separately
6	Ext. U-bolt plate for oversl. LH susp. linka.	A 946 328 29 35
7	Ext. U-bolt plate for undersl. RH susp. linka.	A 946 328 30 35
8	Linkarm 1x48	A 946 350 02 06
9	U-bolt	A 946 325 03 47
10	Nut M24x2	A 946 990 10 50
11	Washer M24	A 946 990 02 40
12	Shock absorber	A 946 326 03 00
13	Air spring Ø 300	A 946 328 14 01
14	Bolt M20x2x240	A 946 990 17 01
15	Nut M20x2	A 946 990 00 51
16	Bolt M20x2x175	A 946 990 16 01
17	Washer M20	N 000 000 002 968
18	Pivot bolt M27x186	A 946 990 00 14
19	Pivot nut M27	A 946 990 01 51
20	Pivot washer Ø30/Ø46x14	A 946 990 08 40
25	Nut M12x1.75	A 946 990 02 50
33 a.	Air spring bracket C=50mm	A 946 320 03 35
33 b.	Air spring bracket C=100mm	A 946 320 06 35
<b>20 mm offset (standard):</b>		
21	Hex. bolt M12x50	N 304 017 012 018
<b>65 mm offset:</b>		
22	Hex. bolt M12x30	A 946 990 01 01
23	Countersunk Allen bolt M12x60	A 946 990 07 01
24	Lock washer M1/2"	A 946 990 00 47
25	Nut M12x1.75	A 946 990 02 50
41	65mm offset plate	A 946 328 27 35

a. Ride height 375 (ride-height range 350-400)

b. Ride height 425 (ride-height range 400-450)

Order code: 0730

### Parts illustration



### Parts list

Item no.	Part description	Part no.
1 a.	Hanger bracket H230	A 946 320 31 78
1 b.	Hanger bracket H280	A 946 320 33 78
2	Tracking/wear plate for hanger bracket	A 946 323 00 90
4	Spring seat for oversl. LH susp. linka.	Not available separately
5	Spring seat for oversl. RH susp. linka.	Not available separately
6	U-bolt plate for oversl. LH/RH susp. linka.	A 946 328 28 35
8	Linkarm 1x48mm	A 946 350 01 06
9	U-bolt	A 946 325 03 47
10	Nut M24x2	A 946 990 10 50
11	Washer M24	A 946 990 02 40
12	Shock absorber	A 946 326 03 00
13	Air spring Ø300	A 946 328 14 01
14	Bolt M20x2x240	A 946 990 17 01
15	Nut M20x2	A 946 990 00 51
16	Bolt M20x2x175	A 946 990 16 01
17	Washer M20	N 000 000 002 968
18	Pivot bolt M27x186	A 946 990 00 14
19	Pivot nut M27	A 946 990 01 51
20	Pivot washer Ø 30 / Ø 46 x 14	A 946 990 08 40
25	Nut M12x1.75	A 946 990 02 50
33 b.	Air spring bracket C=50mm	A 946 320 03 35
<b>20 mm offset (standard):</b>		
21	Hex. bolt M12x50	N 304 017 012 018
<b>65 mm offset:</b>		
22	Hex. bolt M12 x 30	A 946 990 01 01
23	Countersunk Allen bolt M12x60	A 946 990 07 01
24	Lock washer M1/2"	A 946 990 00 47
25	Nut M12x1.75	A 946 990 02 50
41	65mm offset plate	A 946 328 27 35

## Air suspension

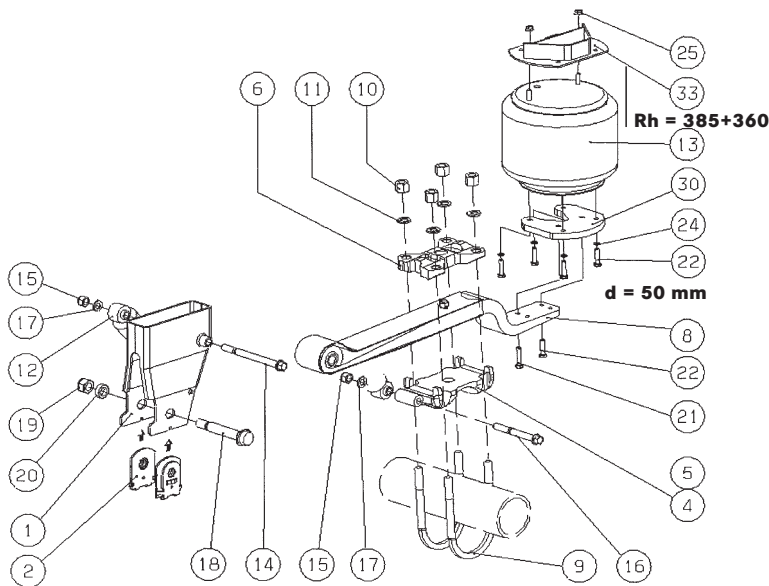
a. Ride height 385 (ride-height range 385-450)

b. Ride height 335 (ride-height range 335-400)

c. Ride height 360 (ride-height range 360-410)

Order code: 0731

### Parts illustration



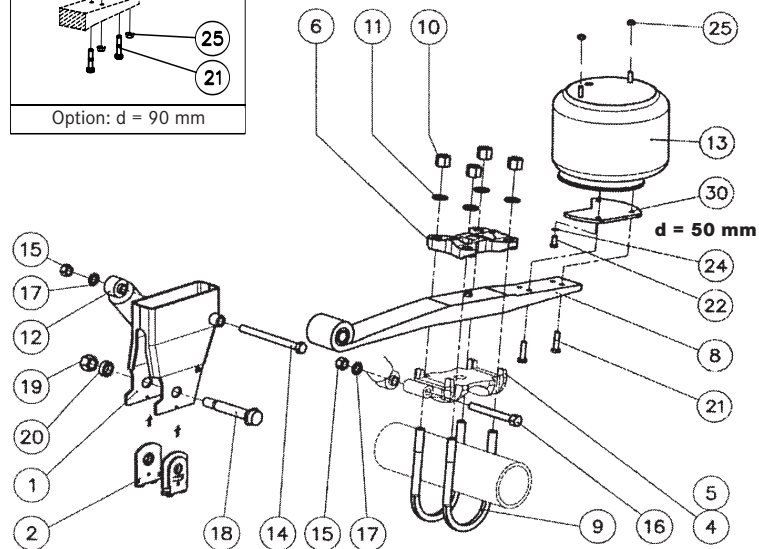
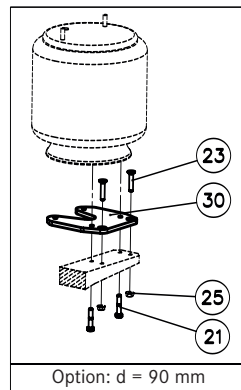
### Parts list

Item no.	Part description	Part no.
1 a.	Hanger bracket H280	A 946 320 33 78
1 b.	Hanger bracket H230	A 946 320 31 78
1 c.	Hanger bracket H230	A 946 320 31 78
2	Tracking/wear plate for hanger bracket	A 946 323 00 90
4	Spring seat for left overslung linkarm	Not available separately
5	Spring seat for right overslung linkarm	Not available separately
6	U-bolt for left and right overslung linkarms	A 946 328 28 35
8	Linkarm 1x48mm	A 946 350 01 06
9	U-bolt	A 946 325 03 47
10	Nut M24x2	A 946 990 10 50
11	Washer M24	A 946 990 02 40
12	Shock absorber	A 946 326 03 00
13	Air spring Ø360 K	A 946 328 19 01
14	Bolt M20x2x240	A 946 990 17 01
15	Nut M20x2	A 946 990 00 51
16	Bolt M20x2x175	A 946 990 16 01
17	Washer M20	N 000 000 002 968
18	Pivot bolt M27x186	A 946 990 00 14
19	Pivot nut M27	A 946 990 01 51
20	Pivot washer Ø30/Ø46x14	A 946 990 08 40
21	Hex. bolt M12x50	N 304 017 012 018
22	Hex. bolt M12x30	A 946 990 01 01
24	Lock washer M1/2"	A 946 990 00 47
25	Nut M12x1.75	A 946 990 02 50
30	50mm offset plate for air spring	A 946 328 25 35
33 a.	Air spring bracket C=50mm	A 946 320 03 35
33 c.	Air spring bracket C=50mm	A 946 320 03 35

# Ride height 410 (ride-height range 410-450)

Order code: 0780

## Parts illustration



## Parts list

Item no.	Part description	Part no.
1	Hanger bracket H285	A 946 320 25 78
2	Tracking/wear plate for hanger bracket	A 946 323 00 90
4	Spring seat for left overslung linkarm	Not available separately
5	Spring seat for right overslung linkarm	Not available separately
6	U-bolt plate for oversl. LH/RH linka.	A 946 328 28 35
8	Linkarm 1x54	A 946 350 03 06
9	U-bolt	A 946 325 03 47
10	Nut M24x2	A 946 990 10 50
11	Washer M24	A 946 990 02 40
12	Shock absorber	A 946 326 03 00
13	Air spring Ø360 K	A 946 328 19 01
14	Bolt M20x2x240	A 946 990 17 01
15	Nut M20x2	A 946 990 00 51
16	Bolt M20x2x175	A 946 990 16 01
17	Washer M20	N 000 000 002 968
18	Pivot bolt M27x186	A 946 990 00 14
19	Pivot nut M27	A 946 990 01 51
20	Pivot washer Ø30/Ø46x14	A 946 990 08 40
25	Nut M12x1.75	A 946 990 02 50
<b>90 mm offset:</b>		
21	Hex. bolt M12x60	N 304 017 012 003
23	Countersunk Allen bolt M12x60	A 946 990 07 01
25	Nut M12x1.75	A 946 990 02 50
30	90mm offset plate for air spring	A 946 328 26 35
<b>50 mm offset:</b>		
21	Hex. bolt M12x60	N 304 017 012 003
22	Hex. bolt M12x30	A 946 990 01 01
24	Lock washer M1/2"	A 946 990 00 47
30	50mm offset plate for air spring	A 946 328 25 35



## Air suspension

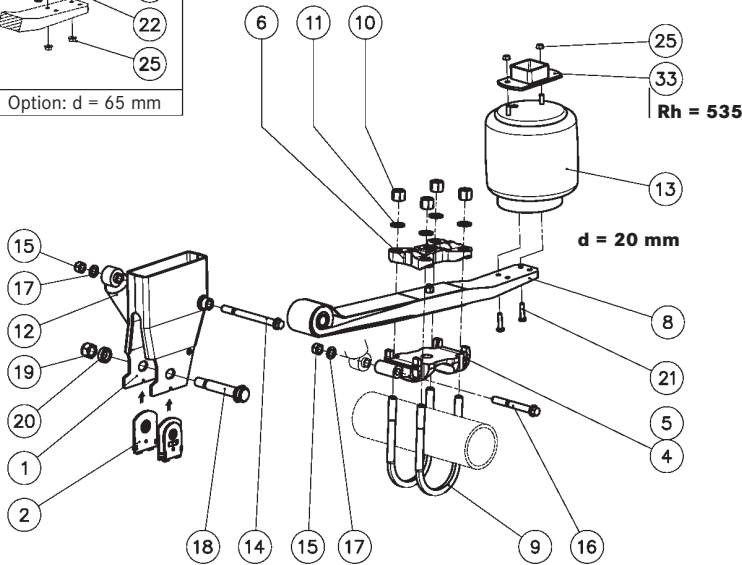
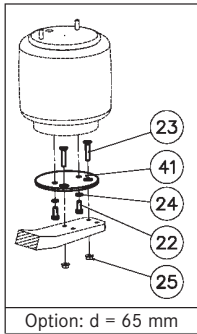
a. Ride height 485 (ride-height range 450-520)

b. Ride height 535 (ride-height range 500-570)

### Parts list

Order code: 0795

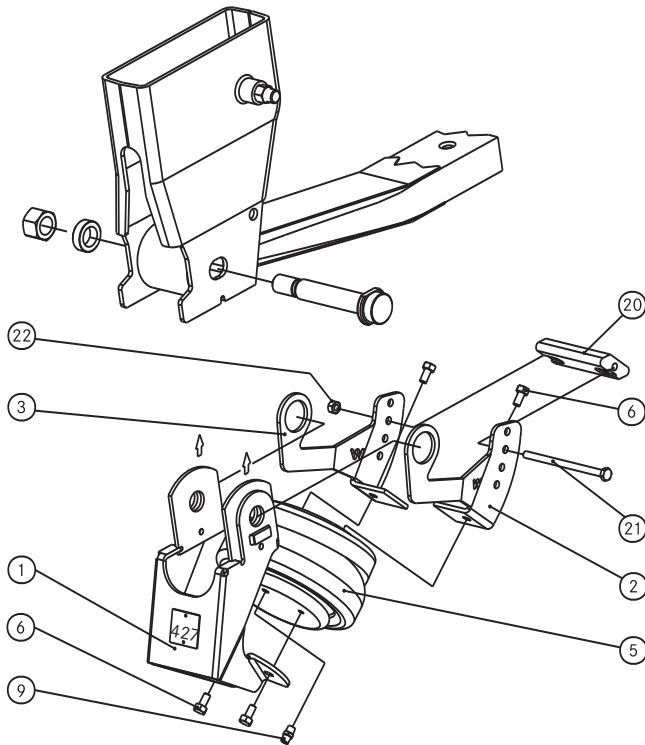
### Parts illustration



Item no.	Part description	Part no.
1 a.	Hanger bracket H285	A 946 320 25 78
1 b.	Hanger bracket H335	A 946 320 27 78
2	Tracking/wear plate for hanger bracket	A 946 323 00 90
4	Spring seat	Not available separately
6	U-bolt plate for oversl. LH/RH linka.	A 946 328 28 35
8	Linkarm 1x48mm	A 946 350 11 06
9	U-bolt	A 946 325 03 47
10	Nut M24x2	A 946 990 10 50
11	Washer M24	A 946 990 02 40
12	Shock absorber	A 946 326 03 00
13	Air spring Ø 300	A 946 328 14 01
14	Bolt M20x2x240	A 946 990 17 01
15	Nut M20x2	A 946 990 00 51
16	Bolt M20x2x175	A 946 990 16 01
17	Washer M20	N 000 000 002 968
18	Pivot bolt M27x186	A 946 990 00 14
19	Pivot nut M27	A 946 990 01 51
20	Pivot washer Ø30/Ø46x14	A 946 990 08 40
25	Nut M12x1.75	A 946 990 02 50
33 b.	Air spring bracket C=50mm	A 946 320 03 35
<b>20 mm offset:</b>		
21	Hex. bolt M12x50	N 304 017 012 018
<b>65 mm offset:</b>		
22	Hex. bolt M12x30	A 946 990 01 01
23	Countersunk Allen bolt M12x60	A 946 990 07 01
24	Lock washer M1/2"	A 946 990 00 47
25	Nut M12x1.75	A 946 990 02 50
41	65mm offset plate	A 946 328 27 35

# Dual-side lift, “bolt on” version

## Parts illustration



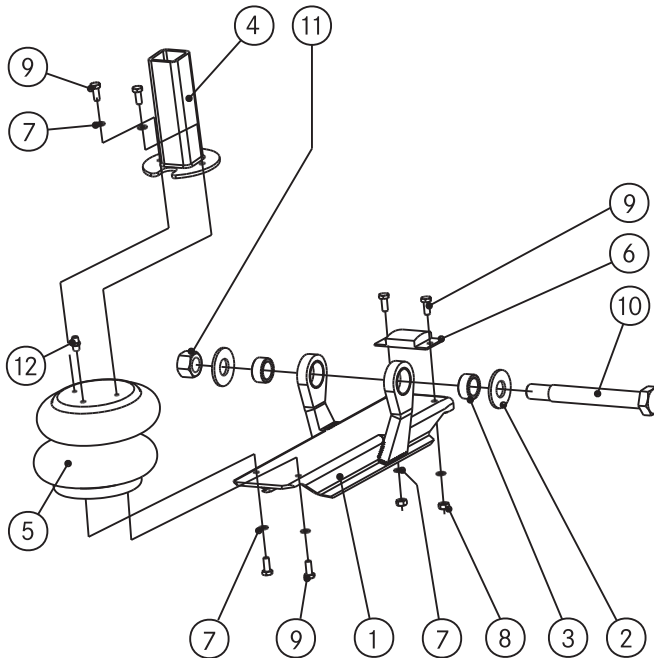
## Parts list

Item no.	Part description	Part no.
1	Air spring support cradle	A 946 328 20 40
2	Air spring fixing bracket top, left	A 946 328 21 40
3	Air spring fixing bracket top, right	A 946 328 22 40
5	Lift air spring	A 946 328 16 01
6	Hex. bolt M10x20	A 946 990 08 01
9	Adaptor	A 946 328 02 64
20	Rubber stop	A 946 325 00 44
21	Hex. bolt M10x160	A 946 990 02 01
22	Nut M10	A 946 990 09 50

## Air suspension

# Dual-side lift, “pivoted” version

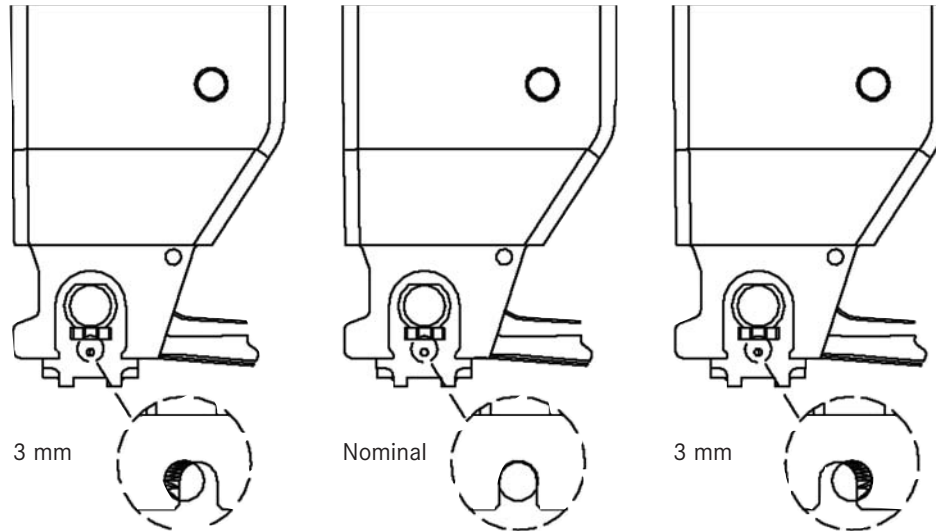
### Parts illustration



### Parts list

Item no.	Part description	Part no.
1	Axle lift arm	A 946 350 07 06
2	Washer Ø31/70	A 946 328 01 50
3	Washer Ø31/45	A 946 328 02 50
4	Air spring bracket (lift air spring)	A 946 328 69 35
5	Lift air spring	A 946 328 16 01
6	Rubber stop	A 946 325 01 44
7	Lock washer 10	A 946 990 01 47
8	Nut M10x1.5	A 946 990 09 50
9	Hex. bolt M27x240	A 946 990 05 01
10	Pivot bolt M27x240	A 946 328 00 74
11	Pivot nut M27	A 946 990 01 51
12	Adaptor	A 946 328 02 64

# Axle tracking



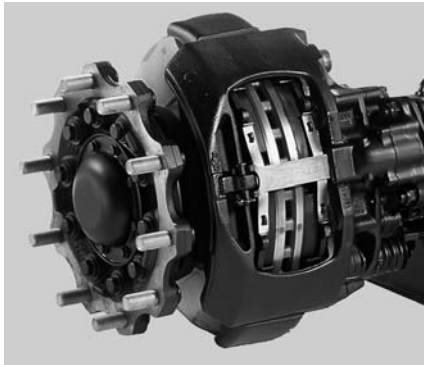
An oval hole in the hanger brackets means the pivot bolt has an adjustment range of 6 mm.

**Caution:** when repainting components, observe the manufacturer's guidelines and mask the appropriate bolt connection areas.

**Observe the tightening torques specified on pages 36 and 37.**

# Tightening torques

## Conventional bearing system



Wheel nut  
Brake disc on hub  
Brake cylinder mounting  
Brake calliper mounting

**Initial torque** Axle nut (hex. collar nut M80x1.5) 240 Nm whilst turning the turn wheel hub through one rotation

**Bearing play** Set to 0.02-0.04 mm

**TZ5/2**  
**TZ3/2** { Tighten counter-nut to 380 Nm, and secure with tab washer

**Hub cap** Bolted, M8 43 Nm

## Compact bearing



M22 x 1.5 600 Nm  
M14 x 1.5 190 Nm  
M16 x 1.5 180 Nm  
M16 x 1.5 275 Nm

**Initial torque** Axle nut (hex. collar nut M80x1.5) 700 Nm

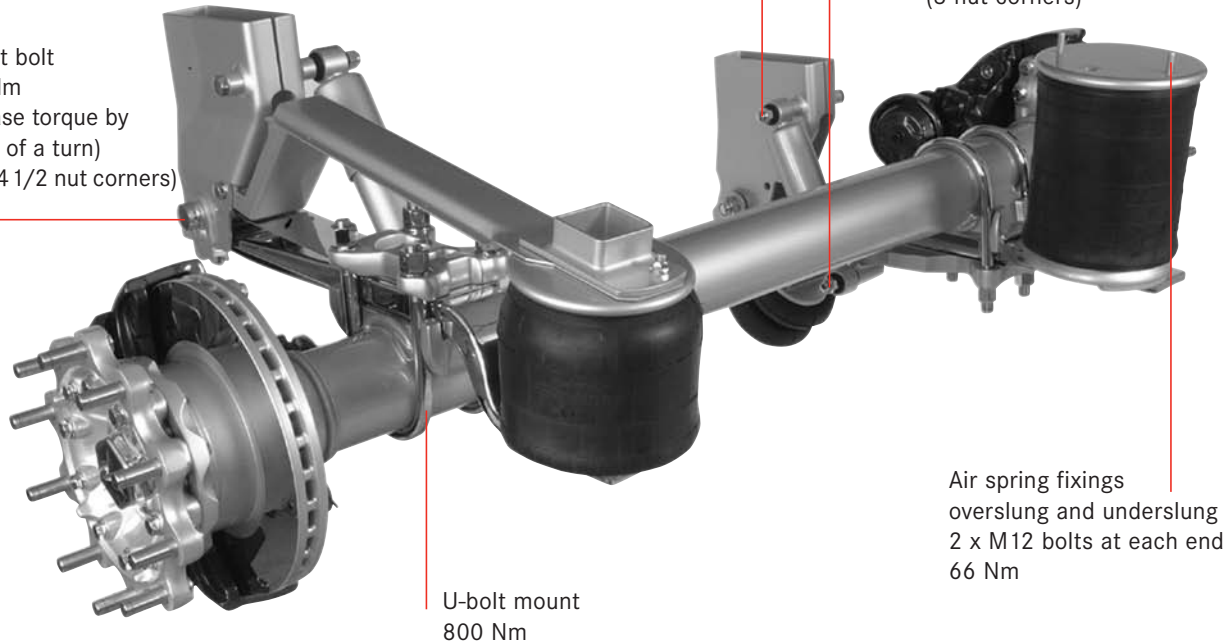
**Bearing play** Bearing play not adjustable

**Hub cap** Press-fit hub cap

# Tightening torques

Hanger bracket pivot bolt  
Initial torque: 250 Nm  
Final torque: Increase torque by  
a further 270° (3/4 of a turn)  
rotation of the nut (4 1/2 nut corners)

Shock absorber mounting  
Initial torque: 200 Nm  
Final torque: Increase torque by a further  
180° rotation of the nut  
(3 nut corners)



U-bolt mount  
800 Nm

Air spring fixings  
overslung and underslung  
2 x M12 bolts at each end  
66 Nm

Tolerance ±3%

# Inspections and maintenance

## **Before starting every trip**

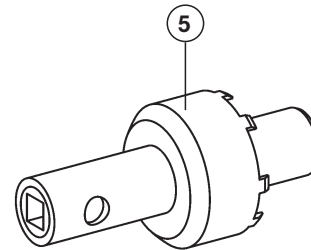
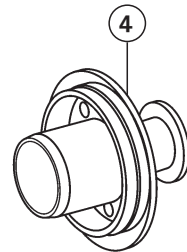
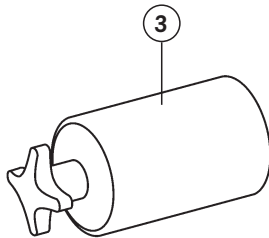
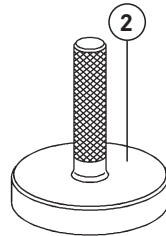
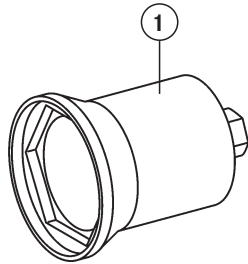
- Ensure that the compressed-air reservoirs for the braking system and air suspension are up to full operating pressure.
- Check air springs for creasing or signs of damage.

## **After the first two weeks, then at least once a year**

- Perform a visual inspection of the bolted connections around the pivot bolts, shock-absorber mountings and the U-bolt nuts, paying particular attention to signs of paint cracks on the periphery of the connection and signs of rust.  
Cracks and fissures in the area adjacent to the connections is a sign of movement at the mounting. You should respond by retightening the connection to the specified torque.

# Tools

## Parts illustration



## Parts list

Item no.	Part description	Part no.
1	Socket for hexagonal axle end nut M80x1.5	W 749 589 00 09 00
2	Drift for fitting oil seal insertion tool	W 389 589 00 15 00
3	Assembly aid for compact bearing hub	W 749 589 00 14 00
4	Drift for fitting ABS pole wheel	W 749 589 00 15 00
5	Claw spanner attachment for slotted round nut on TZ5/TZ3	W 749 589 02 07 00



## Maintenance work

<input type="checkbox"/>	Bolt connections checked and retightened to specified tightening torque	
<input type="checkbox"/>	Wheel bearing play checked	
<input type="checkbox"/>	Wheel bearings regreased and new seal fitted	To be performed only on axle systems with conventional bearings
<input type="checkbox"/>	Wheel bearings replaced	
<input type="checkbox"/>	Wheel bearing play adjusted	
<input type="checkbox"/>	Chassis parts checked for wear, leakage and damage	
<input type="checkbox"/>	Brake lining wear checked	
<input type="checkbox"/>	Brake system checked for leakage	
<input type="checkbox"/>	Braking effect of service and parking brakes checked	

Brake lining check	Remaining brake lining thickness	Lining replacement
First axle, left	<input type="text"/> mm	<input type="checkbox"/>
First axle, right	<input type="text"/> mm	<input type="checkbox"/>
Second axle, left	<input type="text"/> mm	<input type="checkbox"/>
Second axle, right	<input type="text"/> mm	<input type="checkbox"/>
Third axle, left	<input type="text"/> mm	<input type="checkbox"/>
Third axle, right	<input type="text"/> mm	<input type="checkbox"/>

Brand of wheel bearing grease (conventional bearing)	<input type="text"/>
Mileage	<input type="text"/>
Repair order no.	<input type="text"/>
Date	<input type="text"/>
Signature	<input type="text"/>

Authorised workshop stamp

<input type="checkbox"/>	Bolt connections checked and retightened to specified tightening torque	
<input type="checkbox"/>	Wheel bearing play checked	
<input type="checkbox"/>	Wheel bearings regreased and new seal fitted	To be performed only on axle systems with conventional bearings
<input type="checkbox"/>	Wheel bearings replaced	
<input type="checkbox"/>	Wheel bearing play adjusted	
<input type="checkbox"/>	Chassis parts checked for wear, leakage and damage	
<input type="checkbox"/>	Brake lining wear checked	
<input type="checkbox"/>	Brake system checked for leakage	
<input type="checkbox"/>	Braking effect of service and parking brakes checked	

Brake lining check	Remaining brake lining thickness	Lining replacement
First axle, left	<input type="text"/> mm	<input type="checkbox"/>
First axle, right	<input type="text"/> mm	<input type="checkbox"/>
Second axle, left	<input type="text"/> mm	<input type="checkbox"/>
Second axle, right	<input type="text"/> mm	<input type="checkbox"/>
Third axle, left	<input type="text"/> mm	<input type="checkbox"/>
Third axle, right	<input type="text"/> mm	<input type="checkbox"/>

Brand of wheel bearing grease (conventional bearing)	<input type="text"/>
Mileage	<input type="text"/>
Repair order no.	<input type="text"/>
Date	<input type="text"/>
Signature	<input type="text"/>

Authorised workshop stamp

## Maintenance work

<input type="checkbox"/>	Bolt connections checked and retightened to specified tightening torque	
<input type="checkbox"/>	Wheel bearing play checked	
<input type="checkbox"/>	Wheel bearings regreased and new seal fitted	To be performed only on axle systems with conventional bearings
<input type="checkbox"/>	Wheel bearings replaced	
<input type="checkbox"/>	Wheel bearing play adjusted	
<input type="checkbox"/>	Chassis parts checked for wear, leakage and damage	
<input type="checkbox"/>	Brake lining wear checked	
<input type="checkbox"/>	Brake system checked for leakage	
<input type="checkbox"/>	Braking effect of service and parking brakes checked	

Brake lining check	Remaining brake lining thickness	Lining replacement
First axle, left	<input type="text"/> mm	<input type="checkbox"/>
First axle, right	<input type="text"/> mm	<input type="checkbox"/>
Second axle, left	<input type="text"/> mm	<input type="checkbox"/>
Second axle, right	<input type="text"/> mm	<input type="checkbox"/>
Third axle, left	<input type="text"/> mm	<input type="checkbox"/>
Third axle, right	<input type="text"/> mm	<input type="checkbox"/>

Brand of wheel bearing grease (conventional bearing)	<input type="text"/>
Mileage	<input type="text"/>
Repair order no.	<input type="text"/>
Date	<input type="text"/>
Signature	<input type="text"/>

Authorised workshop stamp

<input type="checkbox"/>	Bolt connections checked and retightened to specified tightening torque	
<input type="checkbox"/>	Wheel bearing play checked	
<input type="checkbox"/>	Wheel bearings regreased and new seal fitted	To be performed only on axle systems with conventional bearings
<input type="checkbox"/>	Wheel bearings replaced	
<input type="checkbox"/>	Wheel bearing play adjusted	
<input type="checkbox"/>	Chassis parts checked for wear, leakage and damage	
<input type="checkbox"/>	Brake lining wear checked	
<input type="checkbox"/>	Brake system checked for leakage	
<input type="checkbox"/>	Braking effect of service and parking brakes checked	

Brake lining check	Remaining brake lining thickness	Lining replacement
First axle, left	<input type="text"/> mm	<input type="checkbox"/>
First axle, right	<input type="text"/> mm	<input type="checkbox"/>
Second axle, left	<input type="text"/> mm	<input type="checkbox"/>
Second axle, right	<input type="text"/> mm	<input type="checkbox"/>
Third axle, left	<input type="text"/> mm	<input type="checkbox"/>
Third axle, right	<input type="text"/> mm	<input type="checkbox"/>

Brand of wheel bearing grease (conventional bearing)	<input type="text"/>
Mileage	<input type="text"/>
Repair order no.	<input type="text"/>
Date	<input type="text"/>
Signature	<input type="text"/>

Authorised workshop stamp

## Maintenance work

<input type="checkbox"/>	Bolt connections checked and retightened to specified tightening torque	
<input type="checkbox"/>	Wheel bearing play checked	
<input type="checkbox"/>	Wheel bearings regreased and new seal fitted	To be performed only on axle systems with conventional bearings
<input type="checkbox"/>	Wheel bearings replaced	
<input type="checkbox"/>	Wheel bearing play adjusted	
<input type="checkbox"/>	Chassis parts checked for wear, leakage and damage	
<input type="checkbox"/>	Brake lining wear checked	
<input type="checkbox"/>	Brake system checked for leakage	
<input type="checkbox"/>	Braking effect of service and parking brakes checked	

Brake lining check	Remaining brake lining thickness	Lining replacement
First axle, left	<input type="text"/> mm	<input type="checkbox"/>
First axle, right	<input type="text"/> mm	<input type="checkbox"/>
Second axle, left	<input type="text"/> mm	<input type="checkbox"/>
Second axle, right	<input type="text"/> mm	<input type="checkbox"/>
Third axle, left	<input type="text"/> mm	<input type="checkbox"/>
Third axle, right	<input type="text"/> mm	<input type="checkbox"/>

Brand of wheel bearing grease (conventional bearing)	<input type="text"/>
Mileage	<input type="text"/>
Repair order no.	<input type="text"/>
Date	<input type="text"/>
Signature	<input type="text"/>

Authorised workshop stamp

<input type="checkbox"/>	Bolt connections checked and retightened to specified tightening torque	
<input type="checkbox"/>	Wheel bearing play checked	
<input type="checkbox"/>	Wheel bearings regreased and new seal fitted	To be performed only on axle systems with conventional bearings
<input type="checkbox"/>	Wheel bearings replaced	conventional bearings
<input type="checkbox"/>	Wheel bearing play adjusted	
<input type="checkbox"/>	Chassis parts checked for wear, leakage and damage	
<input type="checkbox"/>	Brake lining wear checked	
<input type="checkbox"/>	Brake system checked for leakage	
<input type="checkbox"/>	Braking effect of service and parking brakes checked	

Brake lining check	Remaining brake lining thickness	Lining replacement
First axle, left	<input type="text"/> mm	<input type="checkbox"/>
First axle, right	<input type="text"/> mm	<input type="checkbox"/>
Second axle, left	<input type="text"/> mm	<input type="checkbox"/>
Second axle, right	<input type="text"/> mm	<input type="checkbox"/>
Third axle, left	<input type="text"/> mm	<input type="checkbox"/>
Third axle, right	<input type="text"/> mm	<input type="checkbox"/>

Brand of wheel bearing grease (conventional bearing)	<input type="text"/>
Mileage	<input type="text"/>
Repair order no.	<input type="text"/>
Date	<input type="text"/>
Signature	<input type="text"/>

Authorised workshop stamp

## Maintenance work

<input type="checkbox"/>	Bolt connections checked and retightened to specified tightening torque	
<input type="checkbox"/>	Wheel bearing play checked	
<input type="checkbox"/>	Wheel bearings regreased and new seal fitted	To be performed only on axle systems with conventional bearings
<input type="checkbox"/>	Wheel bearings replaced	
<input type="checkbox"/>	Wheel bearing play adjusted	
<input type="checkbox"/>	Chassis parts checked for wear, leakage and damage	
<input type="checkbox"/>	Brake lining wear checked	
<input type="checkbox"/>	Brake system checked for leakage	
<input type="checkbox"/>	Braking effect of service and parking brakes checked	

Brake lining check	Remaining brake lining thickness	Lining replacement
First axle, left	<input type="text"/> mm	<input type="checkbox"/>
First axle, right	<input type="text"/> mm	<input type="checkbox"/>
Second axle, left	<input type="text"/> mm	<input type="checkbox"/>
Second axle, right	<input type="text"/> mm	<input type="checkbox"/>
Third axle, left	<input type="text"/> mm	<input type="checkbox"/>
Third axle, right	<input type="text"/> mm	<input type="checkbox"/>

Brand of wheel bearing grease (conventional bearing)	<input type="text"/>
Mileage	<input type="text"/>
Repair order no.	<input type="text"/>
Date	<input type="text"/>
Signature	<input type="text"/>

Authorised workshop stamp

Please note: modifications may have been made to the products since this brochure went to print. The information in this brochure is to be regarded as approximate. The illustrations may contain accessories and items of optional equipment which are not part of standard specification. This brochure may also contain models and services which are not offered in certain countries. Please consult your DaimlerChrysler dealer for current details.